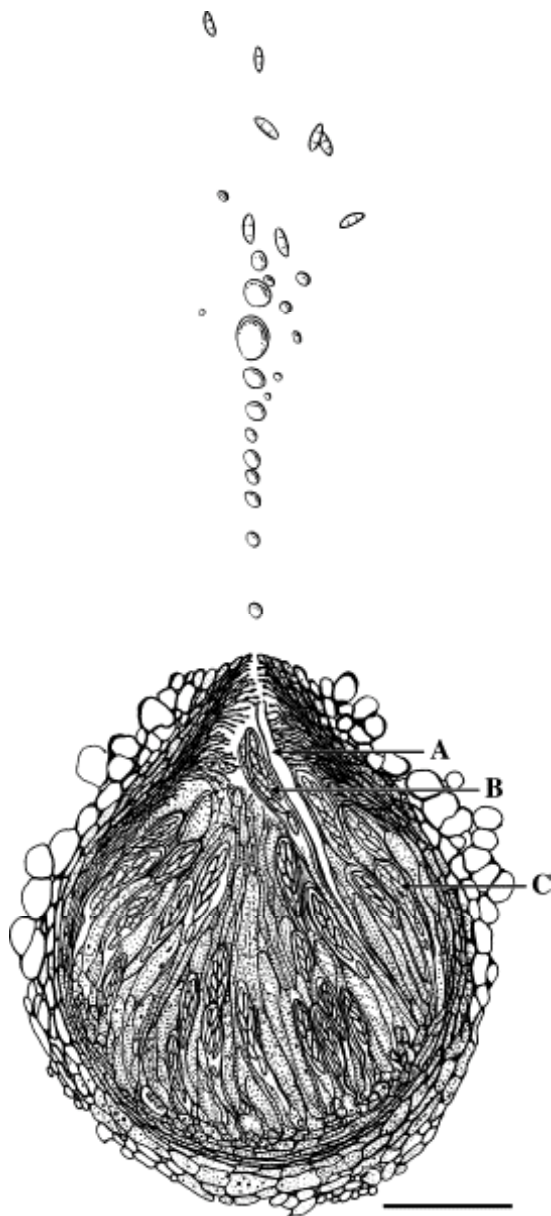
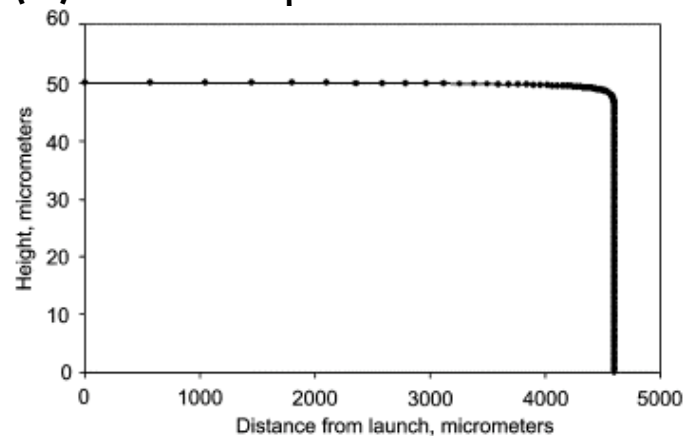


BIOBALLISTICS



A mature perithecium of *Gibberella zeae*, with an ascus retracting following ejection of spores and fluid (A); a mature ascus extending up to the end of the canal to discharge (B) and a mature unextended ascus (C). Bar = 50 μm .



The spore trajectory is shown at 20 μs intervals. The initial speed is about 34.5 m s^{-1} . A launch speed that fast translates into a g-force of about 870,000. Ejection of the spores is driven by a pressure of about 1.54 MPa.

Trail F, I Gaffoor, S Vogel (2005) Ejection mechanics and trajectory of the ascospores of *Gibberella zeae* (anamorph *Fusarium graminearum*). *Fungal Genetics and Biology* 42(6):528–533.