



# **Update on Academic Planning**

## **Report to Senate**

**SHEILA EMBLETON**  
**VICE-PRESIDENT ACADEMIC**

April 26, 2001

# BUDGET PLANNING

- Budget planning must respond to academic planning/priorities
- Academic decision-making must take account of financial context

# CONTEXT FOR PLANNING - EXTERNAL

- Demographic changes/double cohort
- Shifts in students' interests
- Increasing demand for TEL
- Competition for faculty
- Private universities and college degrees
- Accountability
- Fees
- Trends towards targeted funding

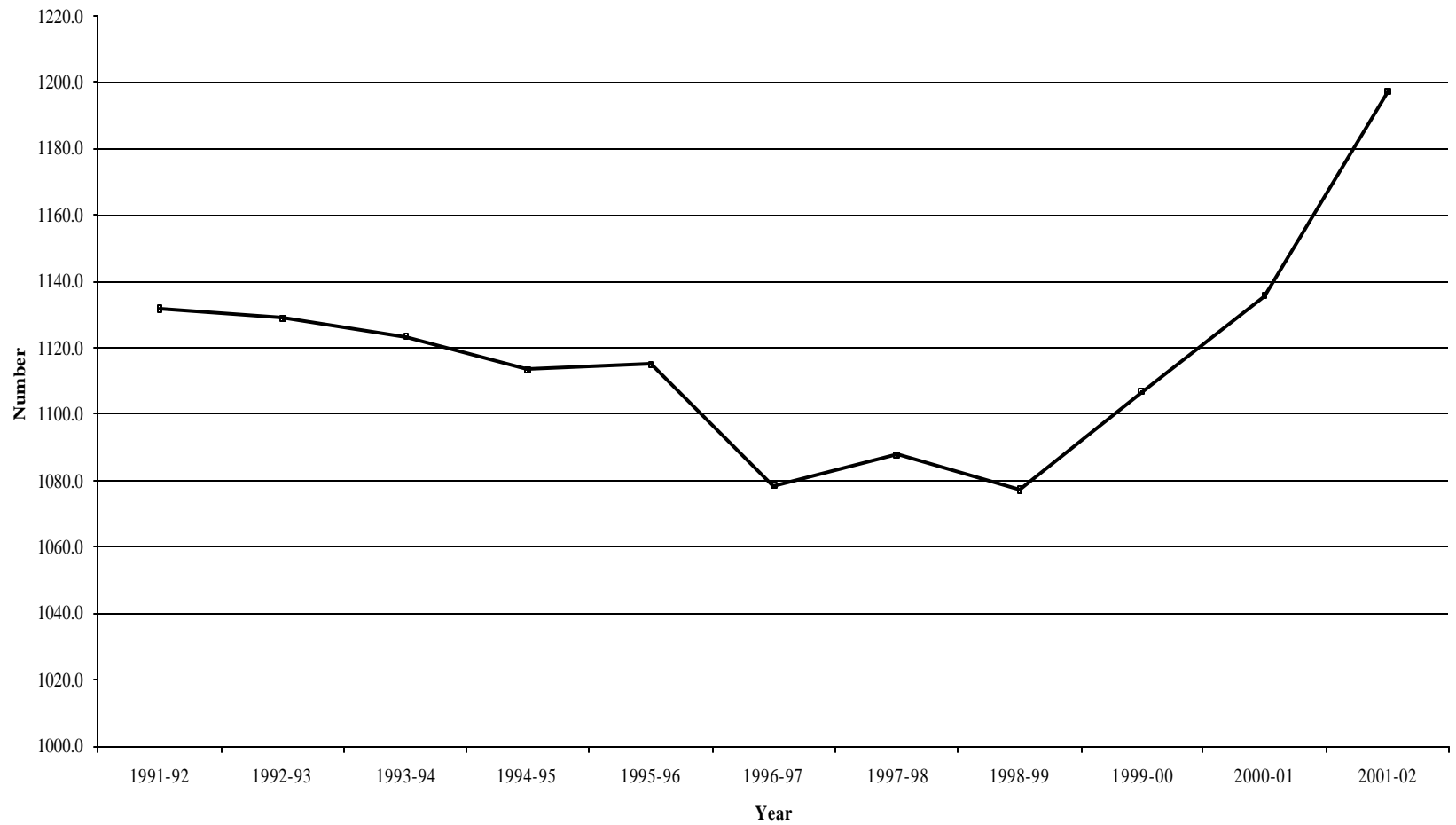
# CONTEXT FOR PLANNING – INTERNAL: STRATEGIC OBJECTIVES

- liberal arts
- professional and applied studies
- building on strengths
- engineering and applied science
- interdisciplinary health studies
- high quality graduate education
- leading research university
- internationalization
- technology-enhanced learning

# APPOINTMENTS PLANNING

CATEGORY OF APPOINTMENTS	Made	Pending	TOTAL
Fair Funding	37	32.4	<b>69.4</b>
ATOP (Access to Opportunities)	9	3	<b>12</b>
CRCs	6 (Accepted) 6 (Recommended)	20	<b>32</b>
Endowed/Externally Funded	24	3	<b>27</b>
<b>TOTAL</b>	<b>82</b>	<b>58.4</b>	<b>140.4</b>

**Total Tenure Stream Faculty**



# STRATEGIC DEVELOPMENT

- Program development and implementation proceeding in accordance with:
  - the University's strategic plans (UAP)
  - specific planning frameworks for two Faculties: Atkinson and Glendon

# STRATEGIC DEVELOPMENT

- Implementation of Atkinson “revisioning” to focus on professional studies in the liberal arts context
  - BA in Business Economics
  - Expansion of Collaborative Nursing Program to include Durham College
  - Masters in Human Resources Management
  - Development of curriculum and faculty complement for new School of Health Policy and Management
  - Development of Honours BSW to be offered in daytime\*
  - Decision taken not to affiliate with CMCC

\* pending Senate approval



# STRATEGIC DEVELOPMENT

- Implementation of Planning Framework for Glendon College:
  - Bilingual Certificate in Public Administration and Public Policy
  - Education program to return to Glendon site in September

# STRATEGIC DEVELOPMENT

- Business:
  - Schulich joint Executive MBA with Kellogg School of Management

# STRATEGIC DEVELOPMENT

- Health
  - PhD in Kinesiology and Health Sciences \*

\* pending Senate approval

# STRATEGIC DEVELOPMENT

- International Initiatives:
  - Certificate in Teaching English to Speakers of Other Languages
  - Interdisciplinary program in International Development Studies \*
  - Interdisciplinary program in South Asian Studies \*
  - Certificate of Proficiency in Chinese \*
  - Funding to support teaching and research initiatives to advance internationalization

\* pending Senate approval

# STRATEGIC DEVELOPMENT

- Certificates and Diplomas:
  - Certificate in digital media
  - Professional certificate in digital design
  - Graduate diploma in Early Childhood Education
  - Graduate Diplomas in Jewish Studies