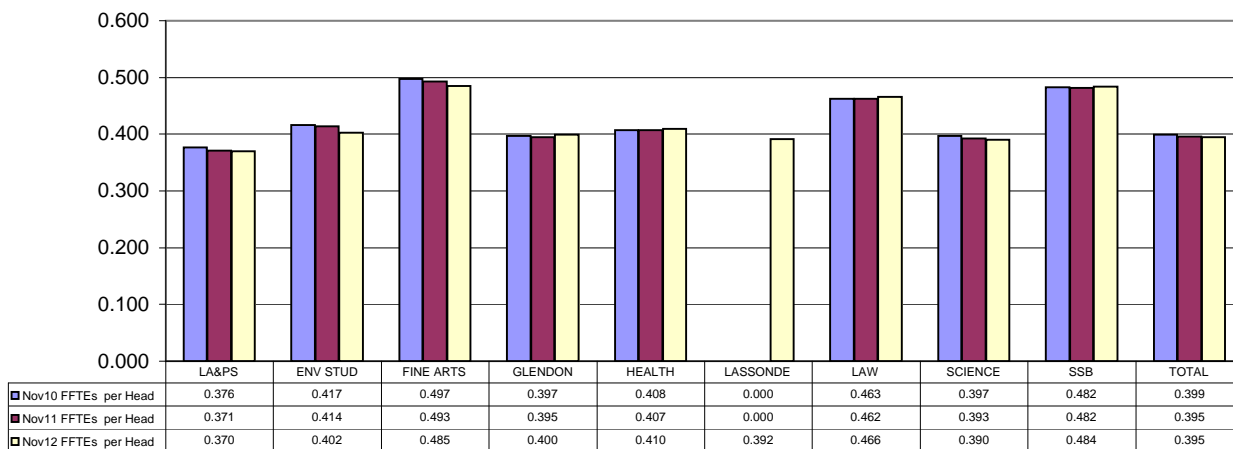


## YORK UNIVERSITY - UNIVERSITÉ

### Average Course Load of Eligible Undergrads on November 1st

Faculty	Nov 1/10					Nov 1/11					Nov 1/12				
	HEADS	FFTES	BIUS	Nov10 FFTEs per Head	Nov10 BIUs per FFTE	HEADS	FFTES	BIUS	Nov11 FFTEs per Head	Nov11 BIUs per FFTE	HEADS	FFTES	BIUS	Nov12 FFTEs per Head	Nov12 BIUs per FFTE
LA&PS	22,850	8601.5	11239.9	0.376	1.307	22,723	8437.1	11004.5	0.371	1.304	22,375	8275.0	10761.7	0.370	1.301
ENV STUD	868	361.7	641.9	0.417	1.775	816	337.5	602.9	0.414	1.786	776	312.3	557.7	0.402	1.786
FINE ARTS	2,534	1260.5	2033.1	0.497	1.613	2,516	1239.4	2008.6	0.493	1.621	2,521	1222.9	1979.6	0.485	1.619
GLENDON	2,383	946.8	1244.2	0.397	1.314	2,404	948.5	1255.9	0.395	1.324	2,377	949.9	1257.1	0.400	1.323
HEALTH	9,352	3812.8	5957.3	0.408	1.562	9,570	3899.7	6066.8	0.407	1.556	9,617	3939.5	6164.2	0.410	1.565
LASSONDE	0	0.0	0.0	#DIV/0!	#DIV/0!	0	0.0	0.0	#DIV/0!	#DIV/0!	801	313.6	503.9	0.392	1.607
LAW	853	394.6	593.1	0.463	1.503	858	396.8	596.4	0.462	1.503	902	419.9	636.7	0.466	1.516
SCIENCE	3,697	1467.7	2181.0	0.397	1.486	3,724	1462.8	2240.7	0.393	1.532	3,056	1192.1	1779.7	0.390	1.493
SSB	1,479	713.5	1070.3	0.482	1.500	1,471	708.7	1063.1	0.482	1.500	1,522	736.3	1107.0	0.484	1.503
<b>TOTAL</b>	<b>44,016</b>	<b>17559.1</b>	<b>24960.8</b>	<b>0.399</b>	<b>1.422</b>	<b>44,082</b>	<b>17430.3</b>	<b>24838.8</b>	<b>0.395</b>	<b>1.425</b>	<b>43,947</b>	<b>17361.5</b>	<b>24747.6</b>	<b>0.395</b>	<b>1.425</b>

Eligible Undergraduate FFTEs per Head on November 1st



Eligible Undergraduate BIUs per FFTE on November 1st

