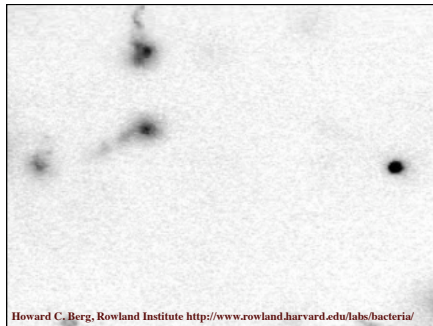
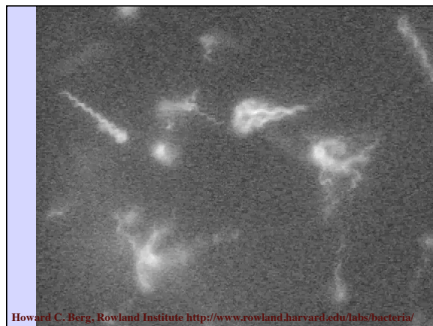


Tethering the flagella of the bacteria to a surface gives a good indication of the rotation. Not only rotational frequency, but, in the presence of media of various viscosities, the torque of the flagellar motors.

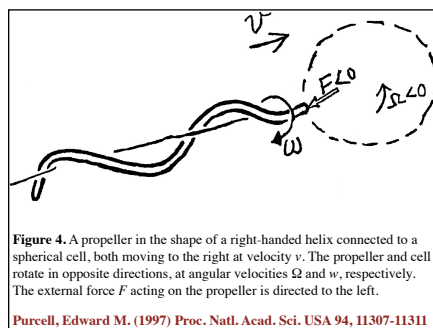
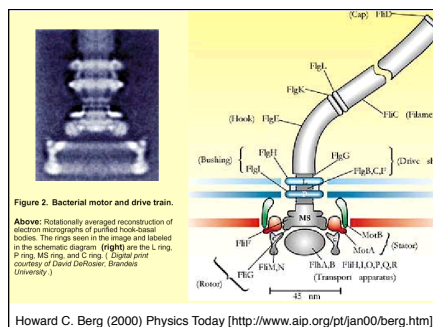
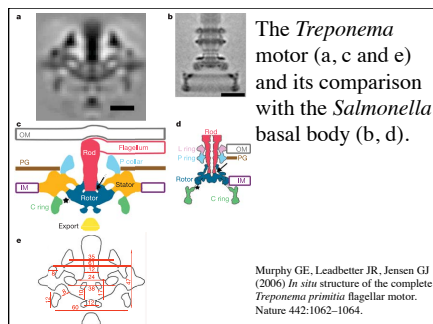
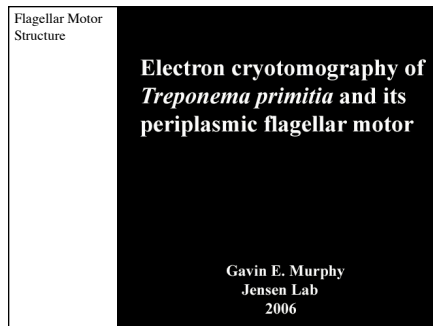
Howard C. Berg, Rowland Institute <http://www.rowland.harvard.edu/labs/bacteria/>



Howard C. Berg, Rowland Institute <http://www.rowland.harvard.edu/labs/bacteria/>



Howard C. Berg, Rowland Institute <http://www.rowland.harvard.edu/labs/bacteria/>



Bacterial Motility

The turning of the flagellar motor causes the flagellar filaments to form a helical screw, which 'corkscrews' the bacteria through the medium

