

40 lines

Nitella translucens

Stem with alternate clusters of crystals of carbonate of lime

150 lines

Stem of from which the crystals

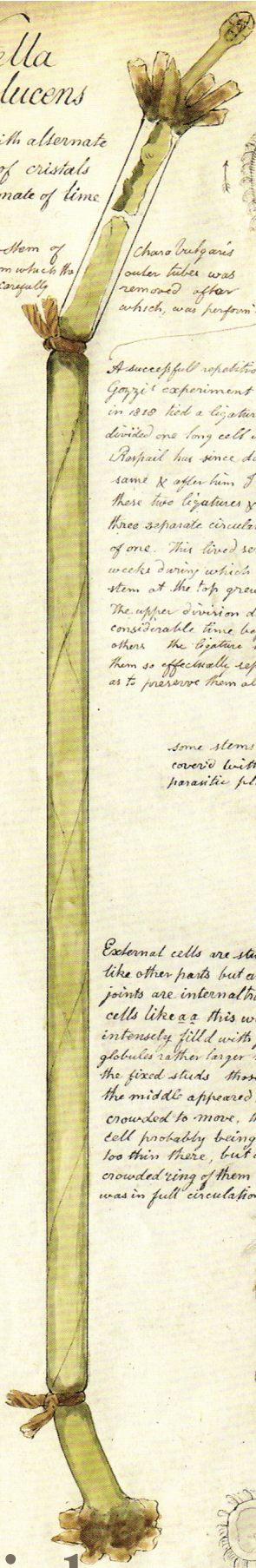
Charo vulgaris outer tubes was removed after which, was perforated

Translucent Vascular cells

A successful repetition of Gay's experiment who in 1810 tied a ligature which divided one long cell into two. Raspail has since done the same & after him I tied these two ligatures & obtained three separate circulations out of one. This lasted several weeks during which the young stem at the top grew out. The upper division died a considerable time before the others the ligatures keeping them so effectually separate as to preserve them alive.

Some stems are nearly covered with small parasitic plants &c.

External cells are studded like other parts but at the joints are internal transparent cells like a a this was intensely filled with green globules rather larger than the fixed studs those in the middle appeared too crowded to move, the cell probably being too thin there, but a crowded ring of them was in full circulation.



Plant Biology
SC/BIOL 2010

GO Green

Cornelius Varley Oct 1844