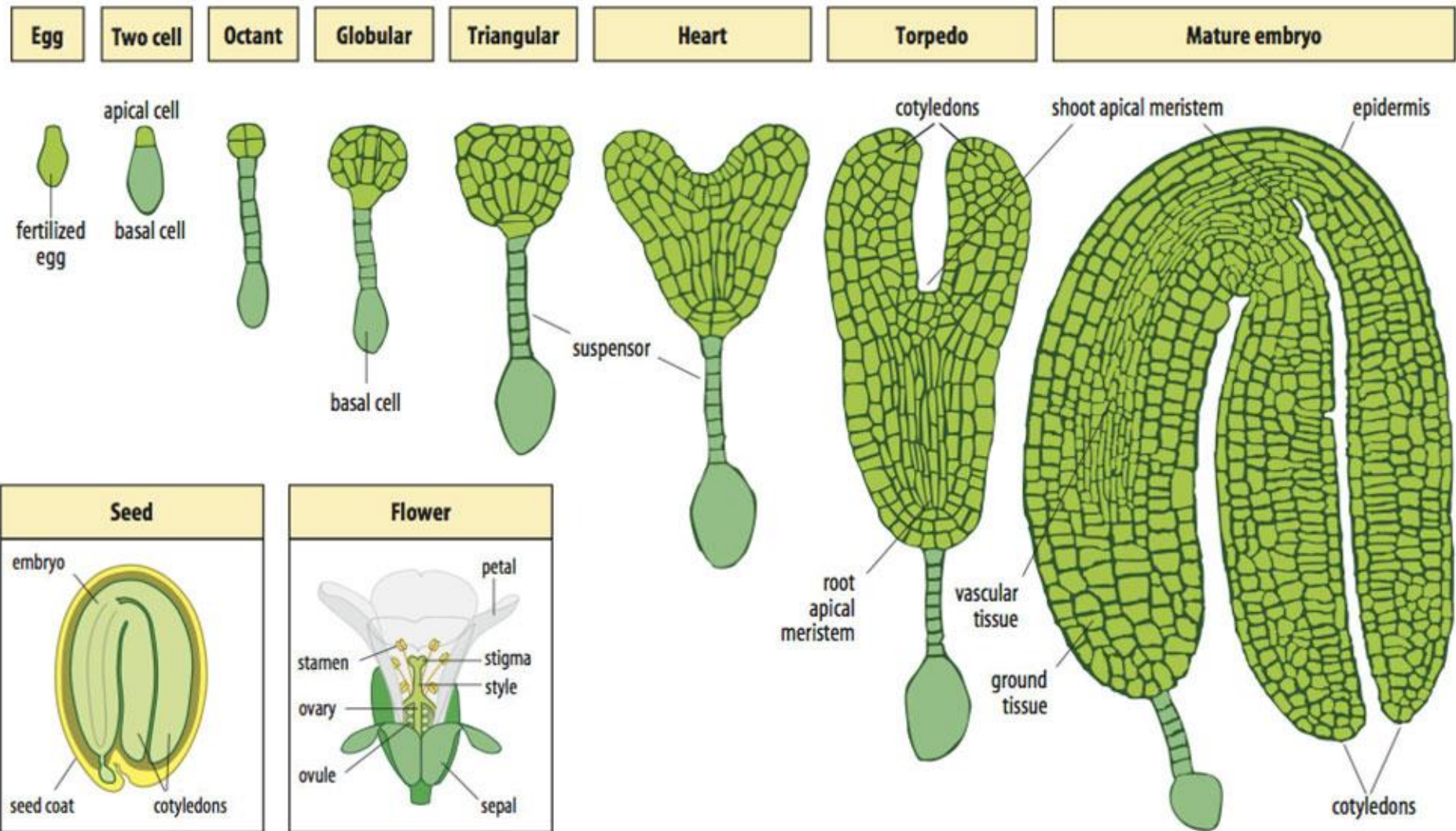
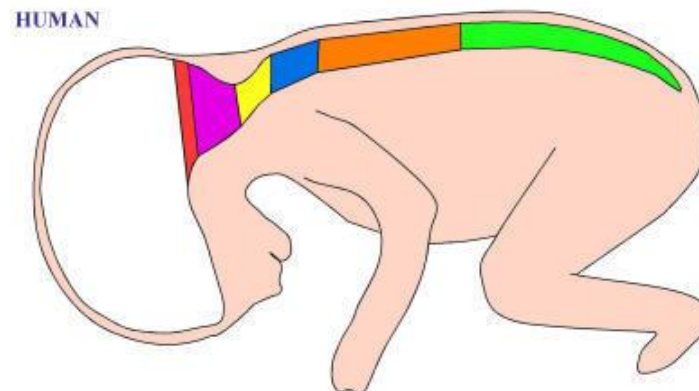
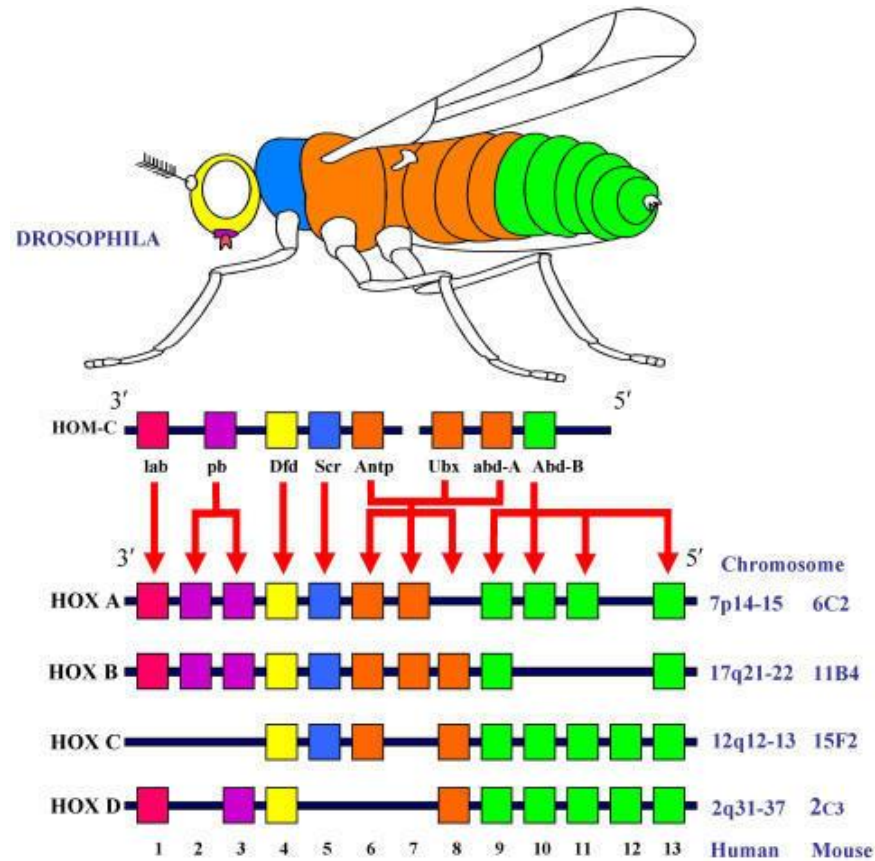


Arabidopsis embryonic development



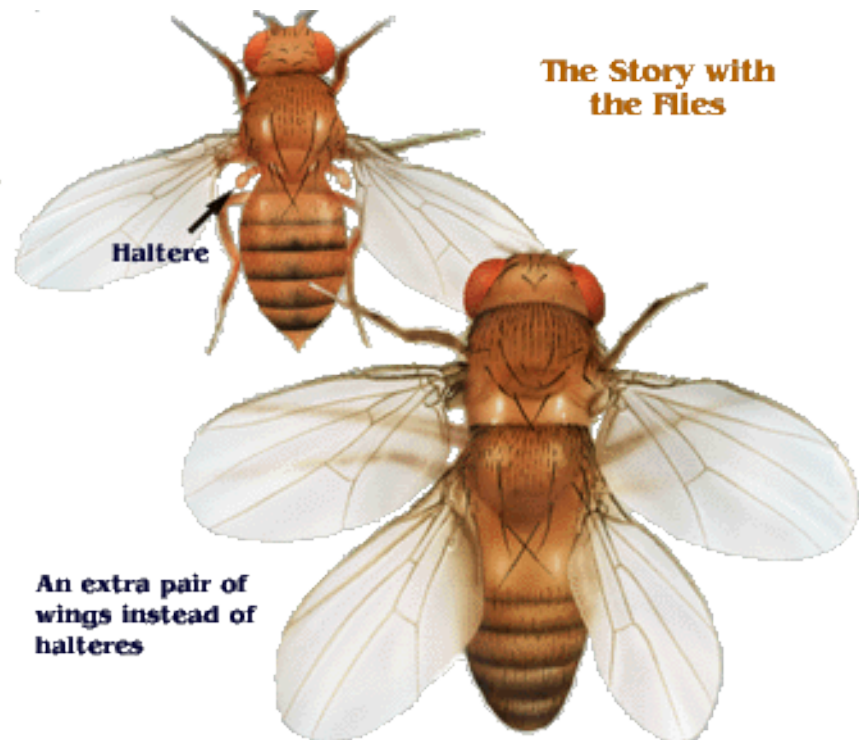
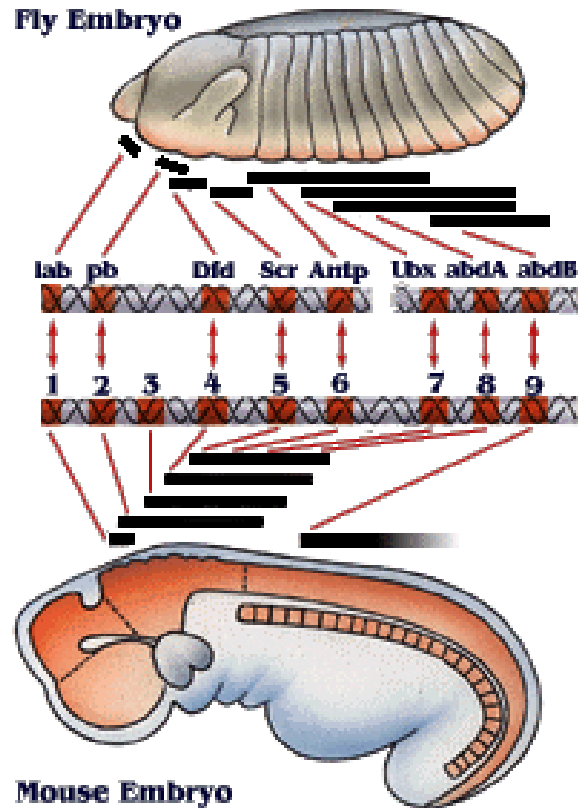
Homeotic genes: determine body parts; conserved in all animals



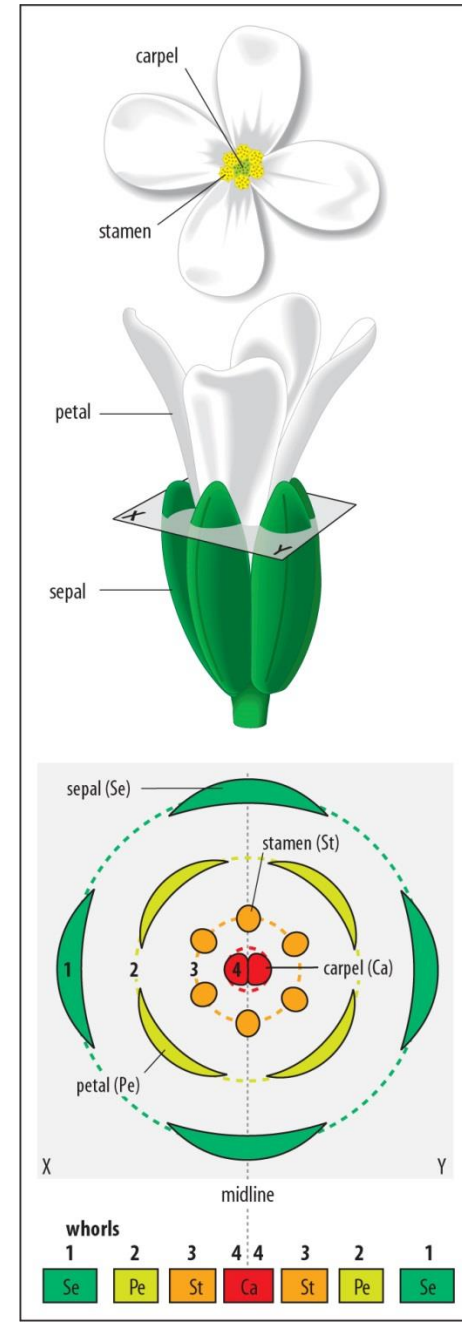
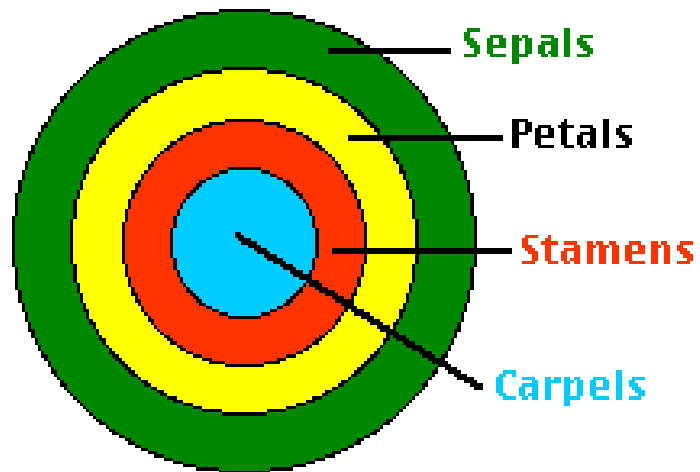
Homeotic transformations in humans are rare!



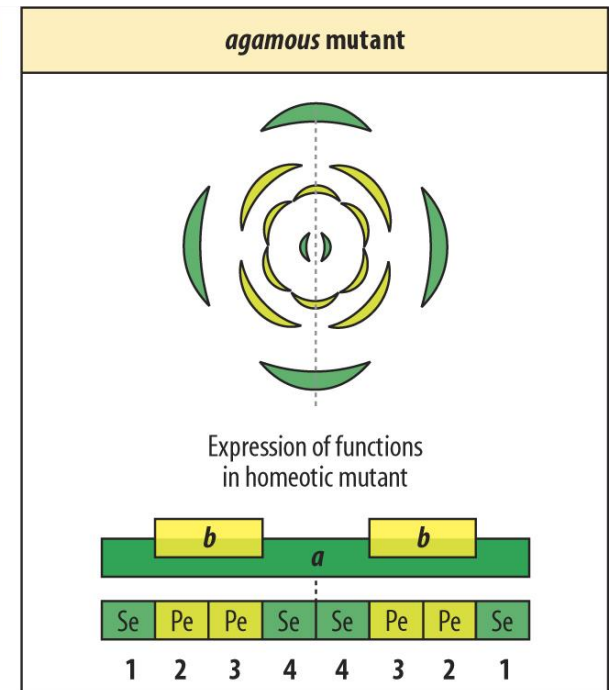
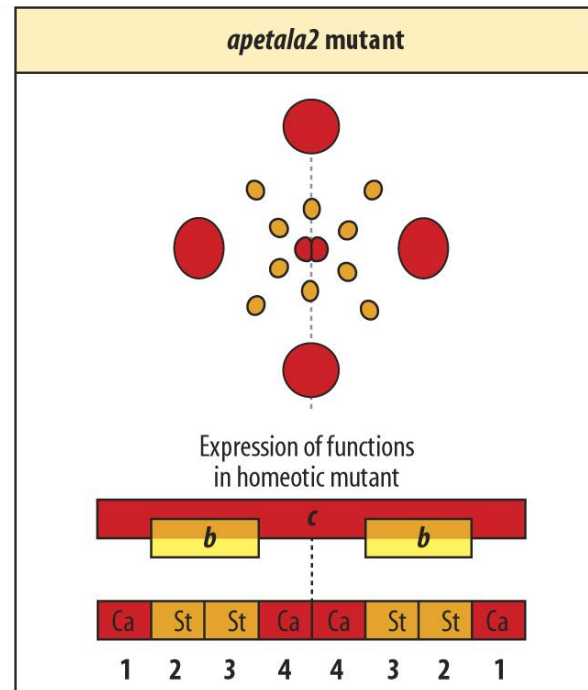
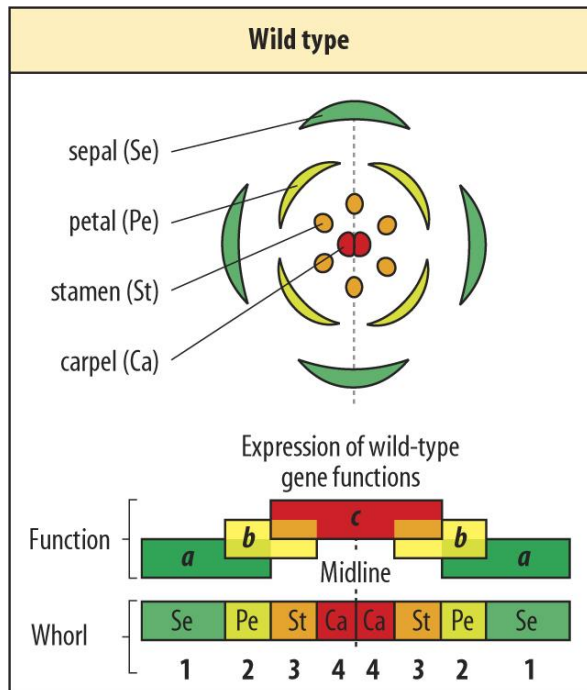
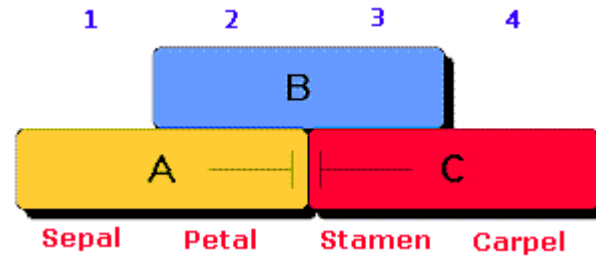
Ubx mutant explained – super freaky AND super easy to understand!



4 whorls (concentric rings) define the location of floral organ primordia

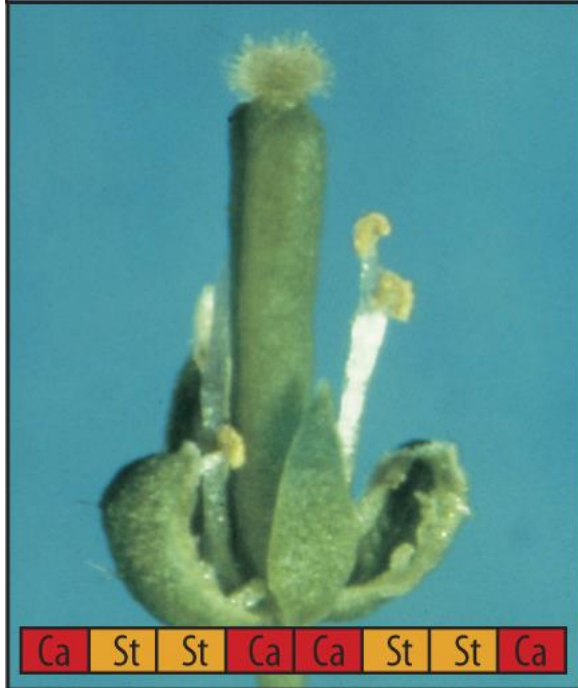


Three groups of genes determine the identity of floral organs

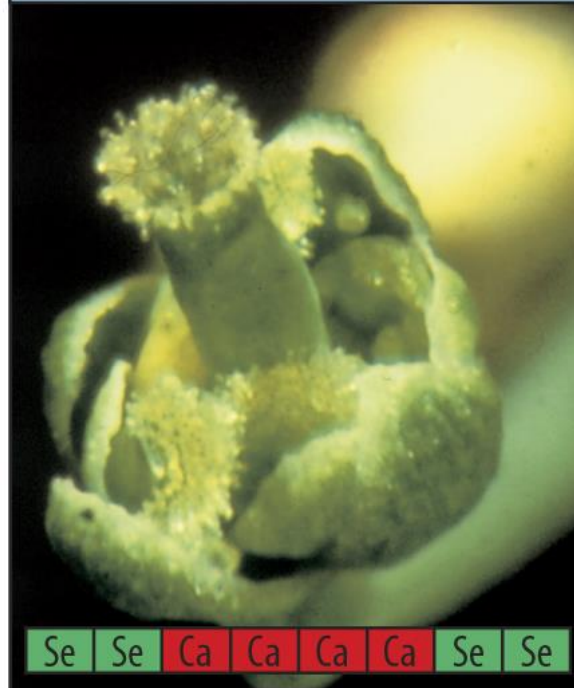


ABC gene mutant phenotypes

apetala2 mutant



apetala3 mutant



agamous mutant

