

Mobilizing Data: TIEDI's experience in understanding Labour Market Outcomes of Immigrants

Stella Park,
TIEDI Project Coordinator, York University
Ph.D. student, University of Toronto

Foreign Qualification Recognition/ Data Workshop
Session 4: February 14-15, 2012, Edmonton, Alberta



What is TIEDI?



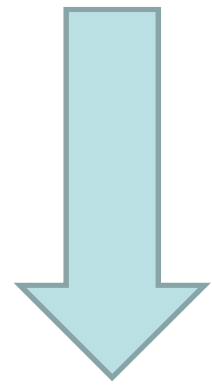
The purpose of the project is to provide community organizations with free access to statistical data and analysis on various aspects of immigrant labour market integration.

The goal is to help organizations access the quantitative data they need in order to: identify priorities, develop programs and services, compose proposals and reports, and carry out advocacy and public education endeavours.

TIEDI model?



Research questions
from community
partners



**Disseminate
Results to
700+ members
- Social media**



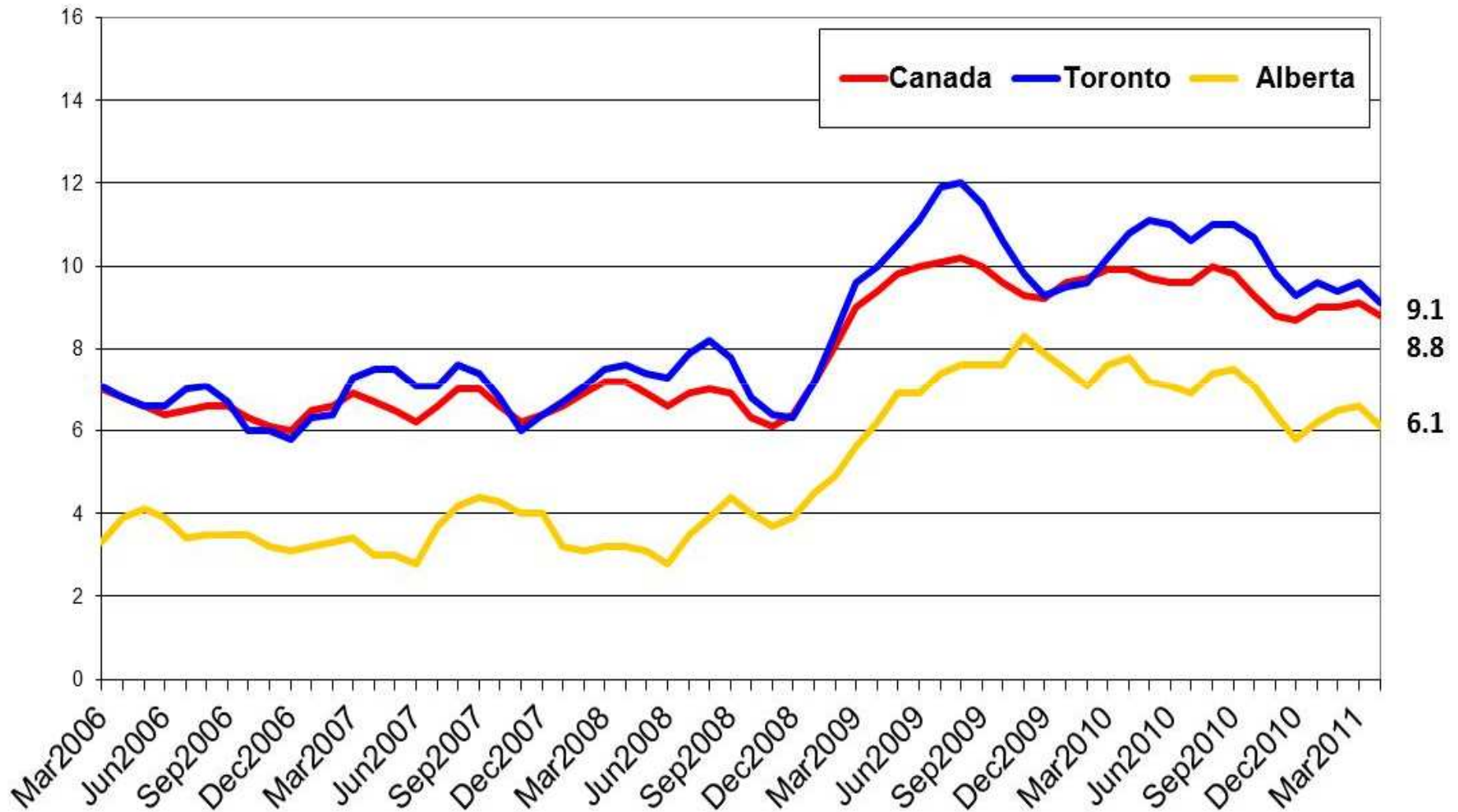
PI: Dr. Philip Kelly
Data Analysis
by TIEDI staff/students



Data used by TIEDI

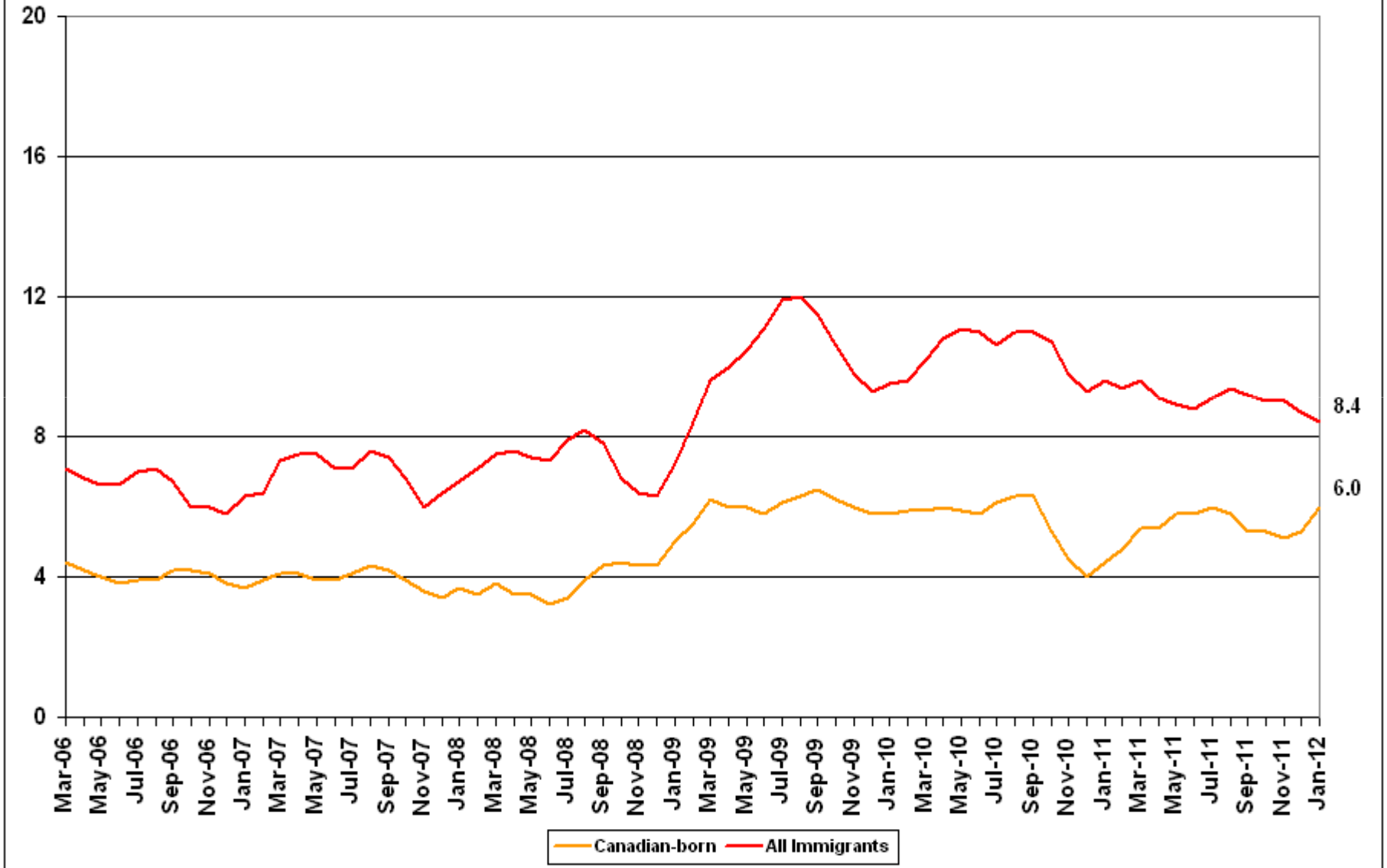
TIEDI	Statistics Canada data				CIC data
	StatCan Website	Data Liberation Initiative	Research Data Centre	Custom order	
Census (2001, 2006)	X	x	x		
Ethnic Diversity Survey (EDS)		x	x		
International Adult Literacy and Skills Survey (IALSS)		x	x		
Labour Force Survey (LFS), 2008+	x	x	x	x	
Longitudinal Survey of Immigrants to Canada (LSIC), 2002			x		
Permanent Residents Data System (PRDS)/ Landings (IMDB)					x
Survey of Labour and Income Dynamics (SLID)		x	x		
Workplace and Employee Survey (WES)			x		

Unemployment Rate, Age 25-54, by Geography, Canada, 2006-2011, 3MMA



Source Statistics Canada. 2011. Special tabulation, based on Labour Force Survey. Labour force estimates by detailed age groups, sex, education level, country of birth, immigrant status, Canada, provinces, 3MMA.

Unemployment rate of 25-54 years old by immigrant status, Toronto CMA, 2006-2012, 3MMA



Source: Statistics Canada. 2012. Special tabulation, based on Labour Force Survey. Labour force estimates by detailed age groups, country of birth, immigrant status, Canada, provinces, 3MMA.

Average annual earnings (2005 dollars) for Canadian-born & immigrants by period of immigration and gender, Toronto CMA,

	CAN -BORN	IMMIGRANT			
		ALL IMMIGRANTS	1981-1990	1991-2000	2001-2006
Women	\$ 18, 408.20	\$ 16, 540.20	\$ 22, 043.70	\$ 15, 441.50	\$ 8, 348.30
Men	\$ 29, 851.80	\$ 28, 037.30	\$ 33, 745.10	\$ 24, 728.30	\$ 14, 737.30

Source: Census 2006, based on *TIEDI Analytical Report 16: January 2011*)

Percent population in relevant employment by place of study of highest education, 2006, Canada



Adapted from TIEDI Analytical Report #14, Table 4 using data from the 2006 Census.



: Credential assessment by regulated occupation and gender, Canada



Adapted from TIEDI Analytical Report #15, Table 4 using data from the Longitudinal Survey of Immigrants to Canada (LSIC). 2000-2001 arrivals only.

¹ Survey questions asked about checking credentials with any person, organization or employer. Recognition is not limited to credential recognition organizations

Other TIEDI reports

- Credential Recognition by immigrant class
 - Credential Assessment by occupation
 - Wages by sources of job search information
 - etc
- Analytical Reports, Fact Sheets, etc

Challenges of working with data

- Large amount of information
- Mandate= Toronto CMA only, employment only

Data challenges

- Reliability
 - Sample size
 - Definitions
 - Immigrants: permanent residents
- Availability
 - Data/information is no longer collected (Census, LSIC)
 - Out-dated information

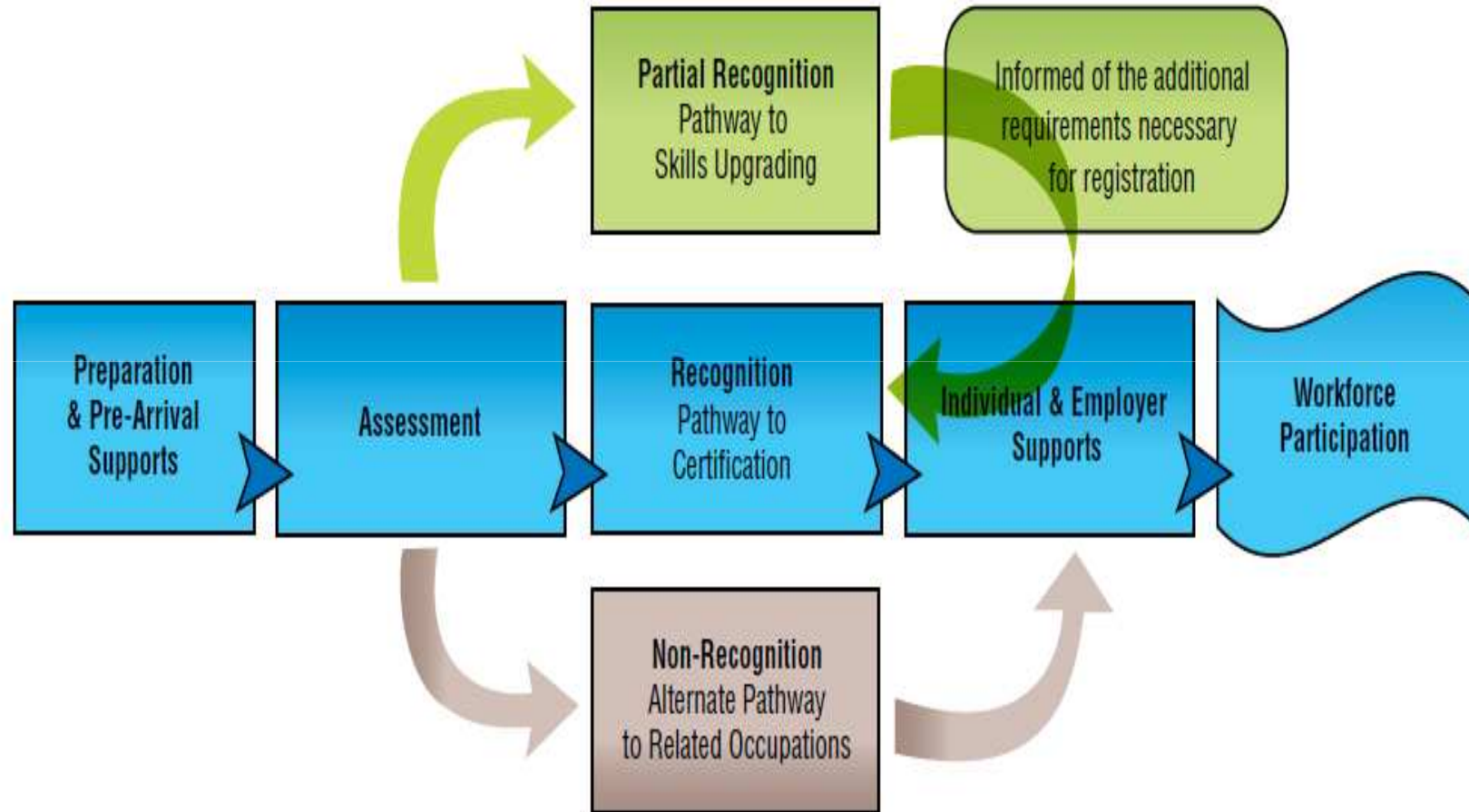


Training and Presentations:



PATHWAYS TO RECOGNITION IN CANADA

Pan-Canadian Framework for the Assessment and Recognition of Foreign Qualifications *



* Focus on *regulated* occupations

Conclusion

- 1) TIEDI = Community-based partnership research
(government + academics + immigrant service agencies)
- 2) Use variety of data sources to measure labour market outcomes of immigrants
- 3) Diversity in credential recognition process varies by
 - Gender
 - Country of origin/ place of highest degree

“Are we speeding up recognition/regulation, and not speeding up under-employment?”

» Credential Recognition → Employment
(but what type? E.g. under-employment)

More information,

- TIEDI website, <http://www.yorku.ca/tiedi/>
- Email: Dr. Philip Kelly, Principal Investigator (pfkelly@yorku.ca) or Stella Park, TIEDI Coordinator, pstella@yorku.ca

License:

- There is no cost to use the figures included in this file. We ask however that you acknowledge TIEDI and use the figures for non-commercial purposes only.
- For comments or questions, contact the TIEDI Principal Investigator, Dr Philip Kelly (pfkelly@yorku.ca), or the TIEDI Project Coordinator, Stella Park (pstella@yorku.ca).