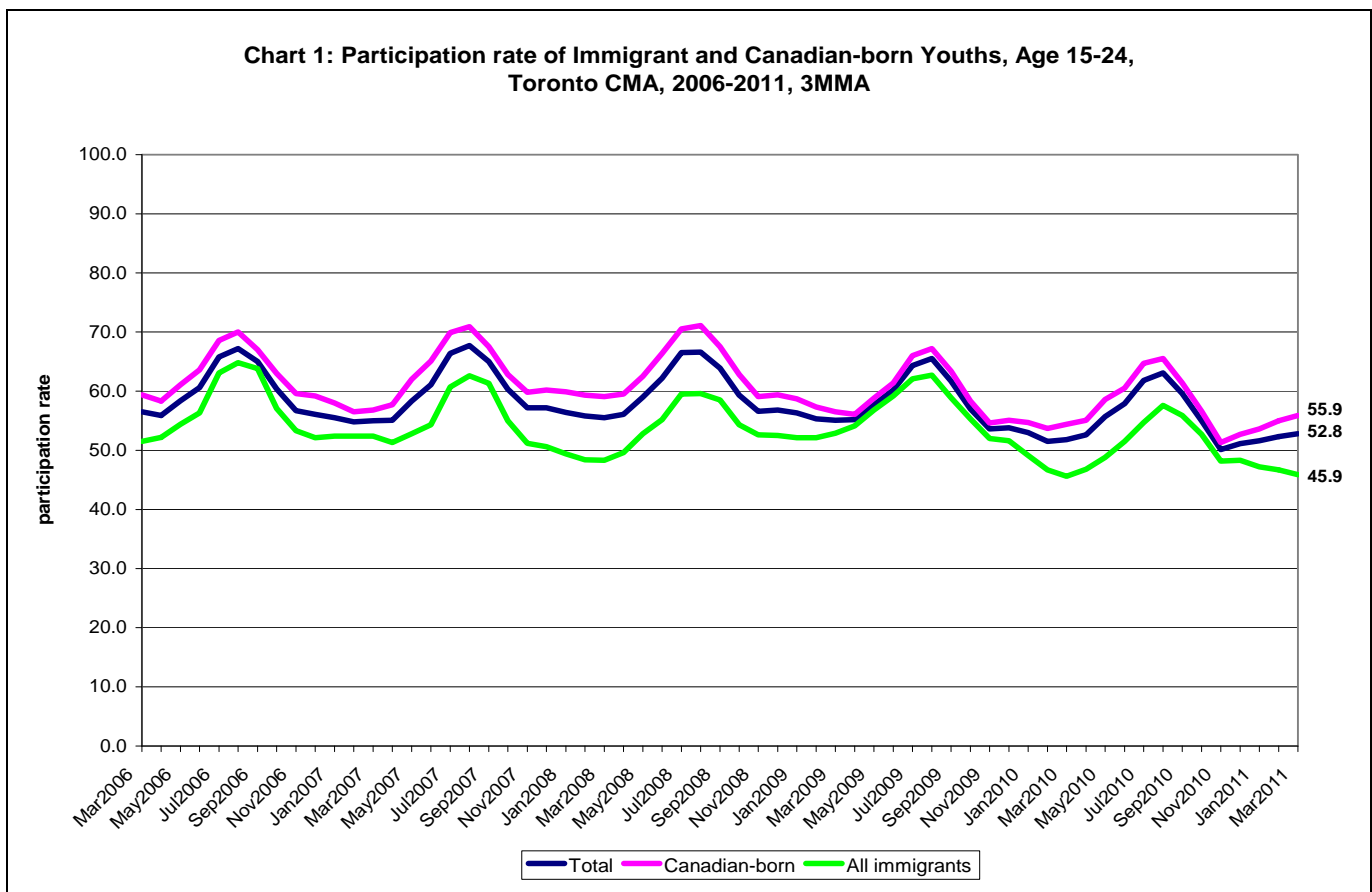


Question: What are the employment outcomes (participation rate, unemployment rate, proportion in part-time employment) of immigrant and Canadian-born youths (age 15-24) in Toronto CMA¹ and Canada?

Please note that these data are not comparable to the data released by Statistics Canada in 'The Daily.' Data from The Daily is seasonally adjusted, while these data are adjusted using a different methodology, the 3-month moving average (3MMA). The greater monthly variability in the participation rates of youths is likely attributable to a smaller sample size and as a result, findings should be used with caution.

Answer: Charts 1-3 show participation rate, unemployment rate and proportion in part-time employment of immigrant and Canadian-born youths (age 15-24) in Toronto CMA from March 2006-March 2011.



¹ CMA stands for Census Metropolitan Area and is a geographical area mainly used by Statistics Canada. The Toronto CMA includes the City of Toronto, York Region, Peel Region and parts of other regions. For more information, see: <http://www12.statcan.ca/english/census06/reference/dictionary/geo009.cfm>.

Chart 2: Unemployment rate of Immigrant and Canadian-born Youths, Age 15-24, Toronto CMA, 2006-2011, 3MMA

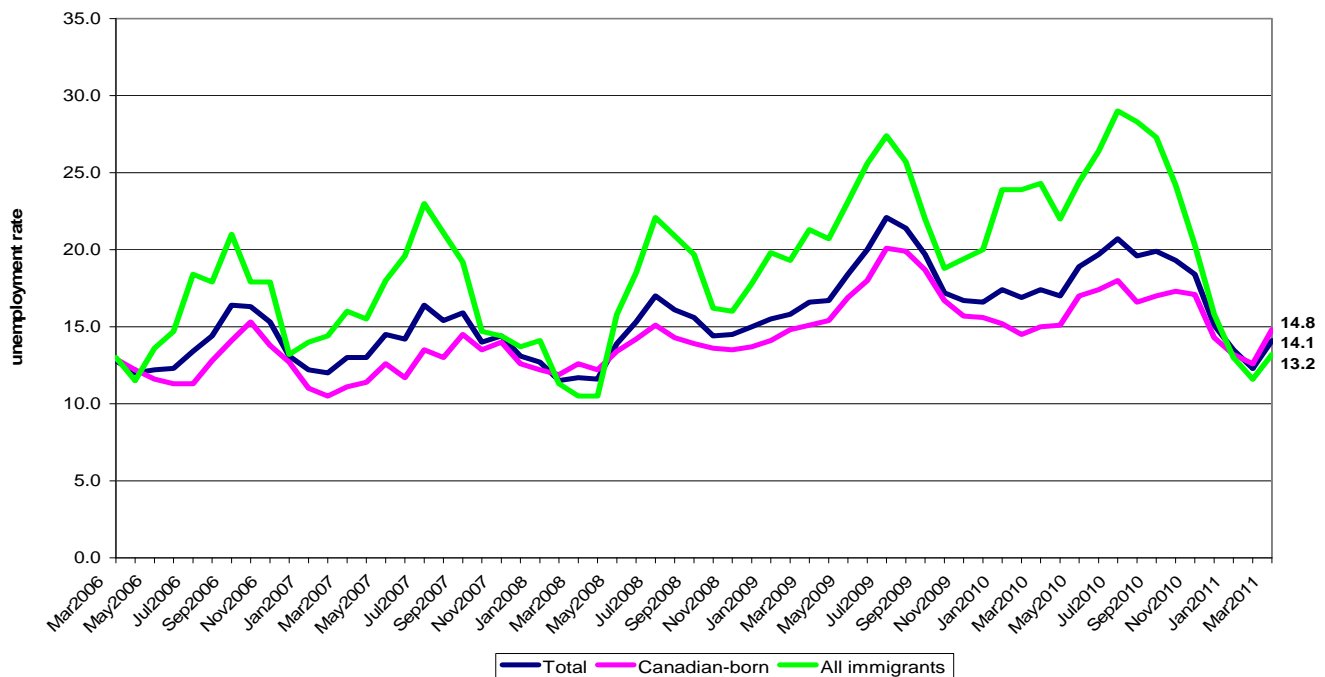
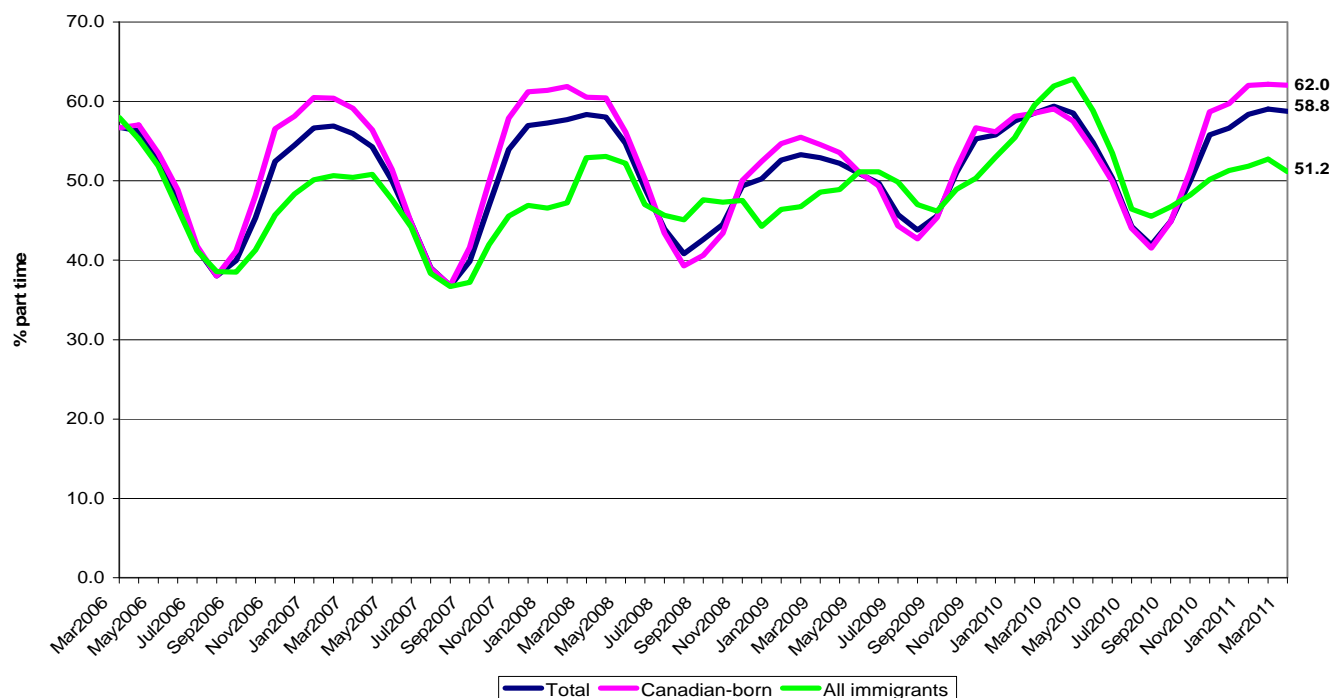


Chart 3: Proportion in Part-time Employment of Immigrant and Canadian-born Youths, Age 15-24, Toronto, 2006-2011, 3MMA



Charts 4-6 show participation rate, unemployment rate and proportion in part-time employment of immigrant and Canadian-born youths (age 15-24) in Canada from March 2006-March 2011.

Chart 4: Participation rate of Immigrant and Canadian-born Youths, Age 15-24, Canada, 2006-2011, 3MMA

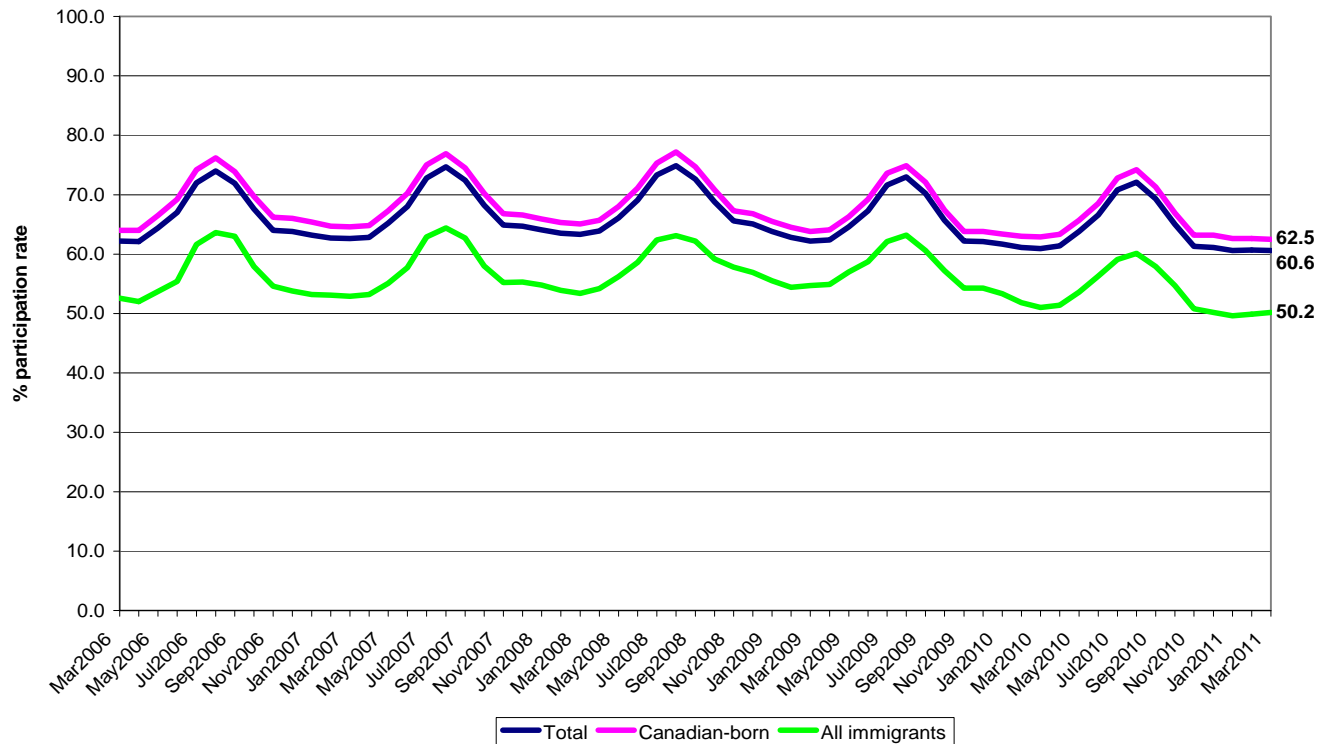


Chart 5: Unemployment rate of Immigrant and Canadian-born Youths, Age 15-24, Canada, 2006-2011, 3MMA

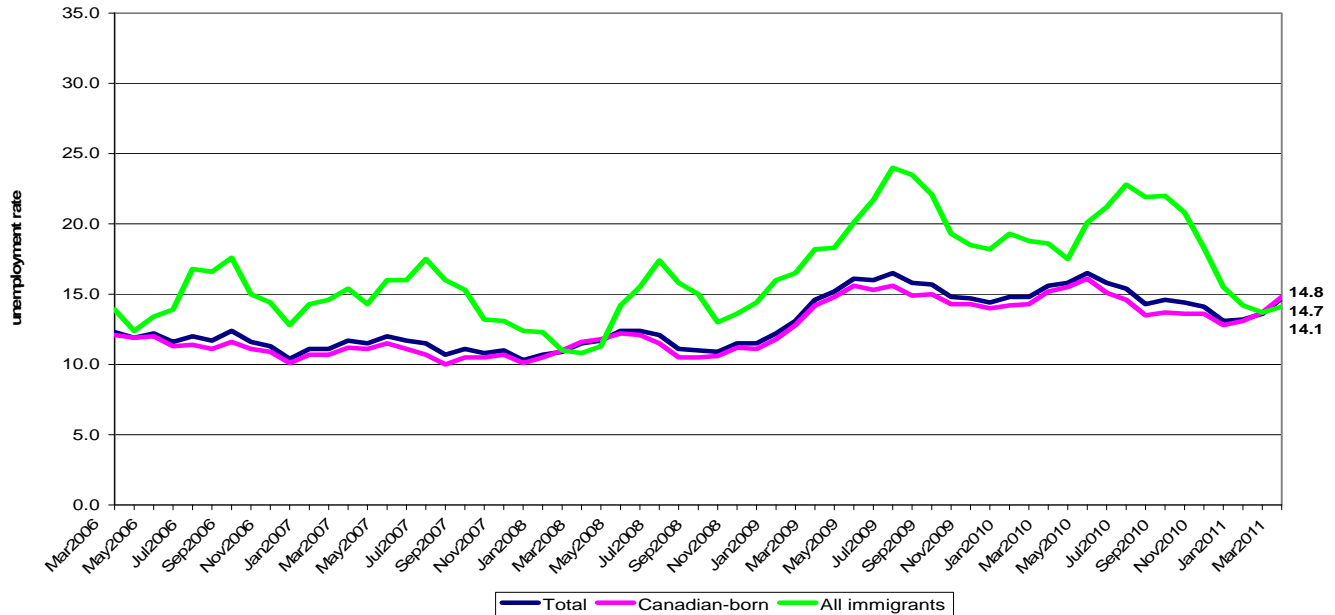
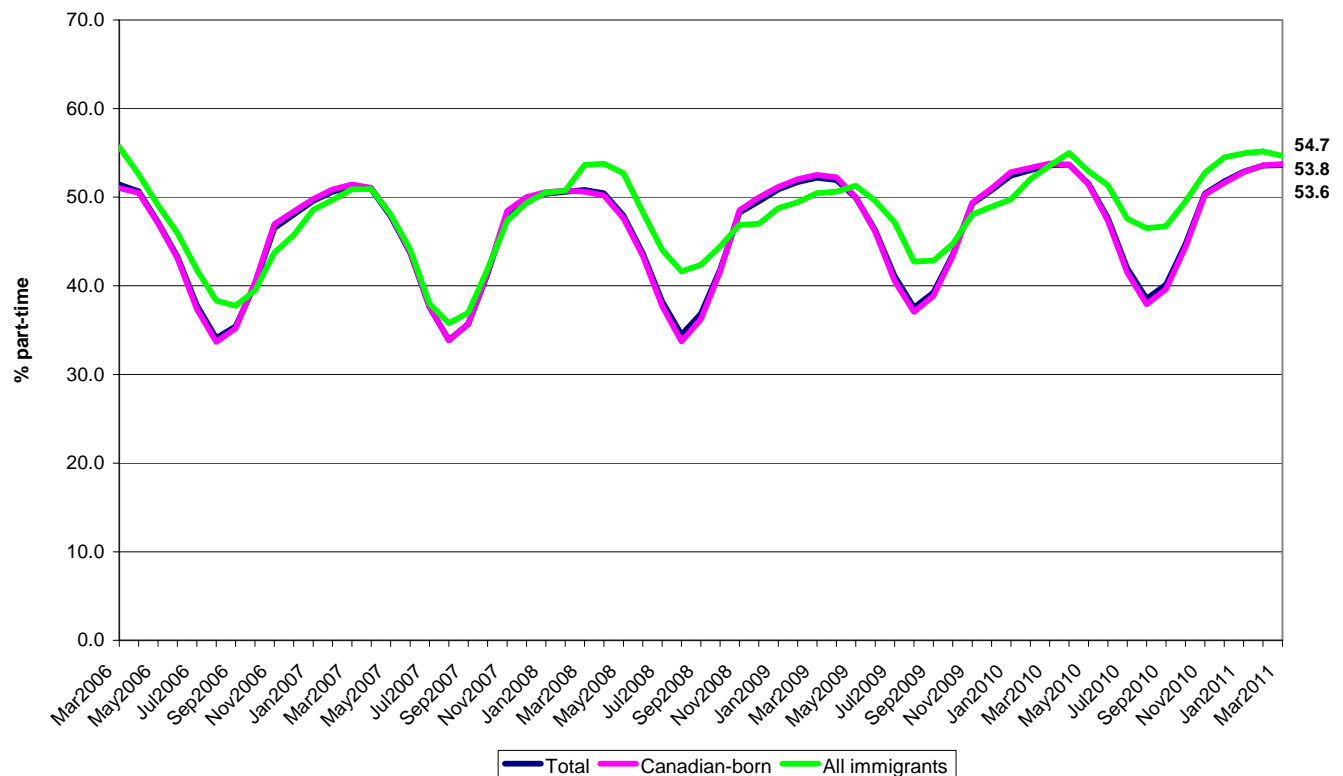


Chart 6: Proportion in Part-time Employment of Immigrant and Canadian-born Youths, Age 15-24, Canada, 2006-2011, 3MMA



Data Sources:

Statistics Canada. 2011. Special tabulation, based on Labour Force Survey. Labour force estimates by detailed age groups, sex, education level, country of birth, immigrant status, Canada, provinces, 3MMA.

This rapid data request is from [Kapisanan Philippine Centre for Arts & Culture](#).

While the research and analysis are based on data from Statistics Canada, the opinions expressed do not represent the views of Statistics Canada. Please note that these data are not comparable to the data released by Statistics Canada in The Daily. Data from The Daily is seasonally adjusted, while these data are adjusted using a different methodology, the 3-month moving average (3MMA).

The [Toronto Immigrant Employment Data Initiative \(TIEDI\)](#) seeks to assist organizations whose mandate includes the better integration of immigrants into Toronto's labour force. Such partner organizations include immigrant service agencies and advocacy groups, labour organizations, regulatory bodies, professional associations, training organizations, and credential assessment agencies. For further information, you can visit our website at, <http://www.yorku.ca/tiedi/> or contact the TIEDI Principal Investigator, Dr Philip Kelly (pfkelly@yorku.ca), or the TIEDI Project Coordinator, Stella Park (pstella@yorku.ca).

Important Notice:

The Labour Force Survey is based on a sample of 53,000 households (representing approximately 100,000 individuals) across Canada, including 16,000 households in the province of Ontario. Due to the limited sample size, data on smaller groups have a higher coefficient of variation.

As a result, findings should be used with caution. Month-to-month variability in the Toronto data (compared to Canadian data) and in data on recent immigrants across Canada (compared to the larger groups of all immigrants and Canadian-born) should be attributed to data inaccuracies.

Starting with the release of LFS data for January 2011, Statistics Canada has adjusted its labour force estimates to be based on the 2006 Census population counts; sub-provincial estimates to be based on 2006 Census boundaries; industry estimates to be based on North American Industry Classification System 2007; and occupational estimates to be based on National Occupational Classification- Statistics 2006. Until December 2010, labour force estimates had been based on population data from the 2001 Census. Although these revisions have had some minor impacts on the LFS estimates, this report uses updated LFS data from 2006 to 2011. For more information about these changes to LFS data, see <http://www.statcan.gc.ca/bsolc/olc-cel/olc-cel?catno=71F0031X&lang=eng>.

Definitions & Notes

3-month moving average: Data from this report uses 3-month moving average (3MMA). Three-month moving averages are calculated by averaging a specific month with the two preceding ones (for example, May 2011 data is calculated using the averages for March, April and May 2011). Moving averages are used to reduce irregular variability in the data due to seasonal variations and the small sample sizes of the LFS.

Part-time employment: Proportion of individuals holding part-time employment among those who are currently employed or who last worked within the previous year. A person is considered to be part-time if his/her usual hours at the main job is less than 30 hours per week. A person is considered to be full-time if his/her usual hours at the main job are 30 or more hours per week.

Immigrants: Includes permanent residents and those who have been naturalized as Canadian citizens. Canadian citizens by birth and non-permanent residents (persons from another country who live in Canada and have a work or study permit, or are claiming refugee status, as well as family members living here with them) are not landed immigrants.

Labour force: Civilian non-institutional population 15 years of age and over who, during the survey reference week, were employed or unemployed. Prior to 1966, persons aged 14 and over were covered by the survey.

Participation rate: The participation rate represents the labour force expressed as a percentage of the population 15 years of age and over. The participation rate for a particular group (age, sex, etc.) is the labour force in that group expressed as a percentage of the population for that group.

Toronto CMA: CMA stands for Census Metropolitan Area. The Toronto CMA is the grey-shaded area in Figure 1. It includes the City of Toronto, York Region, Peel Region and parts of Halton and Durham Regions. Other municipalities, such as New Tecumseth in southern Simcoe County and Mono Township in Dufferin County are also included in the Toronto CMA. CMAs are geographical areas mainly used by Statistics Canada.

Unemployment rate: The unemployment rate represents the number of unemployed persons expressed as a percentage of the labour force. The unemployment rate for a particular group (age, sex, etc.) is the number unemployed in that group expressed as a percentage of the labour force for that group.

For more information, website: <http://www.statcan.gc.ca/pub/71-543-g/2010001/part-partie3-eng.htm>.

