

Introduction to TIEDI

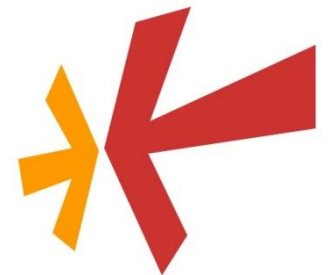
Dr Philip Kelly
Principal Investigator, TIEDI
Associate Professor, Department of Geography, York University

**TIEDI Forum,
October 7th, 2011**



License:

- There is no cost to use the figures included in this file. We ask however that you acknowledge TIEDI and use the figures for non-commercial purposes only.
- For comments or questions, contact the TIEDI Principal Investigator, Dr Philip Kelly (pfkelly@yorku.ca), or the TIEDI Project Coordinator, Stella Park (pstella@yorku.ca).



What is TIEDI?

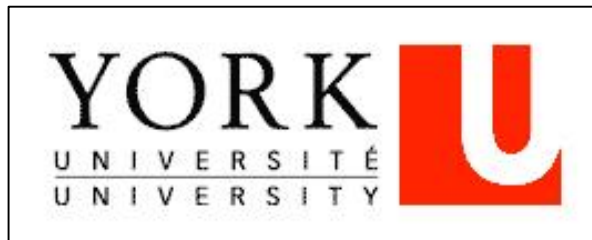


Social Sciences and Humanities
Research Council of Canada

Conseil de recherches en
sciences humaines du Canada

Canada

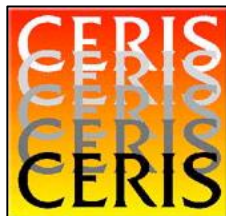
+



+

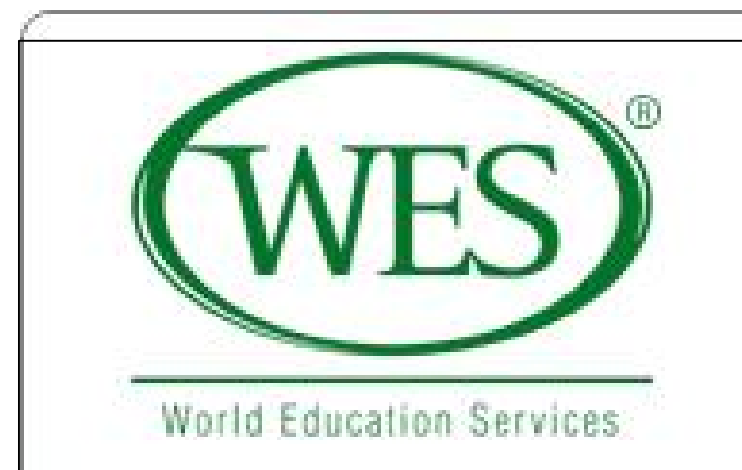


+

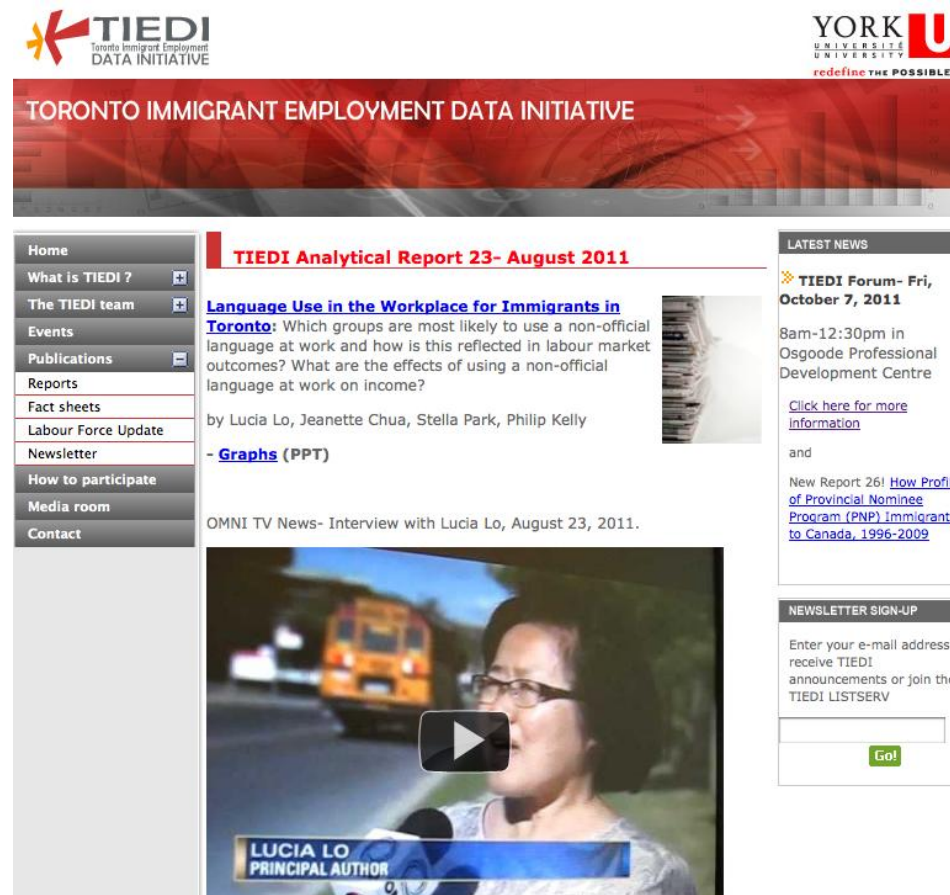


=





TIEDI Output: Analytical Reports (~30)



TIEDI
Toronto Immigrant Employment
DATA INITIATIVE

YORK
UNIVERSITÉ
UNIVERSITY
redefine THE POSSIBLE.

TORONTO IMMIGRANT EMPLOYMENT DATA INITIATIVE

Home
What is TIEDI ?
The TIEDI team
Events
Publications
Reports
Fact sheets
Labour Force Update
Newsletter
How to participate
Media room
Contact

TIEDI Analytical Report 23- August 2011

Language Use in the Workplace for Immigrants in Toronto: Which groups are most likely to use a non-official language at work and how is this reflected in labour market outcomes? What are the effects of using a non-official language at work on income?

by Lucia Lo, Jeanette Chua, Stella Park, Philip Kelly

- [Graphs](#) (PPT)

OMNI TV News- Interview with Lucia Lo, August 23, 2011.

LATEST NEWS

TIEDI Forum- Fri, October 7, 2011

8am-12:30pm in Osgoode Professional Development Centre

[Click here for more information](#)

and

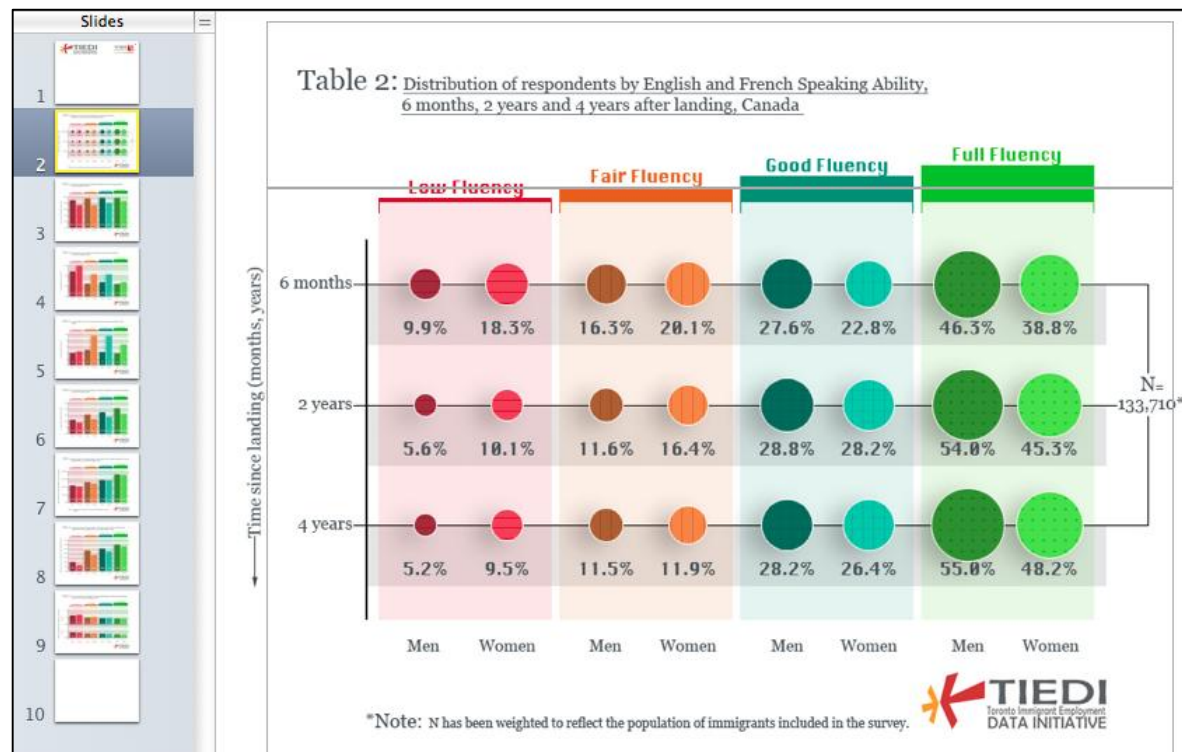
New Report 26! [How Profile of Provincial Nominee Program \(PNP\) Immigrants to Canada, 1996-2009](#)

NEWSLETTER SIGN-UP

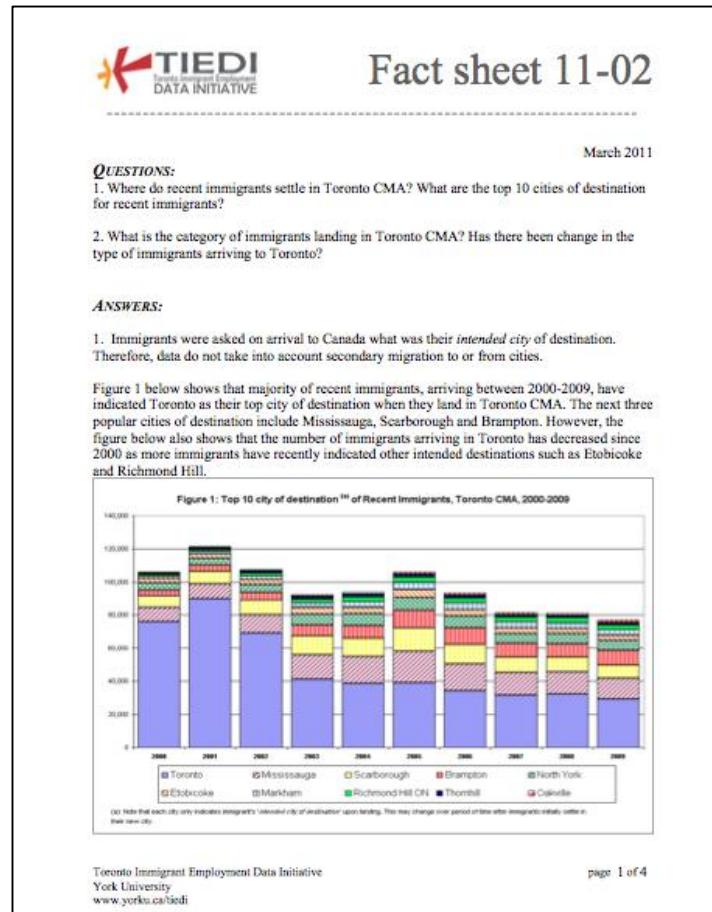
Enter your e-mail address to receive TIEDI announcements or join the TIEDI LISTSERV

LUCIA LO
PRINCIPAL AUTHOR

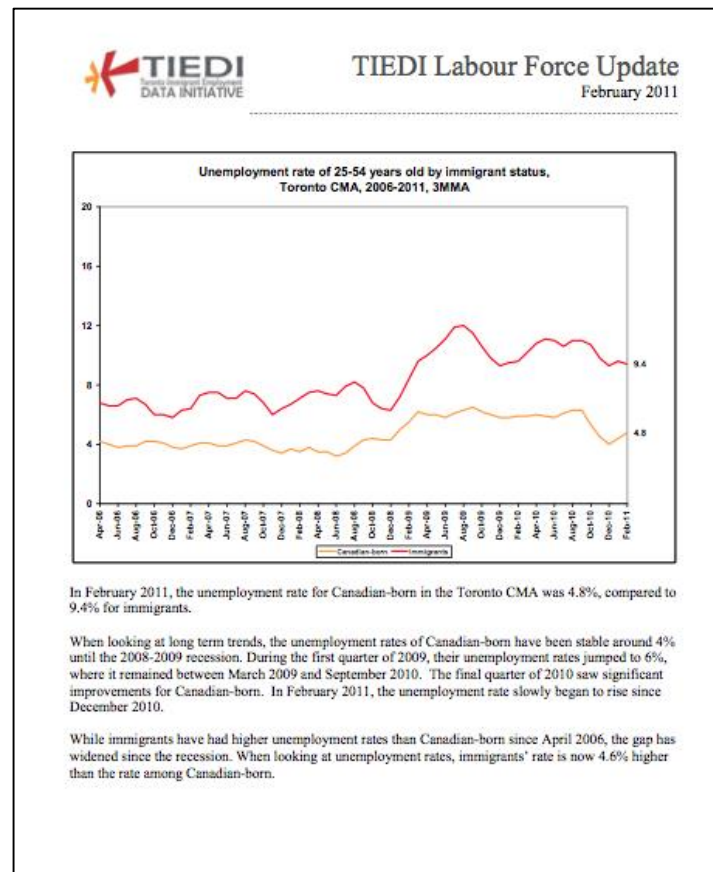
Powerpoint slides/notes



TIEDI Output: Rapid Data / Factsheets



TIEDI Output: Labour Force Update



Datasets used:

- **Census, 2006**
- **Ethnic Diversity Survey (EDS), 2002**
- **International Adult Literacy and Skills Survey (IALSS), 2003**
- **Longitudinal Survey of Immigrants to Canada (LSIC), 2001-2004**
- **Workplace and Employee Survey (WES), 1999-2005**
- **Labour Force Survey (LFS), Monthly, 2006-current**
- **Permanent Resident Data System (PRDS), 1980-2009**



www.yorku.ca/tiedi