

The [Toronto Immigrant Employment Data Initiative](#) (TIEDI)'s Labour Force Update aims to provide up-to-date labour market data on immigrants. This monthly report relies on data from the Labour Force Survey (LFS) that is not available elsewhere free of charge. The report is broken down into sections covering labour market data for the Toronto CMA and Canada as a whole.

Please note that these data are not comparable to the data released by Statistics Canada in The Daily. Data from The Daily is seasonally adjusted, while these data are adjusted using a different methodology, the 3-month moving average.

TIEDI has access to Labour Force Survey data on unemployment/employment and participation by gender, education, age groups (15+ years old, 15-24, 25-54, 55+ years old), immigrant status, period of arrival (5 years or less, 5+ years, 5-10 years, and 10+ years in Canada), province and CMA of residence (Toronto, Montreal and Vancouver). We also have access to data on full-time/part-time employment by broad industry, gender, education, age groups (15+ years old, 15-24, 25-54, 55+ years old), immigrant status, period of arrival (5 years or less, 5+ years, 5-10 years, and 10+ years in Canada), province and CMA of residence (Toronto, Montreal and Vancouver).

Please contact the TIEDI Principal Investigator, Dr. Philip Kelly (pfkelly@yorku.ca), or the TIEDI Project Coordinator, Stella Park (pstella@yorku.ca) if you would like us to expand our labour market data analysis with more tables or graphs. TIEDI website address is <http://www.yorku.ca/tiedi/index.html>.

Important Notice:

The Labour Force Survey is based on a sample of 53,000 households (representing approximately 100,000 individuals) across Canada, including 16,000 households in the province of Ontario. Due to the limited sample size, data on smaller groups have a higher coefficient of variation.

As a result, findings should be used with caution. Month-to-month variability in the Toronto data (compared to Canadian data) and in data on recent immigrants across Canada (compared to the larger groups of all immigrants and Canadian-born) should be attributed to data inaccuracies.

Starting with the release of LFS data for January 2011, Statistics Canada has adjusted its labour force estimates to be based on the 2006 Census population counts; sub-provincial estimates to be based on 2006 Census boundaries; industry estimates to be based on North American Industry Classification System 2007; and occupational estimates to be based on National Occupational Classification- Statistics 2006. Until December 2010, labour force estimates had been based on population data from the 2001 Census. Although these revisions have had some minor impacts on the LFS estimates, this report uses updated LFS data from 2006 to 2011. For more information about these changes to LFS data, see <http://www.statcan.gc.ca/bsolc/olc-cel/olc-cel?catno=71F0031X&lang=eng>.

Sources:

Statistics Canada. 2011. Special tabulation, based on Labour Force Survey. Employment by industry, detailed age groups, sex, immigrant, type of work, Canada, provinces, 3MMA.

Statistics Canada. 2011. Special tabulation, based on Labour Force Survey. Labour force estimates by detailed age groups, sex, education level, country of birth, immigrant status, Canada, provinces, 3MMA.

Labour force data for the Toronto CMA

Employment (in thousands) by industry, among Canadian-born and All Immigrants, Toronto CMA, Age 15+, November 2010 and 2011, 3MMA¹

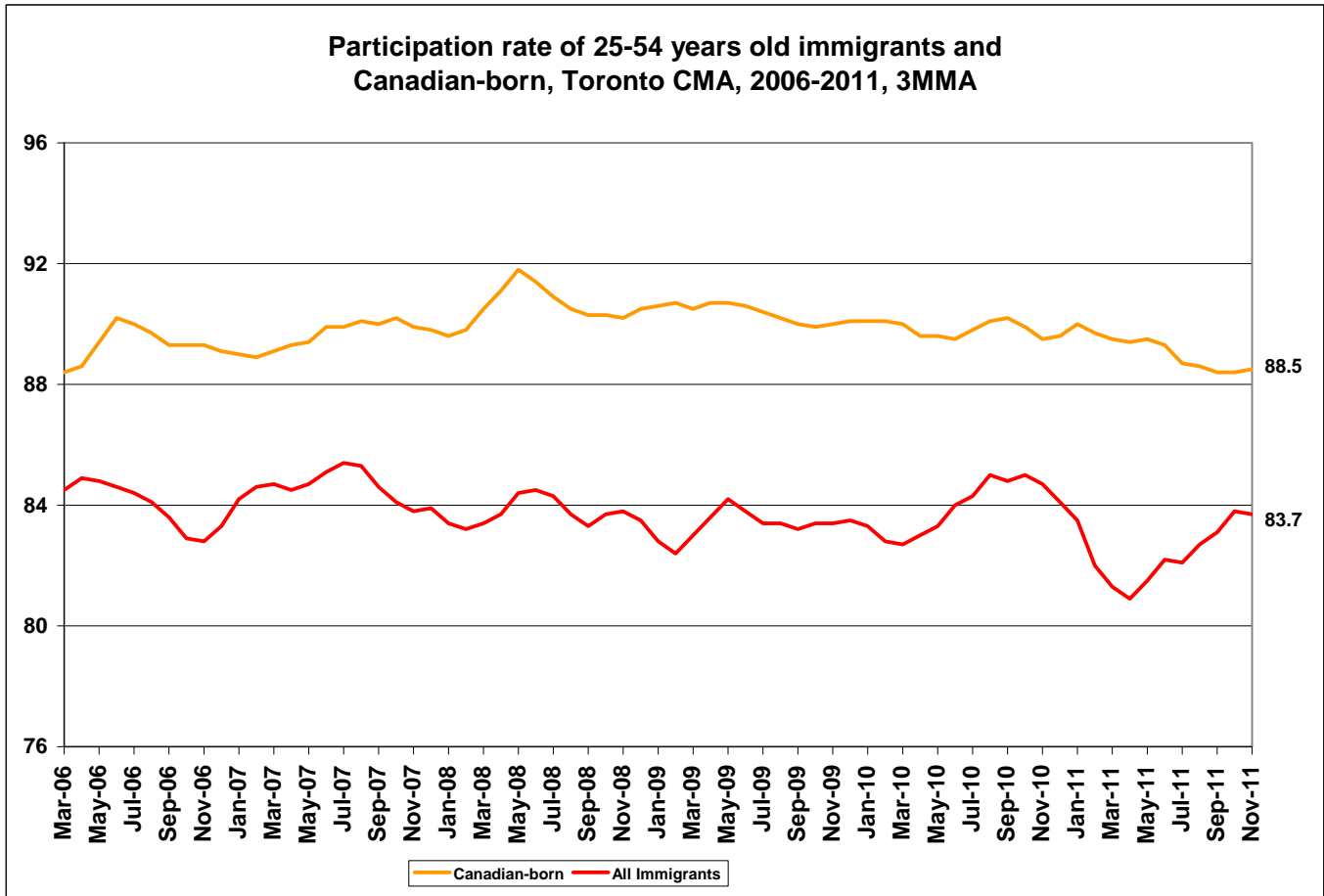
	Canadian-born			All Immigrants		
	Nov. 2010	Nov. 2011	Difference in thousands	Nov. 2010	Nov. 2011	Difference in thousands
Goods-producing sector	232.1	231.4	-0.7	290.9	312.6	21.7
Agriculture	9.3	6.9	-2.4	1.6	2.4	0.8
Forestry, fishing, mining, oil and gas	0.0	3.8	3.8	2.1	3.5	1.4
Utilities	9.9	8.8	-1.1	5.2	9.3	4.1
Construction	91.0	99.0	8.0	74.5	84.8	10.3
Manufacturing	120.7	113.0	-7.7	207.6	212.6	5.0
Services-producing sector	1292.5	1244.3	-48.2	1068.9	1104.7	35.8
Trade	232.6	222.3	-10.3	200.9	184.8	-16.1
Transportation and warehousing	68.1	66.1	-2.0	82.6	88.9	6.3
Finance, insurance, real estate and leasing	165.9	157.9	-8.0	125.3	134.8	9.5
Professional, scientific and technical services	182.6	171.5	-11.1	131.3	135.6	4.3
Business, building and other support services	66.3	60.3	-6.0	70.3	74.1	3.8
Educational services	148.4	133.1	-15.3	69.7	66.4	-3.3
Health care and social assistance	118.7	122.9	4.2	140.0	154.8	14.8
Information, culture and recreation	124.3	123.2	-1.1	59.6	59.6	0.0
Accommodation and food services	63.2	67.4	4.2	82.9	90.6	7.7
Other services	43.1	46.3	3.2	61.7	61.0	-0.7
Public administration	79.2	73.2	-6.0	44.5	54.2	9.7
Total	1524.6	1475.7	-48.9	1359.9	1417.4	57.5

¹Data from this report uses 3-month moving average (3MMA). Three month moving averages are calculated by averaging a specific month with the two preceding ones.

When comparing the Toronto CMA labour market in November 2010 and November 2011, job gains benefited immigrants more than Canadian-born. Immigrants gained 57,500 jobs while Canadian-born lost 48,900 jobs. For Canadian-born, 48,200 jobs were lost in the service-producing sector, and 700 jobs in the goods-producing sector. Immigrants saw employment increases both in the service-producing sector (35,800 jobs) and in the goods-producing sector (21,700 jobs).

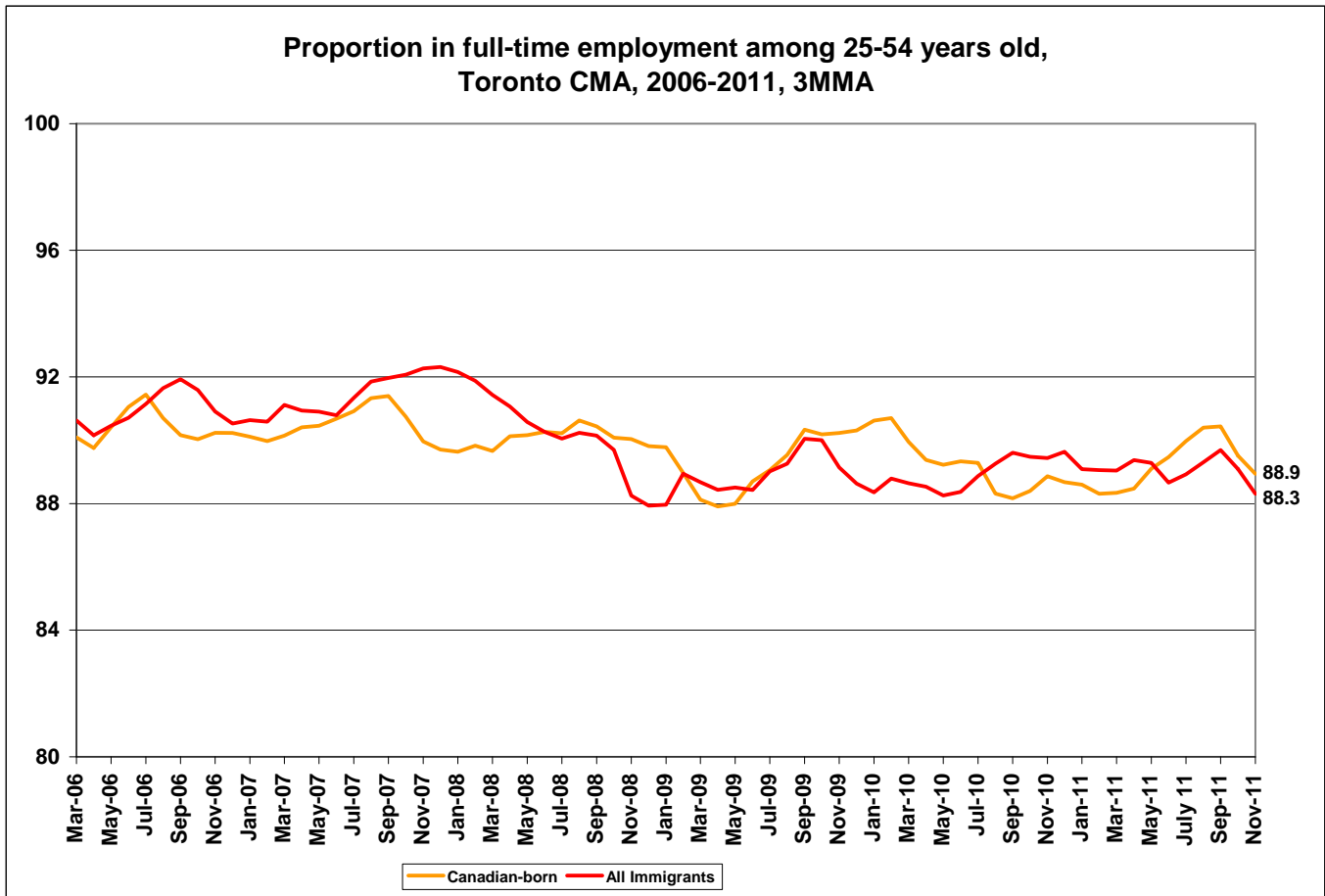
For immigrants, notable job gains were in health care and social assistance (14,800 jobs), construction (10,300 jobs) and finance, insurance, real estate and leasing (9,500 jobs). Large job losses for immigrants were found in trade (16,100 jobs) and in educational services (3,300 jobs).

Overall, these figures indicate a trend of immigrants gaining jobs in the goods-producing sector, with Canadian-born continuing to move out of the manufacturing sector, in particular, and immigrants moving into the sector.

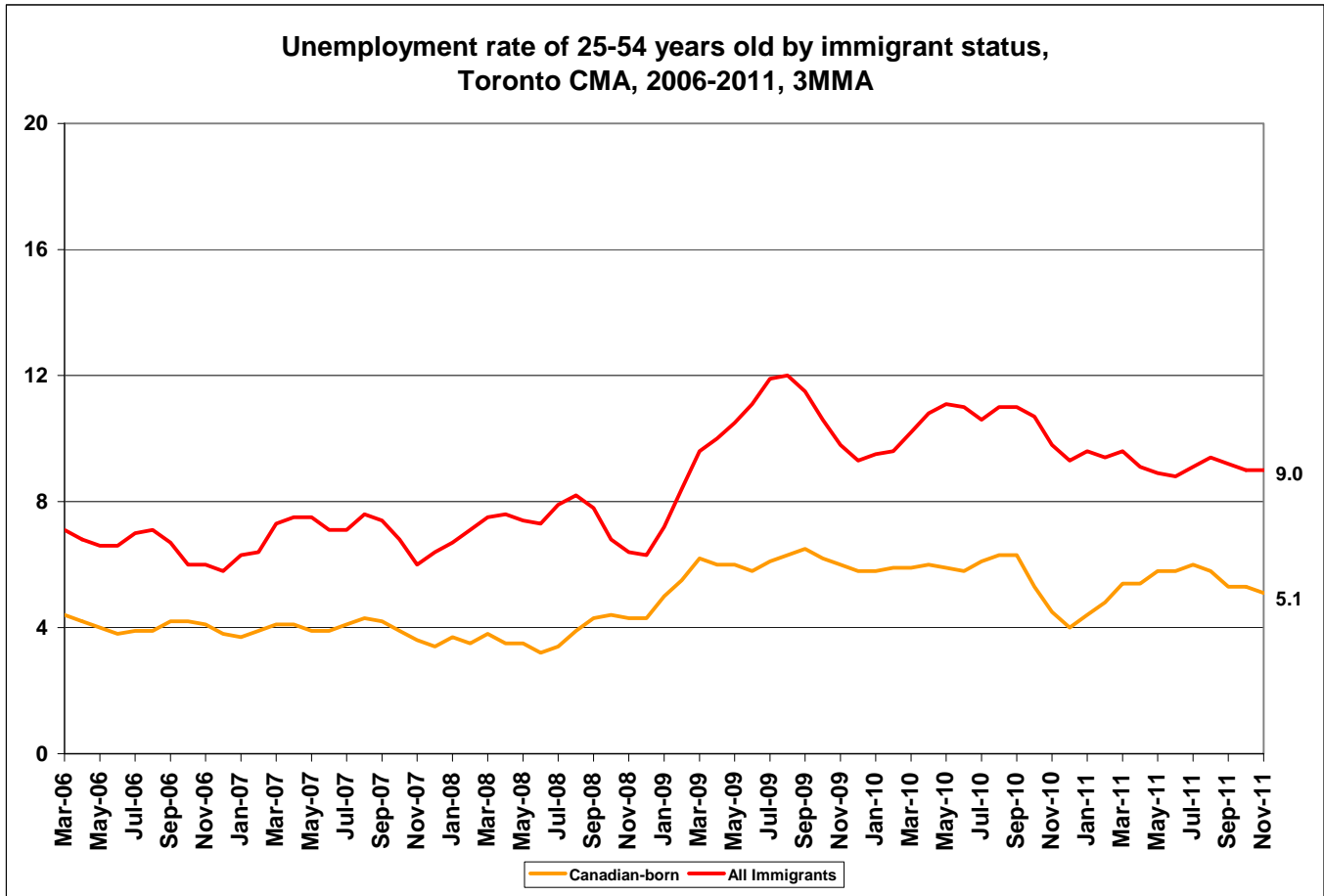


In November 2011, the participation rate of 25-54 year old Canadian-born living in the Toronto CMA was 88.5%, compared to 83.7% for all immigrants.

Since 2006, the participation rates among Canadian-born have remained within the range of 88%-92%. This has been consistently higher than the participation rate for immigrants, which has ranged between 80% and 86%. From October 2010 to March 2011, we saw a steep decline in overall participation of immigrants in the labour force. However, from April 2011, immigrants' participation rate has shown improvement.



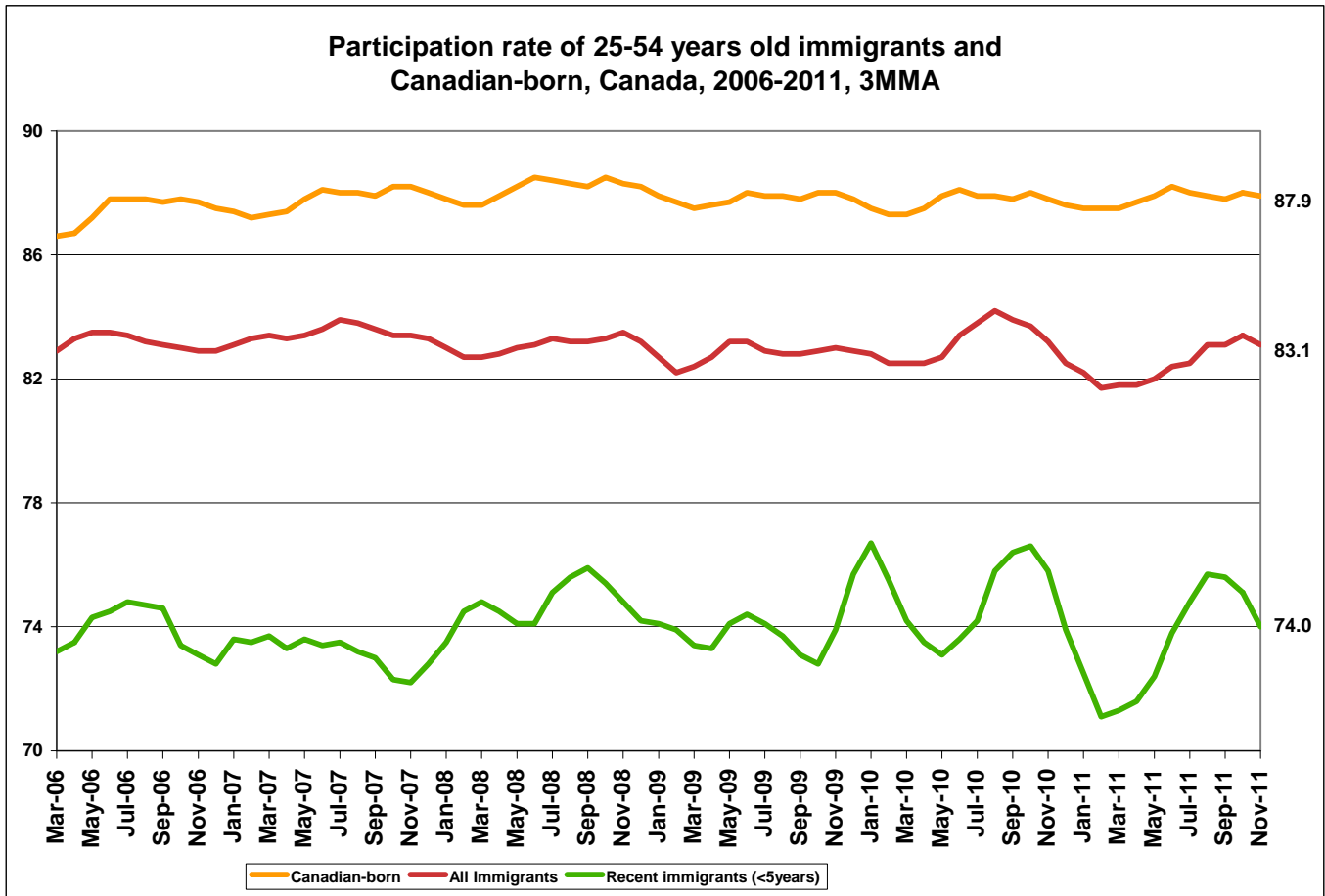
In November 2011, Canadian-born in Toronto had a slightly higher rate of full-time employment (88.9%) compared to all immigrants (88.3%). Over the last 5 years, Canadian-born and immigrants have had similar rates of full-time employment, fluctuating from month to month.



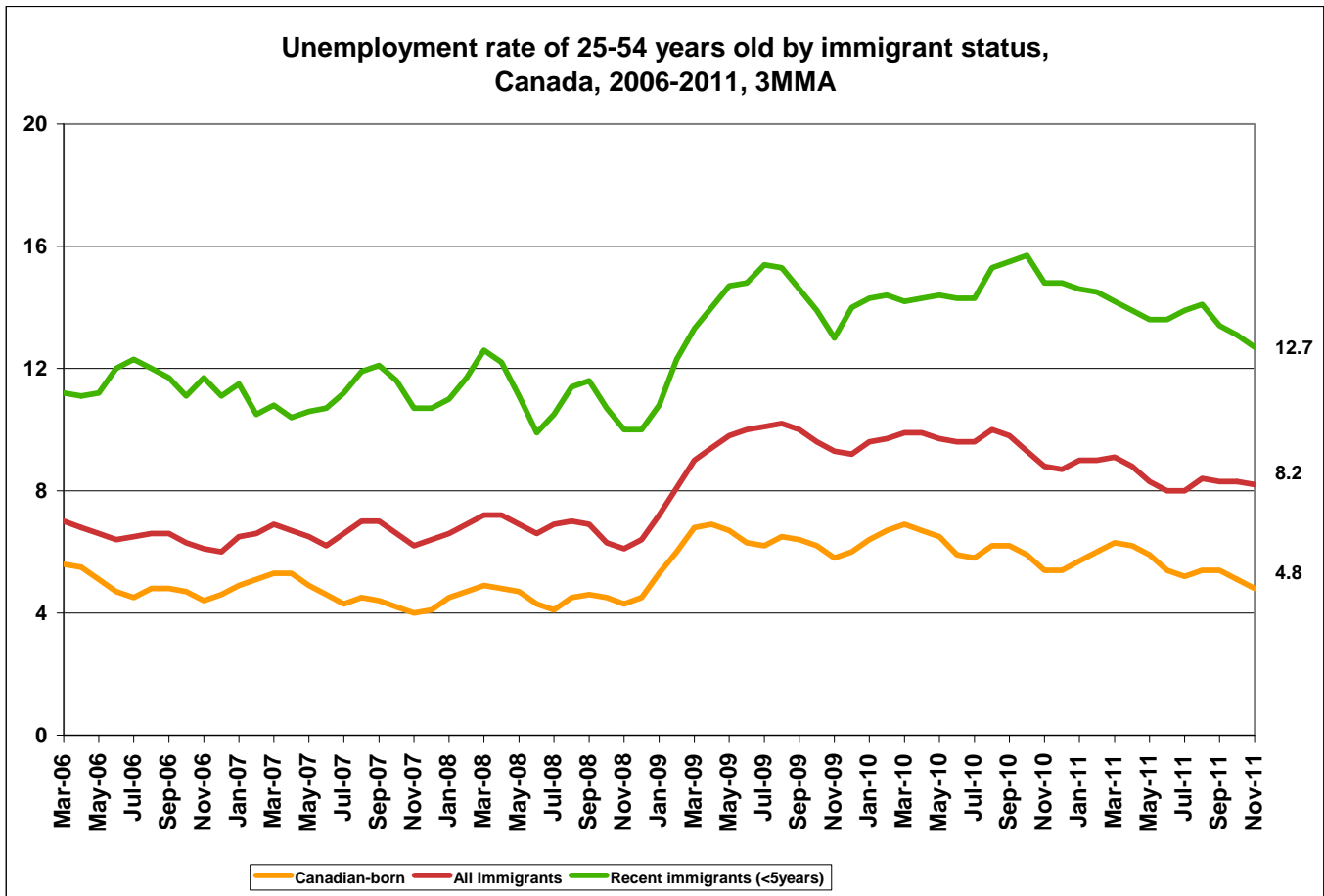
In November 2011, the unemployment rate for Canadian-born in the Toronto CMA was 5.1%, compared to 9.0% for immigrants. Immigrant unemployment rates have been consistently higher than Canadian-born since 2006, but the economic downturn starting in late 2008 appears to have widened that gap.¹ In November 2006, the gap was just 1.9 percentage points and had widened by November 2011 to 3.9 percentage points.

¹ For further analysis of the effects of economic recession on immigrants' labour market outcomes in Canada 2006-2011, see TIEDI Analytical Report 22: <http://www.yorku.ca/tiedi/pubreports22.html>.

Labour force data for Canada



In November 2011, the participation rate of all immigrants across Canada was 83.1% compared to 87.9% for Canadian-born. At 74.0%, recent immigrants (immigrants who landed within the last 5 years) had much lower participation rate than Canadian-born and all immigrants. The greater monthly variability in the participation rates of recent immigrants is likely attributable to a smaller sample size.



In November 2011 across Canada, the unemployment rate of Canadian-born was 4.8%, compared to 8.2% for all immigrants and 12.7% for recent immigrants.

Since 2006, Canadian-born have had consistently lower unemployment rates than immigrants. Recent immigrants have the highest rates among all groups: their unemployment rate has been consistently above 12% since early 2009.

Unemployment rates in November 2010 were slightly higher compared to rates in November 2011. In November 2010, unemployment rates were 5.4 % among Canadian-born, 8.8% among immigrants and 14.8% among recent immigrants.

Definitions & Notes

3-month moving average: Data from this report uses 3-month moving average (3MMA). Three-month moving averages are calculated by averaging a specific month with the two preceding ones (for example, May 2011 data is calculated using the averages for March, April and May 2011). Moving averages are used to reduce irregular variability in the data due to seasonal variations and the small sample sizes of the LFS.

Full-time employment: Proportion of individuals holding full-time employment among those who are currently employed or who last worked within the previous year. A person is considered to be full-time if his/her usual hours at the main job are 30 or more hours per week. When the number of hours worked at the main job is usually less than 30 hours per week then he/she is considered to be part-time.

Immigrants: Includes permanent residents and those who have been naturalized as Canadian citizens. Canadian citizens by birth and non-permanent residents (persons from another country who live in Canada and have a work or study permit, or are claiming refugee status, as well as family members living here with them) are not landed immigrants.

Labour force: Civilian non-institutional population 15 years of age and over who, during the survey reference week, were employed or unemployed. Prior to 1966, persons aged 14 and over were covered by the survey.

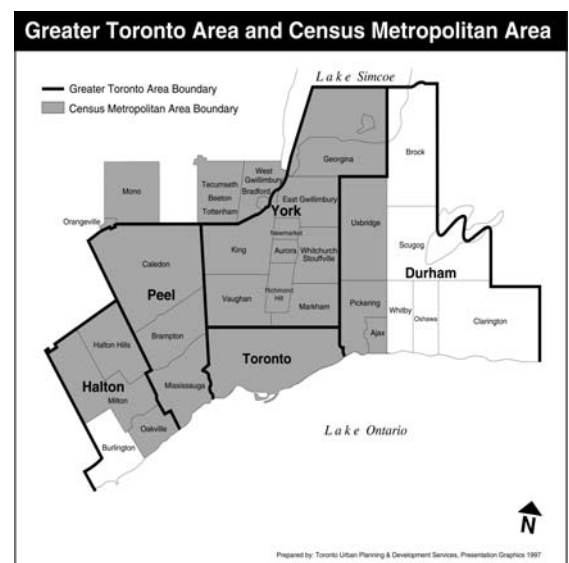
Non-permanent residents: Includes non-permanent residents, visa workers, temporary foreign workers, refugee claimants, students and their dependants, etc. Excludes Canadian-born and landed immigrants.

Participation rate: The participation rate represents the labour force expressed as a percentage of the population 15 years of age and over. The participation rate for a particular group (age, sex, etc.) is the labour force in that group expressed as a percentage of the population for that group.

Recent immigrants: Includes immigrants who landed within the last 5 years.

Toronto CMA: CMA stands for Census Metropolitan Area. The Toronto CMA is the grey-shaded area in Figure 1. It includes the City of Toronto, York Region, Peel Region and parts of Halton and Durham Regions. Other municipalities, such as New Tecumseth in southern Simcoe County and Mono Township in Dufferin County are also included in the Toronto CMA. CMAs are geographical areas mainly used by Statistics Canada.

Unemployment rate: The unemployment rate represents the number of unemployed persons expressed as a percentage of the labour force. The unemployment rate for a particular group (age, sex, etc.) is the number unemployed in that group expressed as a percentage of the labour force for that group.



Map by the City of Toronto

For more information, website: <http://www.statcan.gc.ca/pub/71-543-g/2010001/part-partie3-eng.htm>.