

The [Toronto Immigrant Employment Data Initiative](#) (TIEDI)'s Labour Force Update aims to provide up-to-date labour market data on immigrants. This monthly report relies on data from the Labour Force Survey (LFS) that is not available elsewhere free of charge. The report is broken down into sections covering labour market data for the Toronto CMA and Canada as a whole.

Please note that these data are not comparable to the data released by Statistics Canada in The Daily. Data from The Daily is seasonally adjusted, while these data are adjusted using a different methodology, the 3-month moving average. The greater monthly variability in the participation rates of recent immigrants is likely attributable to a smaller sample size.

TIEDI has access to Labour Force Survey data on unemployment/employment and participation by gender, education, age groups (15+ years old, 15-24, 25-54, 55+ years old), immigrant status, period of arrival (5 years or less, 5+ years, 5-10 years, and 10+ years in Canada), province and CMA of residence (Toronto, Montreal and Vancouver). We also have access to data on full-time/part-time employment by broad industry, gender, education, age groups (15+ years old, 15-24, 25-54, 55+ years old), immigrant status, period of arrival (5 years or less, 5+ years, 5-10 years, and 10+ years in Canada), province and CMA of residence (Toronto, Montreal and Vancouver).

Please contact the TIEDI Principal Investigator, Dr. Philip Kelly (pfkelly@yorku.ca), or the TIEDI Project Coordinator, Stella Park (pstella@yorku.ca) if you would like us to expand our labour market data analysis with more tables or graphs. TIEDI website address is <http://www.yorku.ca/tiedi/index.html>

Important Notice:

The Labour Force Survey is based on a sample of 53,000 households (representing approximately 100,000 individuals) across Canada, including 16,000 households in the province of Ontario. Due to the limited sample size, data on smaller groups have a higher coefficient of variation.

As a result, findings should be used with caution. Month-to-month variability in the Toronto data (compared to Canadian data) and in data on recent immigrants across Canada (compared to the larger groups of all immigrants and Canadian-born) should be attributed to data inaccuracies.

Starting with the release of LFS data for January 2011, Statistics Canada has adjusted its labour force estimates to be based on the 2006 Census population counts; sub-provincial estimates to be based on 2006 Census boundaries; industry estimates to be based on North American Industry Classification System 2007; and occupational estimates to be based on National Occupational Classification- Statistics 2006. Until December 2010, labour force estimates had been based on population data from the 2001 Census. Although these revisions have had some minor impacts on the LFS estimates, this report uses updated LFS data from 2006 to 2011. For more information about these changes to LFS data, see <http://www.statcan.gc.ca/bsolc/olc-cel/olc-cel?catno=71F0031X&lang=eng>

Sources:

Statistics Canada. 2012. Special tabulation, based on Labour Force Survey. Employment by industry, detailed age groups, sex, immigrant, type of work, Canada, provinces, 3MMA.

Statistics Canada. 2012. Special tabulation, based on Labour Force Survey. Labour force estimates by detailed age groups, sex, education level, country of birth, immigrant status, Canada, provinces, 3MMA.

Labour force data for the Toronto CMA

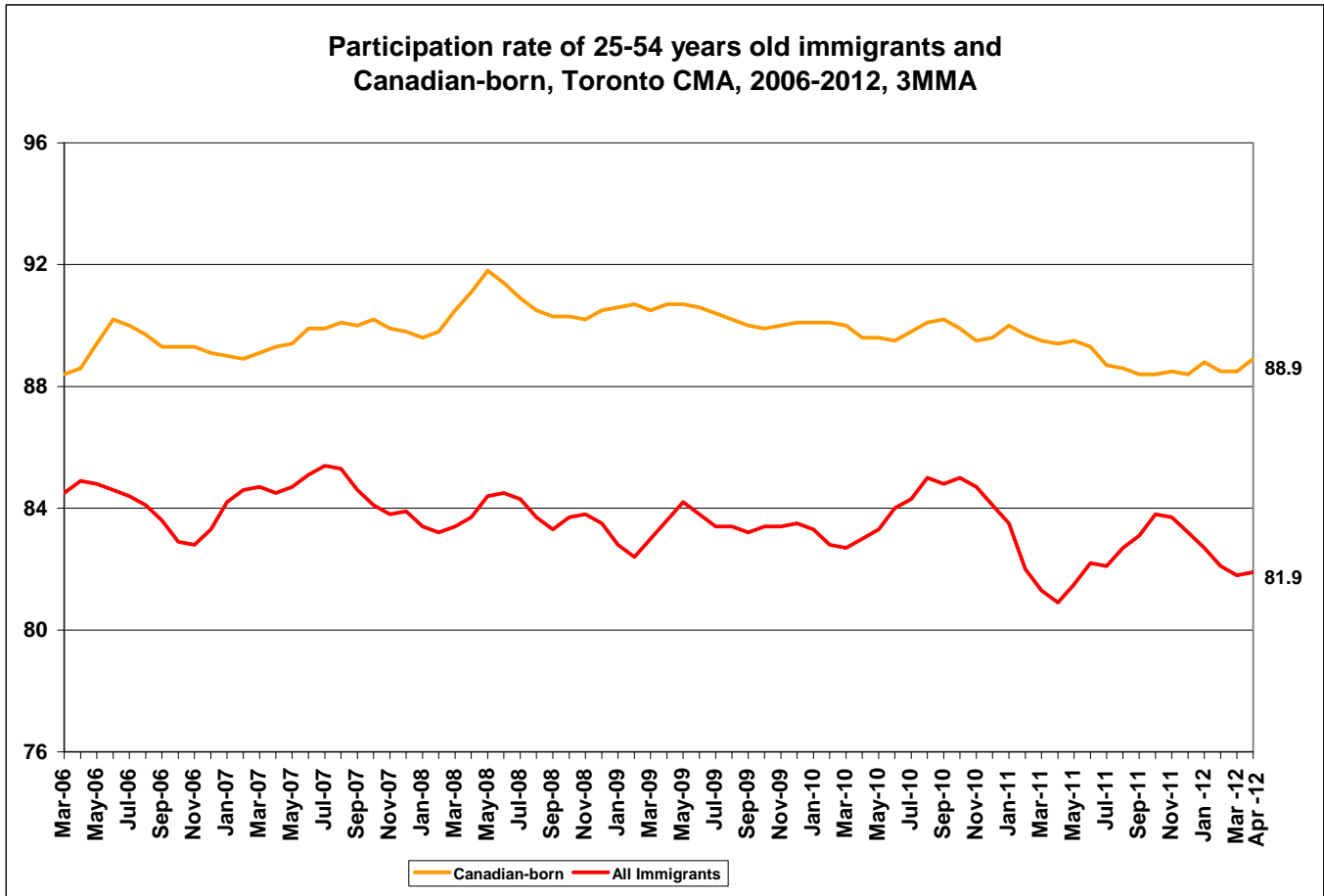
Employment (in thousands) by industry, among Canadian-born and All Immigrants,
Toronto CMA, Age 15+, April 2011 and 2012, 3MMA¹

	Canadian-born			All Immigrants		
	Apr. 2011	Apr. 2012	Difference in thousands	Apr. 2011	Apr. 2012	Difference in thousands
Goods-producing sector	215.1	198.7	-16.4	307.0	312.6	5.6
Agriculture	2.9	8.4	5.5	3.1	0.0	-3.1
Forestry, fishing, mining, oil and gas	2.8	4.1	1.3	0.0	0.0	0.0
Utilities	6.0	4.0	-2.0	5.0	9.5	4.5
Construction	89.4	88.8	-0.6	73.8	78.8	5.0
Manufacturing	114.0	93.6	-20.4	224.9	223.4	-1.5
Services-producing sector	1281.2	1242.3	-38.9	1070.8	1114.7	43.9
Trade	236.4	235.9	-0.5	185.0	184.7	-0.3
Transportation and warehousing	71.3	54.7	-16.6	82.2	84.3	2.1
Finance, insurance, real estate and leasing	167.2	132.5	-34.7	136.2	162.1	25.9
Professional, scientific and technical services	192.0	186.6	-5.4	132.3	143.3	11.0
Business, building and other support services	50.4	47.0	-3.4	76.2	79.0	2.8
Educational services	132.8	145.4	12.6	73.8	66.4	-7.4
Health care and social assistance	126.3	126.3	0.0	152.6	142.5	-10.1
Information, culture and recreation	121.4	123.3	1.9	66.6	49.7	-16.9
Accommodation and food services	64.2	66.2	2.0	76.2	96.5	20.3
Other services	51.7	57.1	5.4	55.8	68.5	12.7
Public administration	67.5	67.2	-0.3	33.8	37.8	4.0
Total	1496.4	1441.1	-55.3	1377.8	1427.2	49.4

¹Data from this report uses 3-month moving average (3MMA). Three month moving averages are calculated by averaging a specific month with the two preceding ones.

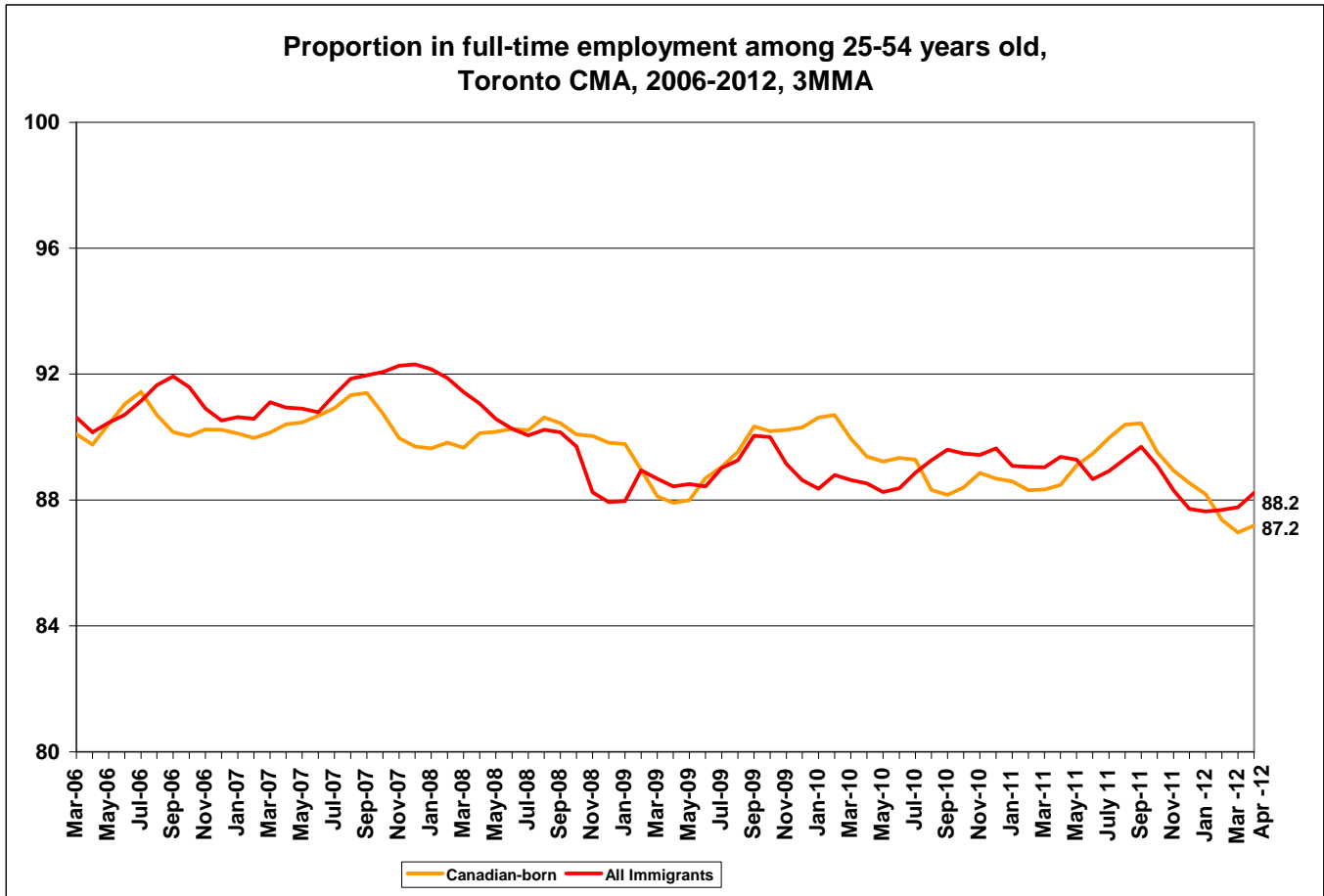
When comparing the Toronto CMA labour market in April 2011 and April 2012, immigrants gained 49,400 jobs while Canadian-born lost 55,300 jobs. For Canadian-born, 38,900 jobs were lost in the service-producing sector and 16,400 jobs in the goods-producing sector. Immigrants saw employment increases both in the service-producing sector (43,900 jobs) and in the goods-producing sector (5,600 jobs).

For immigrants, notable job gains were found in finance, insurance, real estate and leasing (25,900 jobs) and in accommodation and food services (20,300 jobs). Large job losses for immigrants were found in information, culture and recreation (16,900 jobs) and health care and social assistance (10,100 jobs). In contrast, for the Canadian-born, large job losses were found in finance, insurance, real estate and leasing (34,700 jobs), manufacturing (20,400 jobs), and transportation and warehousing (16,600 jobs).



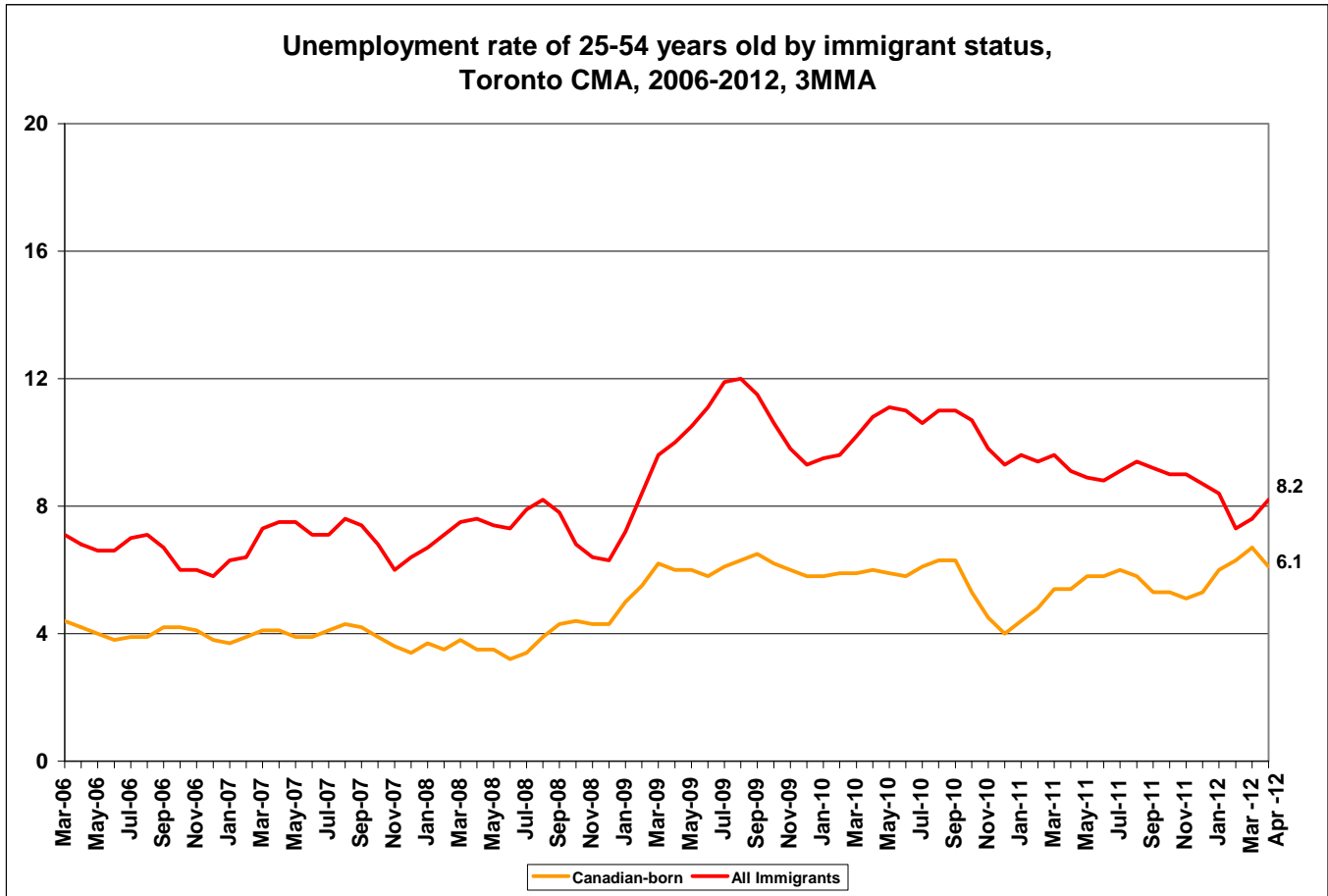
In April 2012, the participation rate of 25-54 year old Canadian-born living in the Toronto CMA was 88.9%, compared to 81.9% for all immigrants.

Since 2006, the participation rates among Canadian-born have remained within the range of 88%-92%. This has been consistently higher than the participation rate for immigrants, which has ranged between 80% and 86%.



In April 2012, immigrants in Toronto had a slightly higher rate of full-time employment (88.2%) compared to all immigrants (87.2%). Canadian-born and immigrants have had similar rates of full-time employment, fluctuating from month to month.

Overall, the proportion in full-time employment for immigrants and the Canadian-born has decreased in the past 6 years.

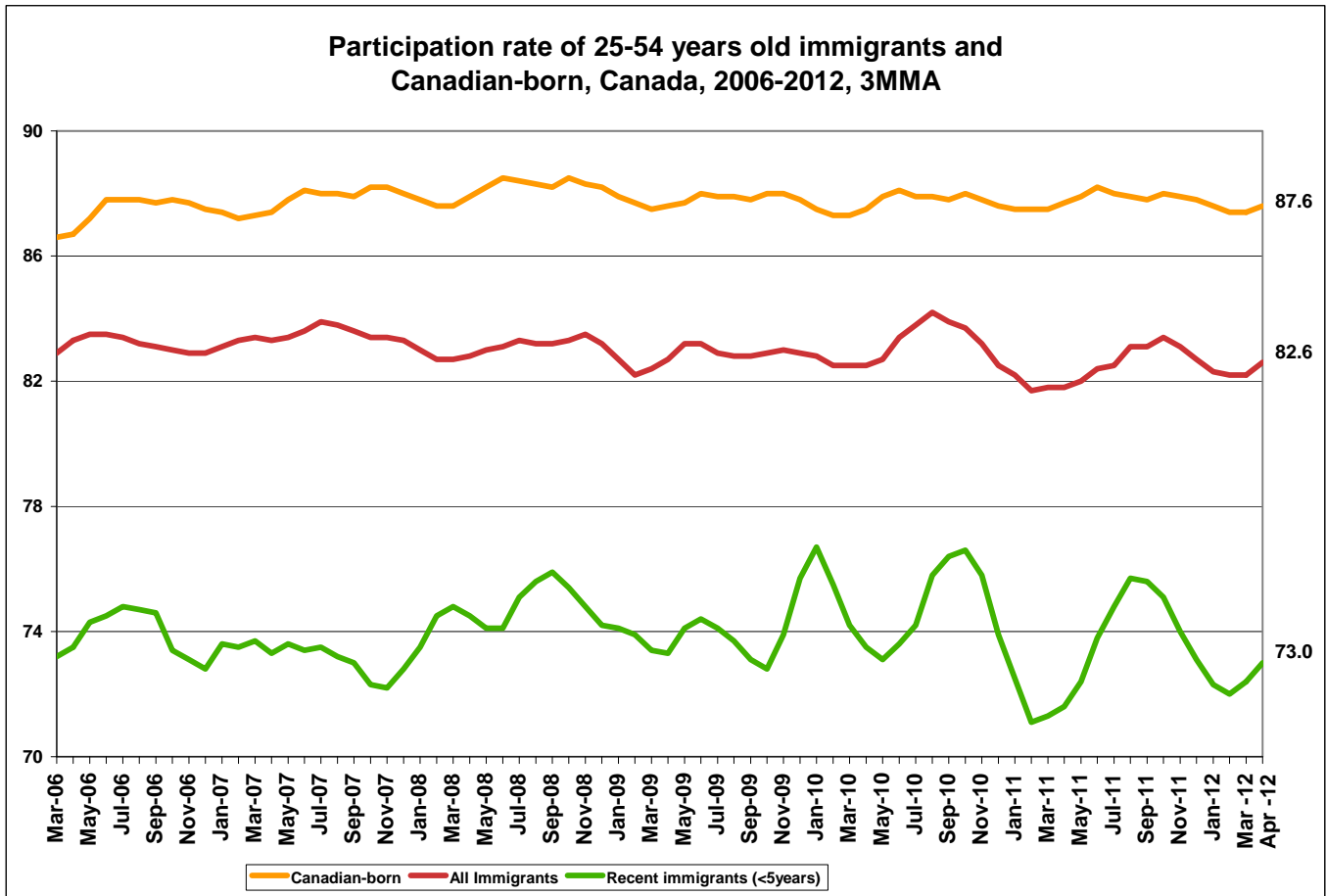


In April 2012, the unemployment rate for Canadian-born in the Toronto CMA was 6.1%, compared to 8.2% for immigrants.

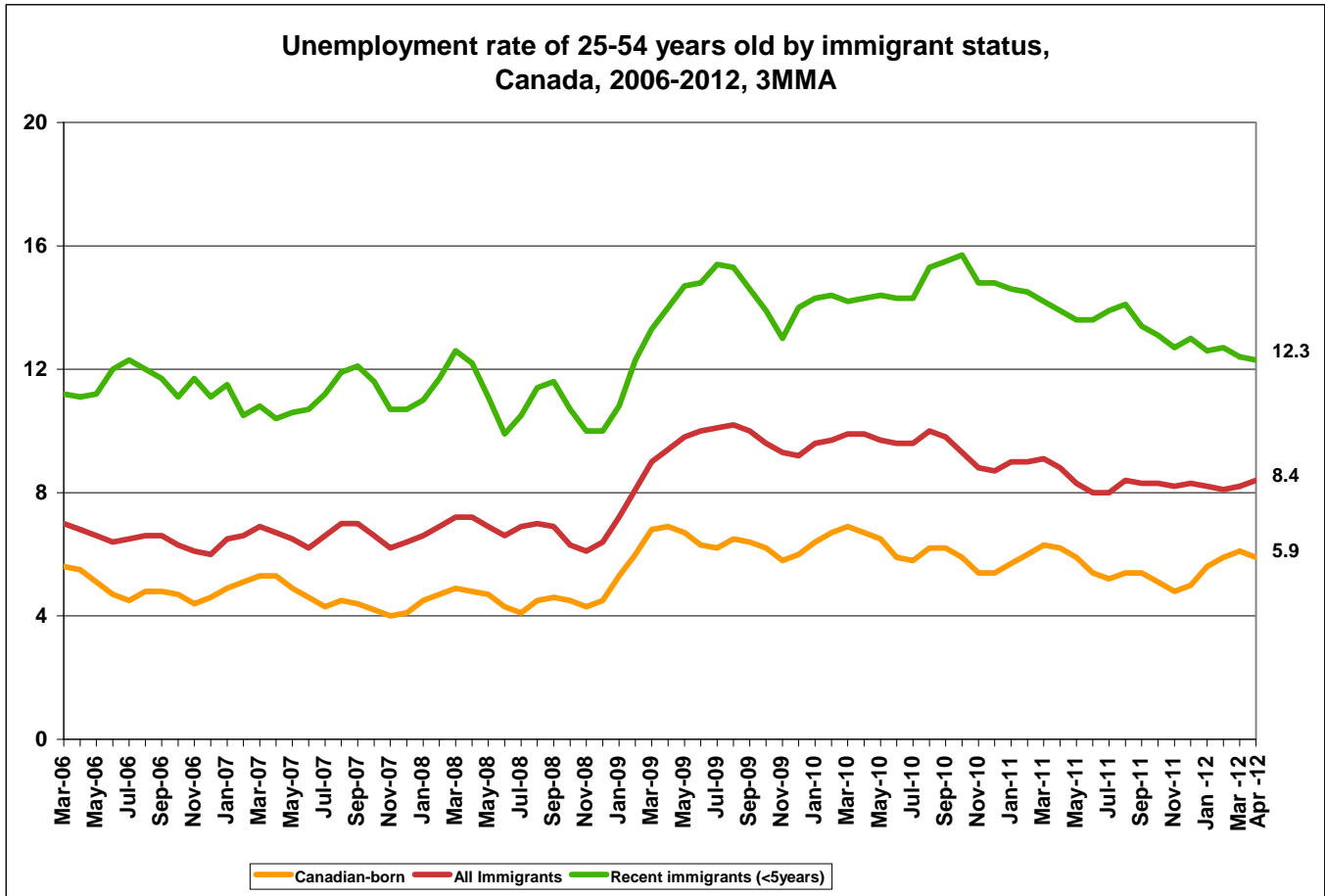
Immigrant unemployment rates have been consistently higher than Canadian-born since 2006, and this gap appear to have widened during the economic downturn starting in late 2008¹. By 2012, this gap in unemployment rate between immigrants and Canadian-born appears to be getting smaller.

¹ TIEDI report 22 has more details about how Canada’s recession affected the Canadian-born and immigrants’ labour market outcomes from 2006 to 2011. This report can be found in, <http://www.yorku.ca/tiedi/pubreports22.html>

Labour force data for Canada



In April 2012, the participation rate of all immigrants across Canada was 82.6 % compared to 87.6% for Canadian-born. At 73.0%, recent immigrants (immigrants who landed within the last 5 years) had much lower participation rate than Canadian-born and all immigrants. The greater monthly variability in the participation rates of recent immigrants is likely attributable to a smaller sample size.



In April 2012 across Canada, the unemployment rate of Canadian-born was 5.9%, compared to 8.4% for all immigrants and 12.3% for recent immigrants.

Since 2006, Canadian-born have had consistently lower unemployment rates than immigrants. Recent immigrants have the highest rates among all groups: their unemployment rate has been consistently above 12% since early 2009.

Unemployment rates in April 2011 were slightly higher compared to rates in April 2012. In April 2011, unemployment rates were 6.2 % among Canadian-born, 8.8% among all immigrants and 13.9% among recent immigrants.

Definitions & Notes

3-month moving average: Data from this report uses 3-month moving average (3MMA). Three-month moving averages are calculated by averaging a specific month with the two preceding ones (for example, May 2011 data is calculated using the averages for March, April and May 2011). Moving averages are used to reduce irregular variability in the data due to seasonal variations and the small sample sizes of the LFS.

Full-time employment: Proportion of individuals holding full-time employment among those who are currently employed or who last worked within the previous year. A person is considered to be full-time if his/her usual hours at the main job are 30 or more hours per week. When the number of hours worked at the main job is usually less than 30 hours per week then he/she is considered to be part-time.

Immigrants: Includes permanent residents and those who have been naturalized as Canadian citizens. Canadian citizens by birth and non-permanent residents (persons from another country who live in Canada and have a work or study permit, or are claiming refugee status, as well as family members living here with them) are not landed immigrants.

Labour force: Civilian non-institutional population 15 years of age and over who, during the survey reference week, were employed or unemployed. Prior to 1966, persons aged 14 and over were covered by the survey.

Non-permanent residents: Includes non-permanent residents, visa workers, temporary foreign workers, refugee claimants, students and their dependants, etc. Excludes Canadian-born and landed immigrants.

Participation rate: The participation rate represents the labour force expressed as a percentage of the population 15 years of age and over. The participation rate for a particular group (age, sex, etc.) is the labour force in that group expressed as a percentage of the population for that group.

Recent immigrants: Includes immigrants who landed within the last 5 years.

Toronto CMA: CMA stands for Census Metropolitan Area. The Toronto CMA is the grey-shaded area in Figure 1. It includes the City of Toronto, York Region, Peel Region and parts of Halton and Durham Regions. Other municipalities, such as New Tecumseth in southern Simcoe County and Mono Township in Dufferin County are also included in the Toronto CMA. CMAs are geographical areas mainly used by Statistics Canada.

Unemployment rate: The unemployment rate represents the number of unemployed persons expressed as a percentage of the labour force. The unemployment rate for a particular group (age, sex, etc.) is the number unemployed in that group expressed as a percentage of the labour force for that group.



Map by the City of Toronto

For more information, website: <http://www.statcan.gc.ca/pub/71-543-g/2010001/part-partie3-eng.htm>