

# An Evaluation of Human Services in York Region

**What we know**

**What we don't know**

**What we need to know**

# The York Infrastructure Project

Lucia Lo (PI)

Paul Anisef Ranu Basu Valerie Preston Shuguang Wang (CI)

Silvia D'Addario, James McLean, Ann Marie Murnaghan, Yinhuan Yuan (RA)

Etta Anisef (PM)

Acknowledge the support from:

Infrastructure Canada

Citizenship and Immigration Canada –The Ontario Region

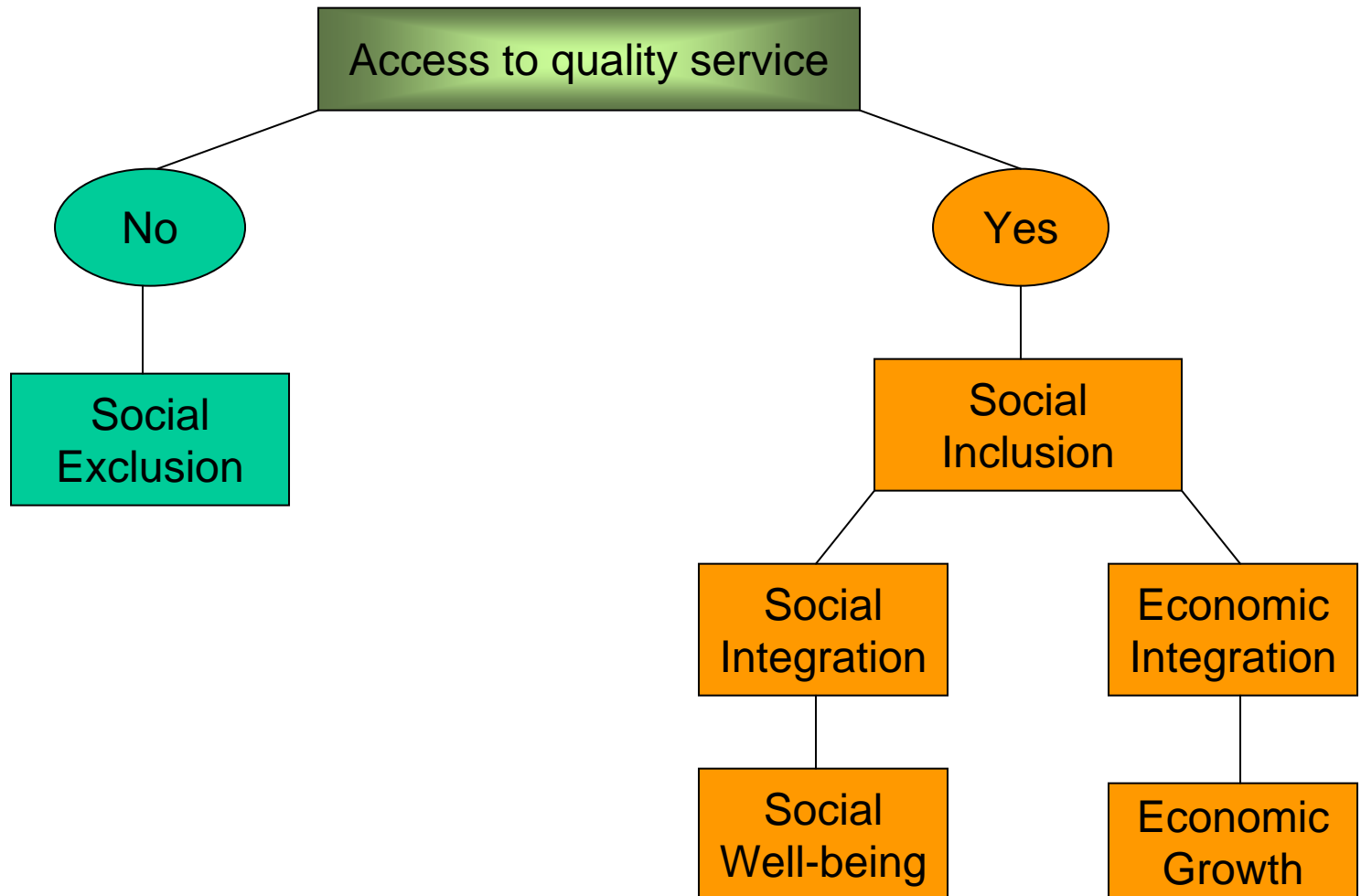
Office of VP Research and Innovation, York University

Our partners, and friends from York Region

# Purpose of the Research

- Address infrastructure needs in a rapidly changing suburban region
- Infrastructure refers to all services and facilities that have public benefits

# Rationale



# Coverage

<b>Human Services</b>	<b>Vulnerable Populations</b>		
	<b>Seniors (age 65+)</b>	<b>Low Income (below LICO)</b>	<b>Recent Immigrants (1996-2006)</b>
<b>Education</b>	X	X	X
<b>Employment</b>	X	X	X
<b>Housing</b>	X	X	X
<b>Settlement</b>			X

# Research Plan

<b>Objectives</b>	<b>Data Sources</b>	<b>Methodologies</b>
<p>To trace growth and distribution of vulnerability</p> <p>To establish profiles of three vulnerable groups</p>	<p>(1) Profile data for 1981 Census and 1991 Census available to academic researchers</p> <p>(2) Special tabulations of the 2001 Census</p> <p>(3) Special tabulations of the 2006 Census</p>	<p>Excel</p> <p>GIS</p>
<p>To identify locations and numbers of four types of human services</p>	<p>(4) Special tabulation from the 2006 CIVC database</p> <p>(5) School Boards in York Region</p> <p style="text-align: right;">→ N=1075</p>	<p>Excel</p> <p>GIS</p>
<p>To identify gaps in service provision</p>	<p>(3) and (4, 5)</p>	<p>GIS</p>
<p>To assess awareness, use and satisfaction of human services</p>	<p>(6) Survey of York Region population</p> <p style="text-align: right;">→ N=1541 (1095 random; 451 list)</p>	<p>SPSS</p>

# Vulnerability in York Region

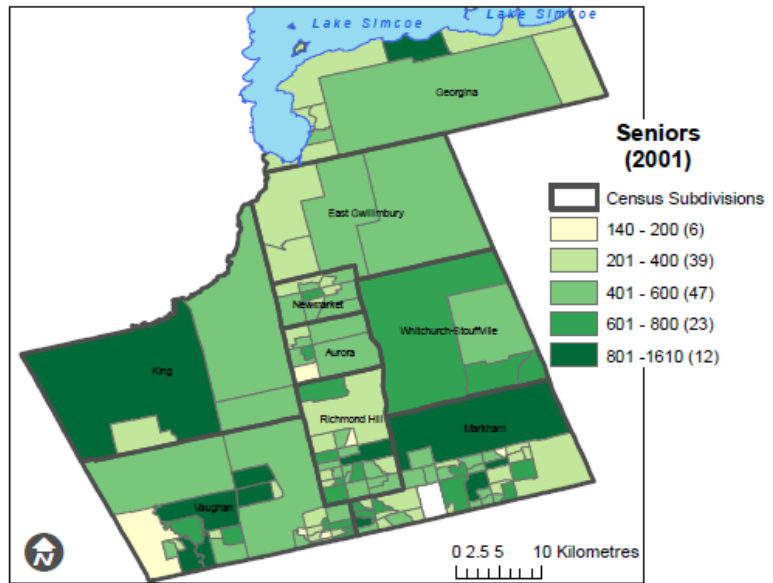
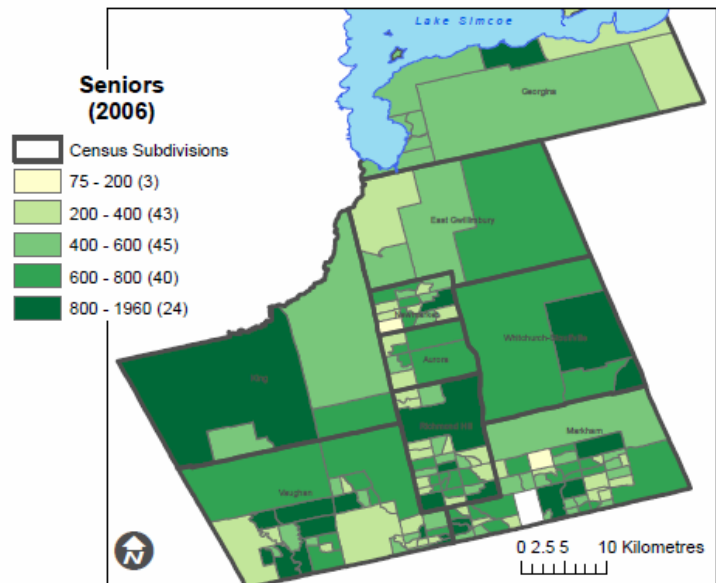
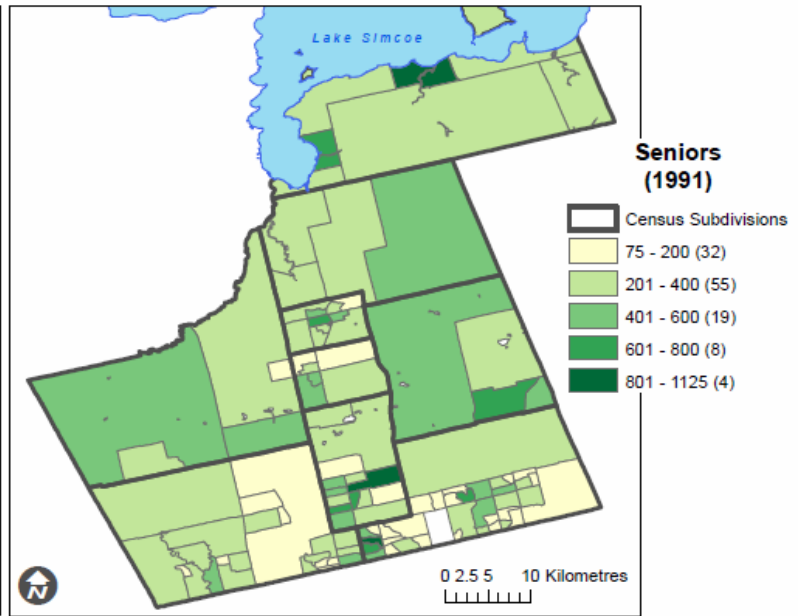
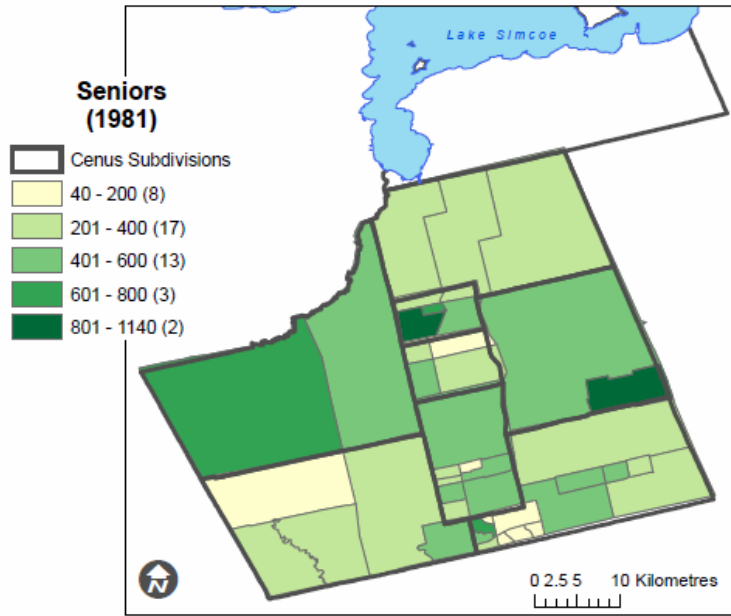
# Vulnerability is Growing

	1981		1991		2001		2001		2006		2006	
							Toronto				Toronto	
	N	%	N	%	N	%	N	%	N	%	N	%
Total Population	252,063	100	504,981	100	725,050	100	2,481,494	100	886,570	100	2,503,281	100
Seniors	16,605	6.6	35,560	7	63,790	8.8	319,405	12.9	87,620	9.9	333,730	13.3
Low Income	7,725	3.1	37,570	7.5	72,565	10	552,525	22.3	112,165	12.7	613,304	24.5
Recent Immigrants*	2,835	1.1	40,875	2.2	94,845	13.1	516,630	20.8	109,275	12.3	109,310	18.2

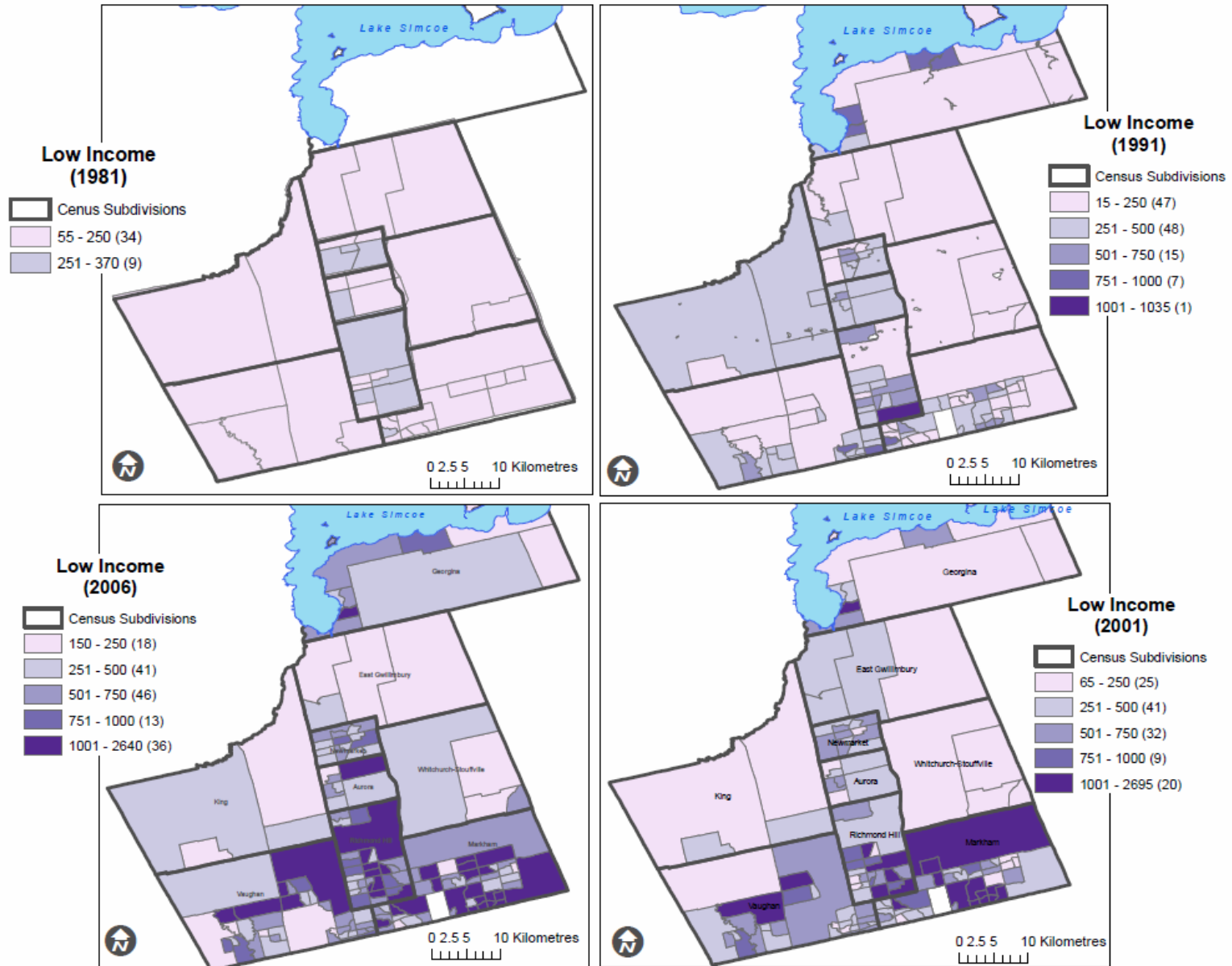
Notes: In 1981 recent immigrants refers to 3 years before the Census; in 1991, 2001 and 2006 the period is 10 years.

Sources: Statistics Canada: 1981 and 1991 Census Profile Data; 2001 Special Tabulations for YISP, EO1048-3A, 2006 Special Tabulations for YISP, EO1204R-2.

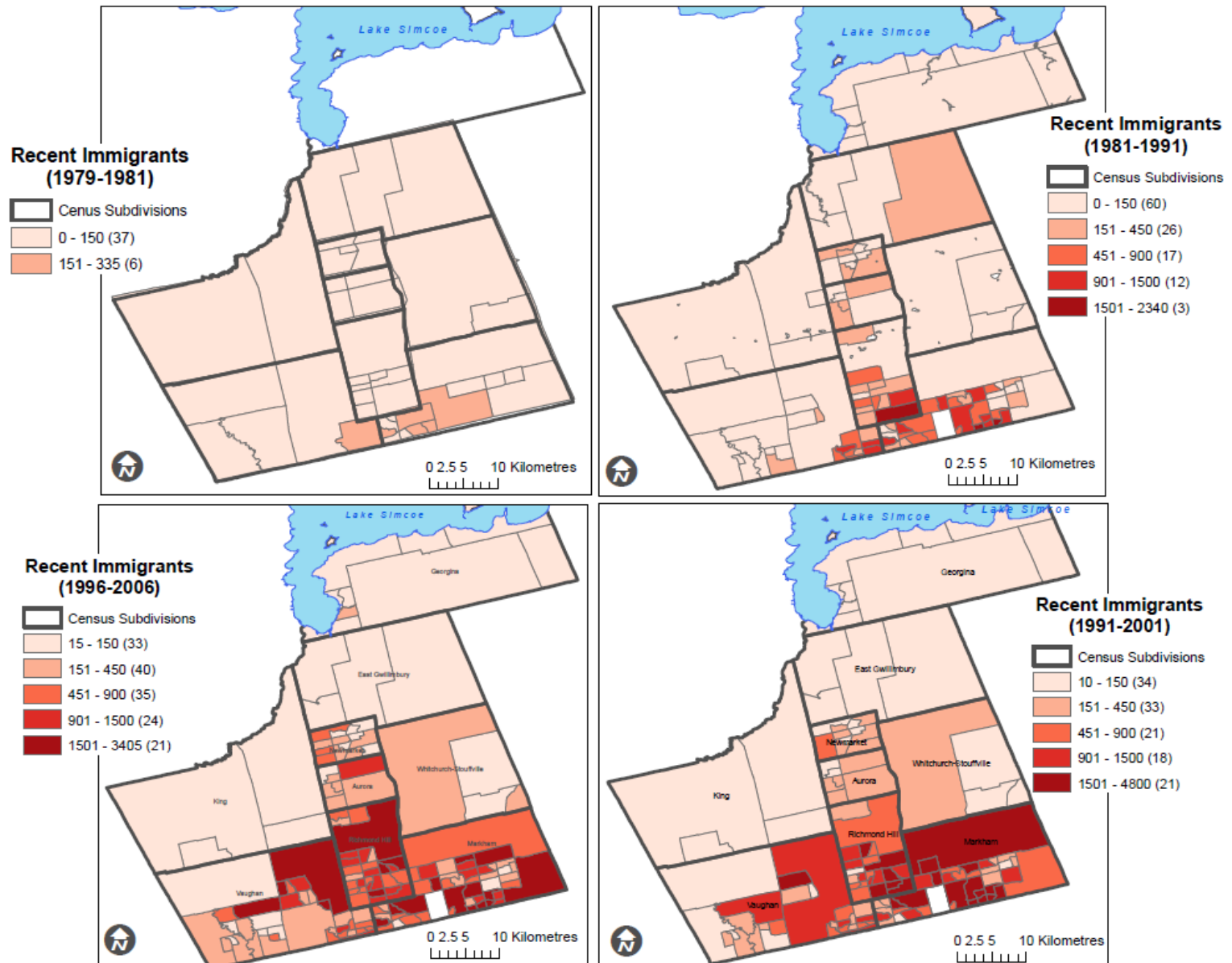
# Temporal Growth: Seniors



# Temporal Growth: Low Income

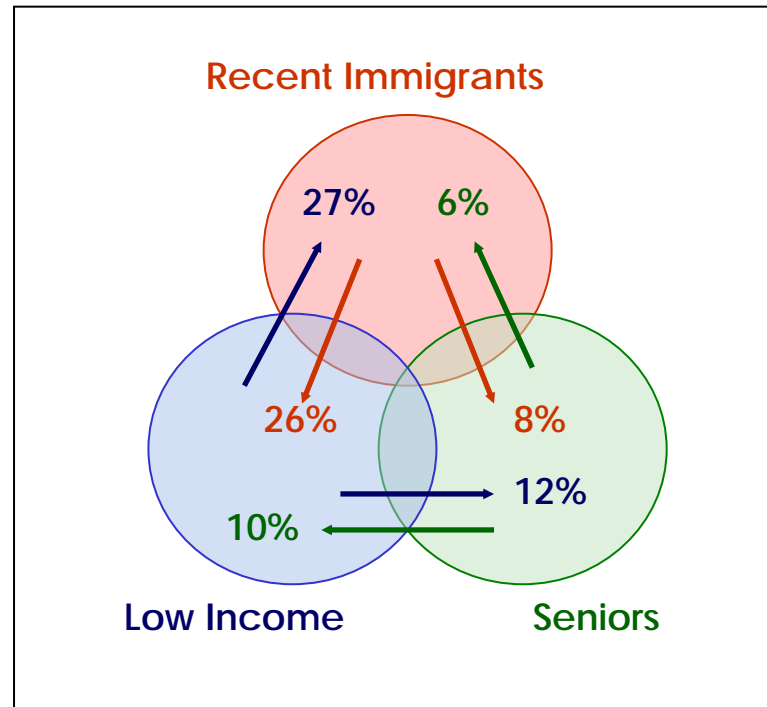


# Temporal Growth: Recent Immigrants



Sources: Statistics Canada, 1983, 1993, 2003, 2008; York Region, 2006. Produced by: Ann Marie Murnaghan, March 1, 2009.

# Intersecting Vulnerabilities



	Recent Immigrants		Low Income		Seniors	
	N	%	N	%	N	%
<b>Recent Immigrants</b>	109,275	100.0	29,580	26.4	7,065	8.1
<b>Low Income</b>	29,580	27.1	112,165	100.0	10,700	12.2
<b>Seniors</b>	7,065	6.5	10,700	9.5	87,620	100.0

# Locations of Multi-vulnerability

