

# Housing Services for Vulnerable Populations in York Region

## Proportion of regional population by municipality

	<b>Regional Population</b>	<b>Proportion of Regional Population</b>
<b>York Region</b>	892,712	100
<b>Aurora</b>	47,629	5.3
<b>Markham</b>	261,573	29.3
<b>Newmarket</b>	74,295	8.3
<b>Richmond Hill</b>	162,704	18.2
<b>Vaughan</b>	238,866	26.8
<b>Rest of York Region</b>	107,645	12.1

# Vulnerable populations by municipality

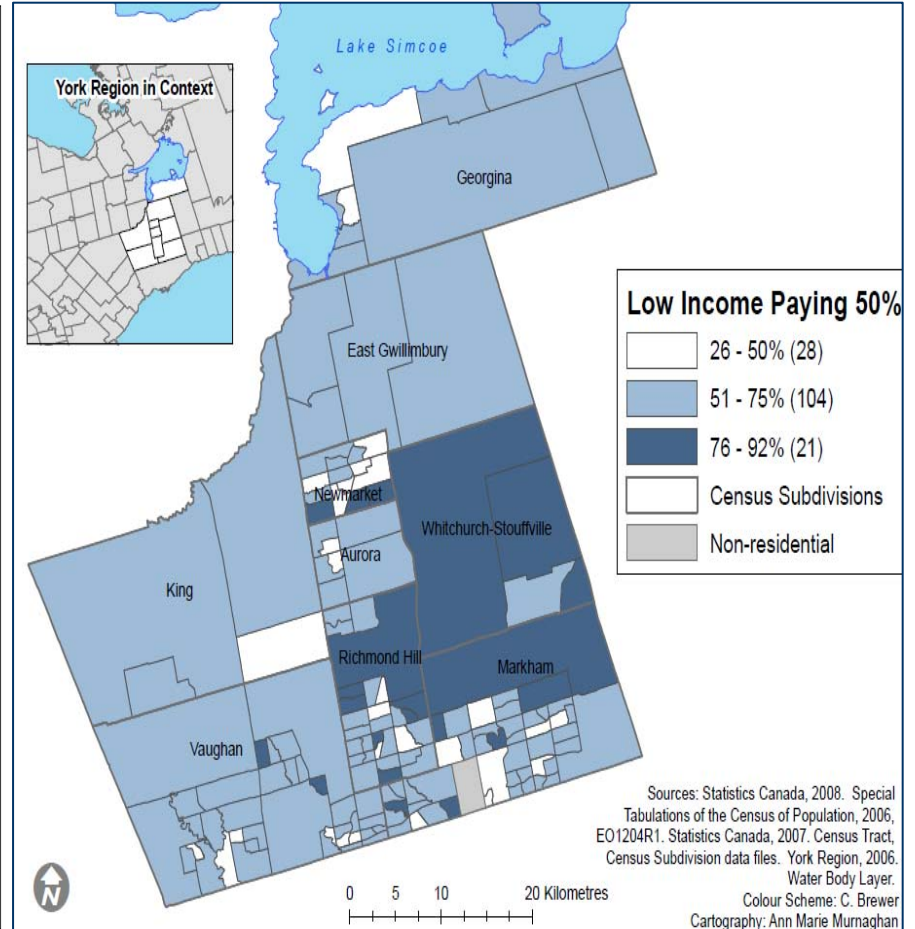
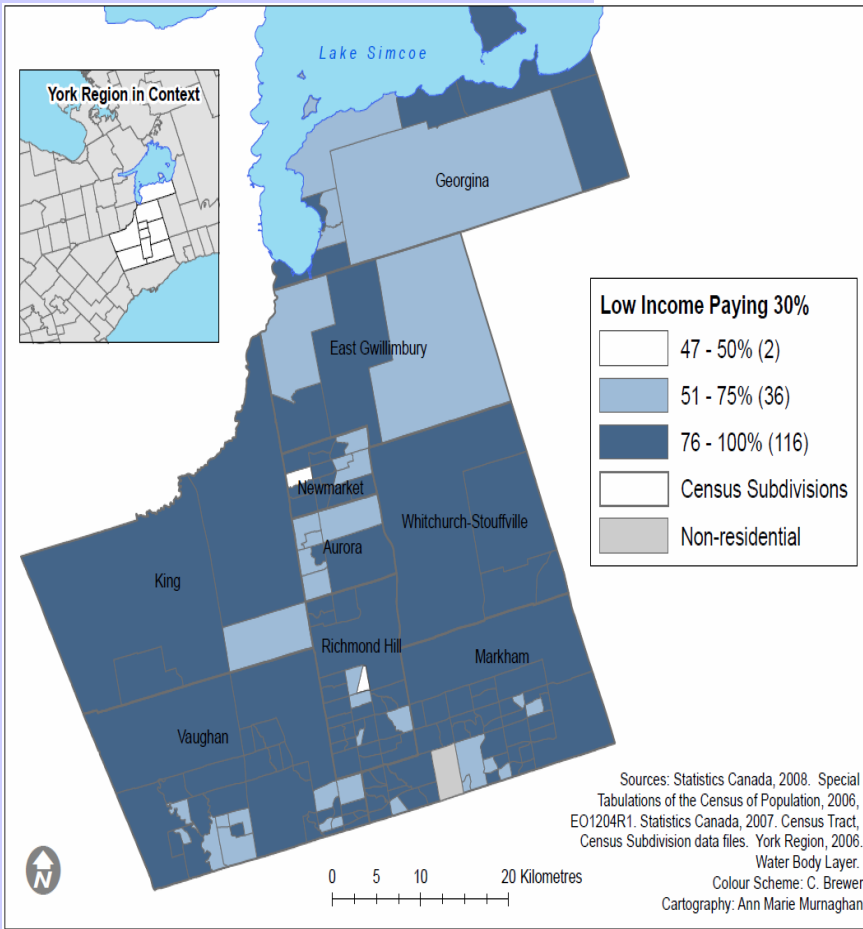
	Seniors		Recent Immigrants		Low Income	
	N	%	N	%	N	%
<b>York Region</b>	91,870	100	109,195	100	112,098	100.0
<b>Aurora</b>	4,230	4.6	3,065	2.8	3,828	3.4
<b>Markham</b>	27,850	30.3	45,775	41.9	41,834	37.3
<b>Newmarket</b>	7,075	7.7	3,835	3.5	7,175	6.4
<b>Richmond Hill</b>	16,385	17.8	29,125	26.7	25,538	22.8
<b>Vaughan</b>	23,280	25.3	25,480	23.3	25,280	22.6

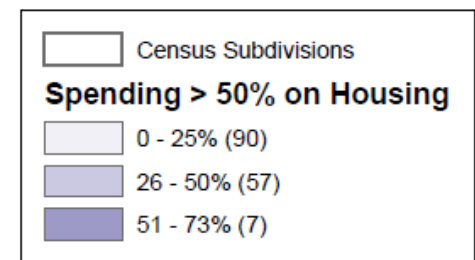
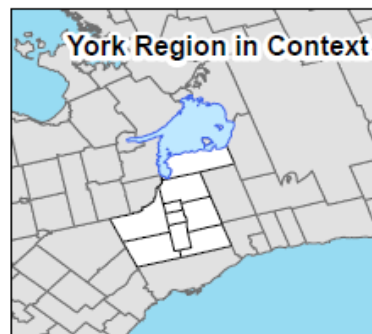
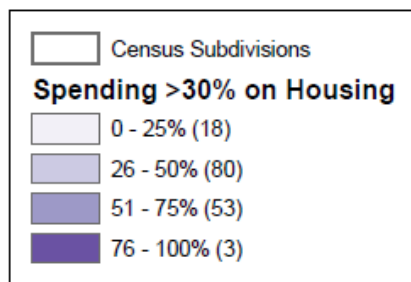
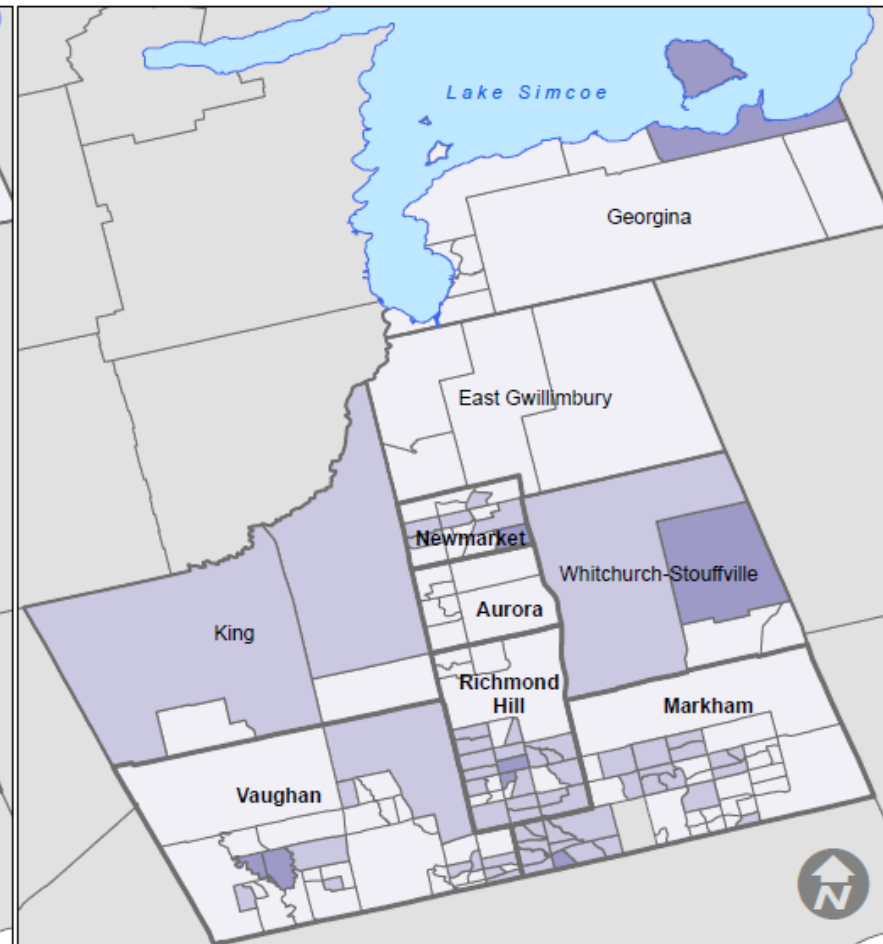
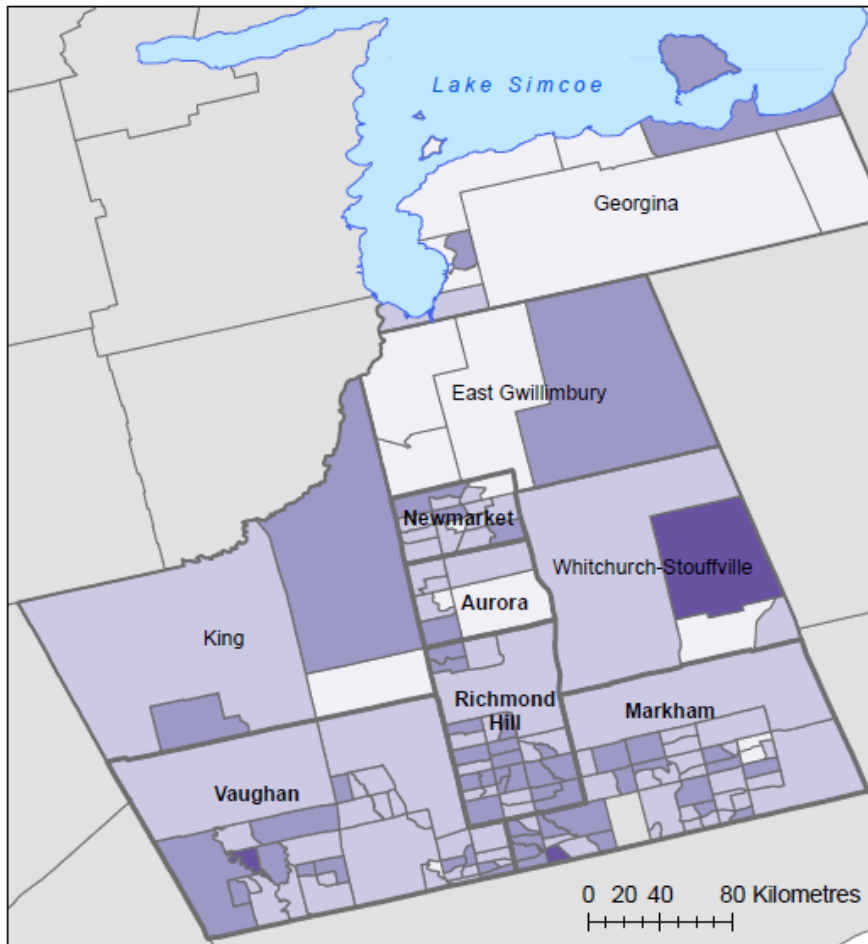
## Housing Demand by Vulnerable Group

	<b>Low- Income</b>	<b>Recent Immigrants</b>	<b>Seniors</b>
Average household size	3.9	4.4	3
Median household income	\$23,478	\$67,456	\$66,289
Percent LICO	100	27.1	12.2

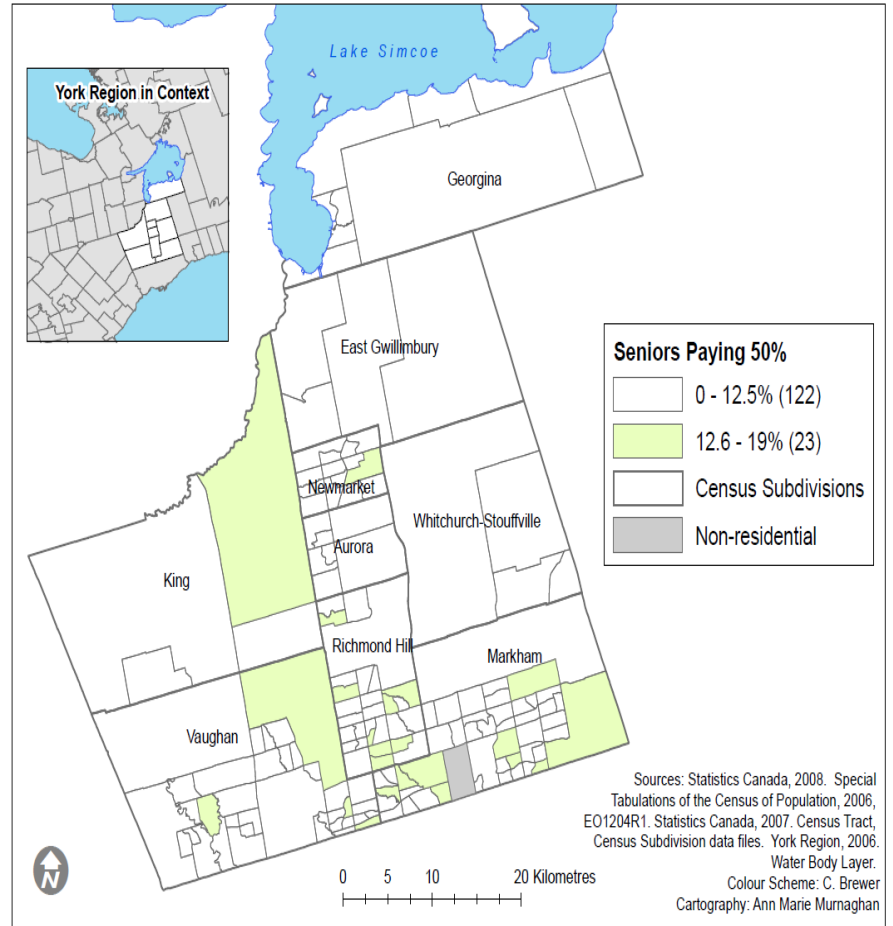
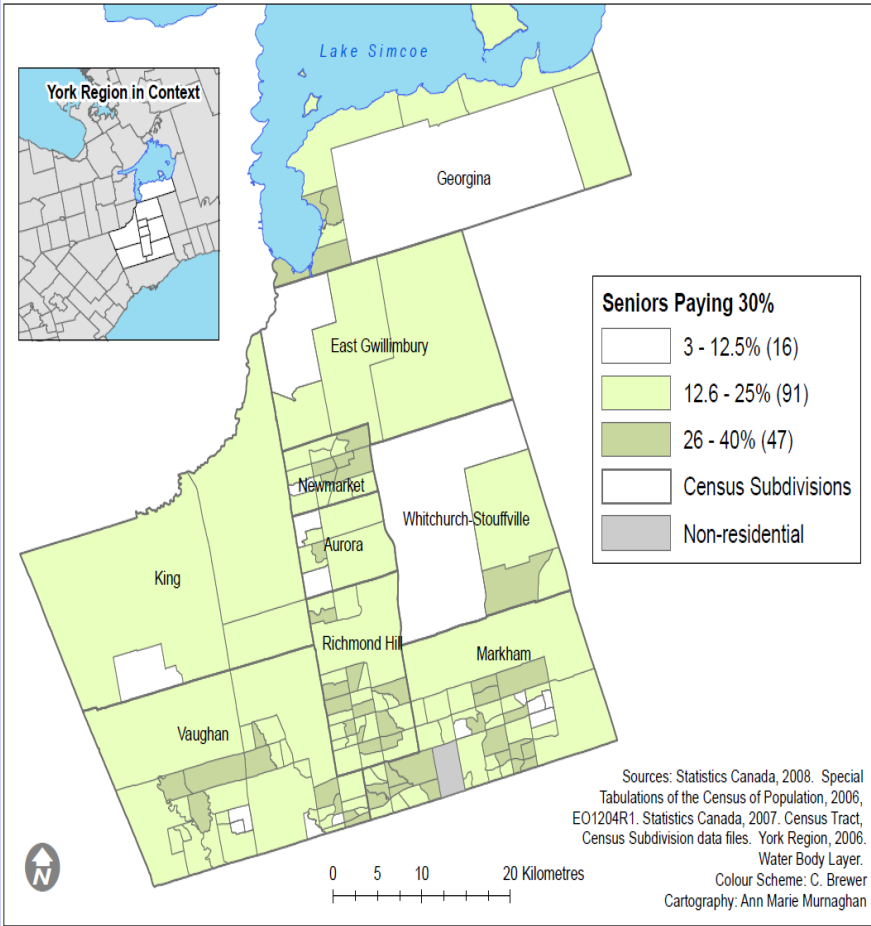
## Housing Costs by Vulnerable Group

	<b>Low- Income</b>	<b>Recent Immigrants</b>	<b>Seniors</b>
<b>Average gross rent</b>	\$893	\$1,057	\$906
<b>Average owner's major payments</b>	\$1,395	\$1,830	\$915
<b>Spending over 30% on housing</b>	80.8	46.7	22.6
<b>Spending over 50% on housing</b>	62.6	25.4	8.5





Sources: Statistics Canada, 2008. Special Tabulations of the Census of Population, 2006, EO1204R1. Statistics Canada, 2007. Census Tract, Census Subdivision data files. York Region, 2006. Water Body Layer. Colour Scheme: C. Brewer, Cartography: Ann Marie Murnaghan



## Housing services for each vulnerable population in York Region

	Seniors	Low-Income Seniors	Recent Immigrants	Low-Income
<b>Independent living*</b>	4	46	0	37
<b>Assisted living**</b>	19	0	0	0
<b>Congregated living***</b>	28	0	0	4
<b>Other Housing Services****</b>	2	2	0	9

\* Independent living: dwelling units- private, social (co-operative, nonprofit), life lease housing

\*\* Assisted living: retirement centres

\*\*\* Congregated living: long term, domiciliary hostels, special care, group homes, shelter

\*\*\*\* Other: housing help centres, housing access ctr, seniors social workers etc.



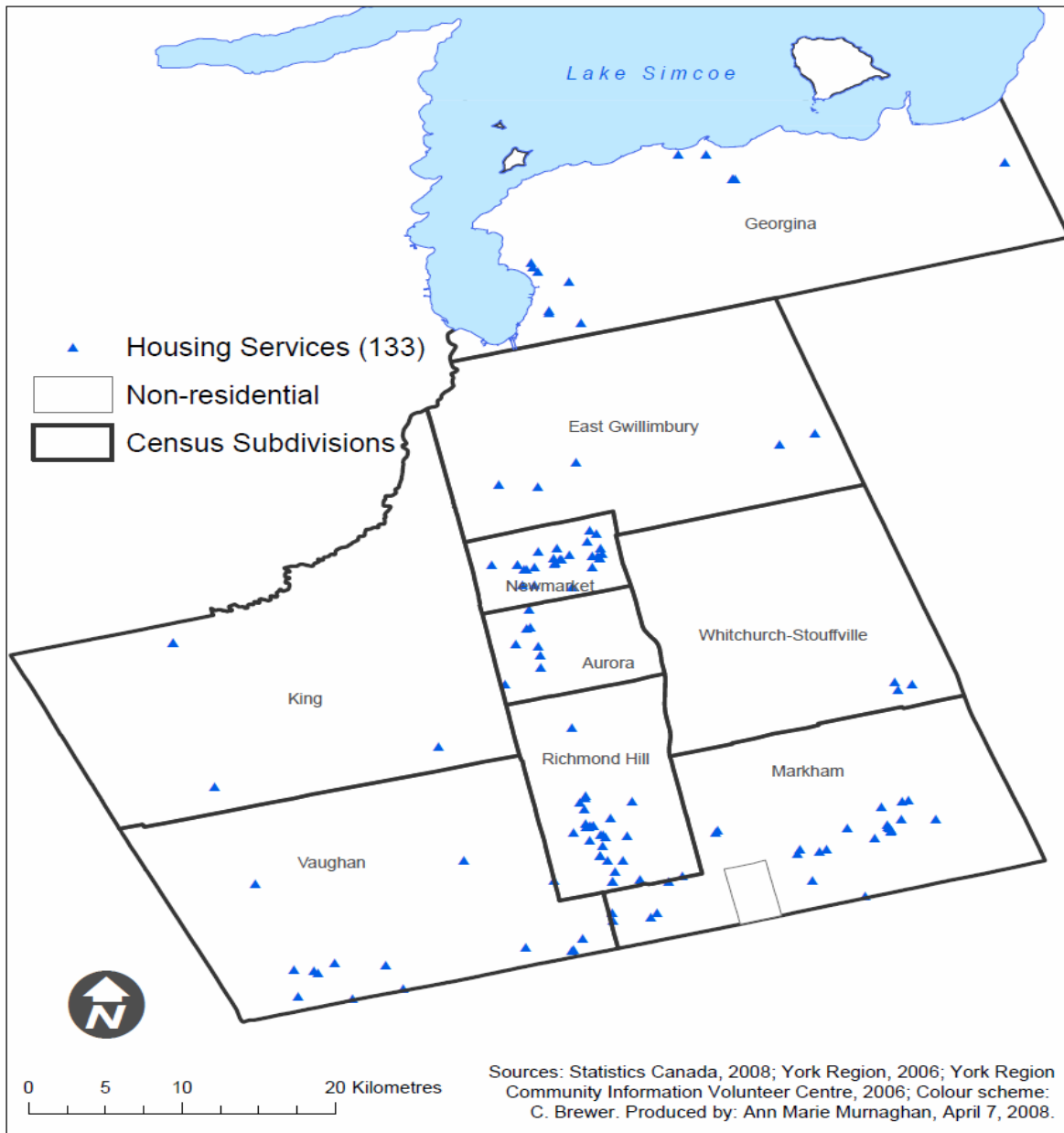
## Proportion of vulnerable population by municipality

	Seniors		Recent Immigrants		Low Income	
	N	%	N	%	N	%
<b>York Region</b>	91,870	100	109,195	100	112,098	100
<b>Aurora</b>	4,230	4.6	3,065	2.8	3,828	3.41
<b>Markham</b>	27,850	30.3	45,775	41.9	41,834	37.32
<b>Newmarket</b>	7,075	7.7	3,835	3.5	7,175	6.4
<b>Richmond Hill</b>	16,385	17.8	29,125	26.6	25,538	22.78
<b>Vaughan</b>	23,280	25.3	25,480	23.3	25,280	22.55
<b>Rest of York Region</b>	13,050	14.2	1,915	1.7	8,443	7.53

## Proportion of services for each vulnerable population by municipality

	Seniors		Recent Immigrants		Low-Income		Total	
	N	%	N	%	N	%	N	%
<b>York Region</b>	97	100	0	0	50	100	147	100
<b>Aurora</b>	9	9.3	0	0	4	8	13	100
<b>Markham</b>	15	15.5	0	0	8	16	23	100
<b>Newmarket</b>	20	20.6	0	0	15	30	35	100
<b>Richmond Hill</b>	21	21.6	0	0	11	22	32	100
<b>Vaughan</b>	11	11.6	0	0	5	10	16	100
<b>Rest of York Region</b>	21	21.6	0	0	9	18	21	100

# Housing Services in York Region



## Total Population per Social Housing Unit

	<b>Region Population</b>	<b>Social Housing Units</b>	<b>Population Per Unit</b>
<b>York Region</b>	892,712	8,225	108.5
<b>Aurora</b>	47,629	459	103.7
<b>Markham</b>	261,573	1,367	191.3
<b>Newmarket</b>	74,295	1,522	48.8
<b>Richmond Hill</b>	162,704	3,161	51.4
<b>Vaughan</b>	238,866	927	257.6
<b>Rest of York Region</b>	270,304	789	342.5

## Vulnerable Population Per Social Housing Unit

	Seniors		Recent Immigrants		Low Income	
	Population	Population Per Unit	Population	Population Per Unit	Population	Population Per Unit
<b>York Region</b>	91,870	18.5	109,195	NA	112,098	32.1
<b>Aurora</b>	4,230	26	3,065	NA	3,828	12.9
<b>Markham</b>	27,850	37.1	45,775	NA	41,834	67.9
<b>Newmarket</b>	7,075	9.5	3,835	NA	7,175	9.2
<b>Richmond Hill</b>	16,385	8.4	29,125	NA	25,538	21.2
<b>Vaughan</b>	23,280	50.7	25,480	NA	25,280	54.0
<b>Rest of York Region</b>	13,050	20.1	1,915	NA	8,443	60.7

NA - There is no social housing targeting immigrants.

## **Users of Housing Services**

- 76 people used housing services
- 75% of users are immigrants
- 2/3 had household income below \$50,000
- 73.9% satisfied or very satisfied

## Access to Housing Services

	Seniors		Total Low-Income
	Assisted Living	Independent Living	
<b>York Region</b>	30.6	48.7	51.2
<b>Aurora</b>	36.6	31.1	63.6
<b>Markham</b>	39.2	53	43.6
<b>Newmarket</b>	65.8	82.7	92.8
<b>Richmond Hill</b>	53.5	62.6	64.3
<b>Vaughan</b>	6.2	44.1	42.9
<b>Rest of York Region</b>	6.3	17.9	33.5

# Conclusions

- Affordability is an issue for low-income households and recent immigrants
- Region needs more affordable housing units:
  - For recent immigrants and low-income households
  - In southern York Region
  - Near current locations of vulnerable populations
- Vulnerable populations need more housing supports