



# Lassonde School of Engineering (LE)



<http://lassonde.yorku.ca/>



# Agenda



1. LE Overview
2. BC Resources
3. LE Resources
4. LE Initiatives



# Things to Keep in Mind



- Slides will be posted on Bethune College website
- Web and email links provided for ease of access to information





# Lassonde School of Engineering:

## Overview

<http://lassonde.yorku.ca/>



# Lassonde School of Engineering Explained



- A new professional school revolving around creation of Renaissance Engineers™
- Important aspects are citizenship and entrepreneurship

# Existing Departments



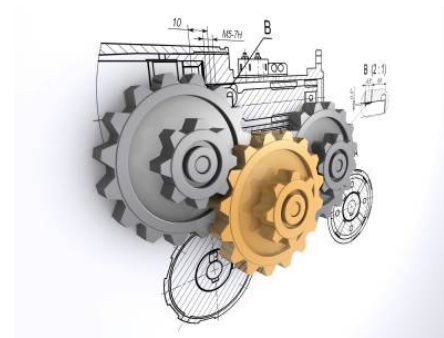
- Earth and Space Science and Engineering (ESSE) <http://yorku.ca/esse/>
- Electrical Engineering and Computer Science (EECS) <http://lassonde.yorku.ca/electrical-engineering-computer-science>



# New Departments



- Civil Engineering <http://lassonde.yorku.ca/civil-engineering>
- Mechanical Engineering <http://lassonde.yorku.ca/mechanical-engineering>
- Civil and mechanical engineering programs will be launched in September 2014



# Earth and Space Science and Engineering Department Programs



- Earth and Atmospheric Science
- Geomatics Engineering
- Space Engineering
- Space Science



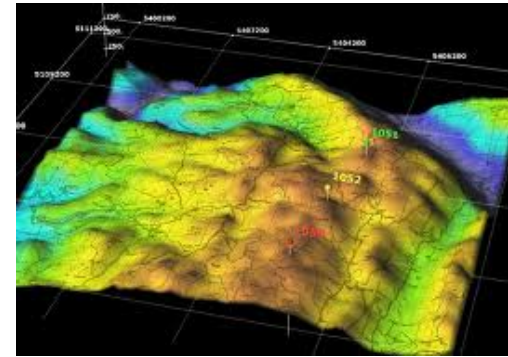
[http://www.yorku.ca/esse/undergrad\\_all.htm](http://www.yorku.ca/esse/undergrad_all.htm)



# Earth and Space Science and Engineering Department Certificate Programs



- Geographic Information Systems (GIS) and Remote Sensing
- Meteorology





# Electrical Engineering and Computer Science Department Programs

- Computer Science
- International Computer Science
- Computer Security
- Digital Media



<http://lassonde.yorku.ca/eecs-undergrad>



# Electrical Engineering and Computer Science Department Programs (cont.)

- Computer Engineering
- Electrical Engineering
- Software Engineering



# Additional Current LE Programs



- Engineering (undecided)
  - Opportunity to specialize after first year (common first year for all engineering programs)



<http://lassonde.yorku.ca/engineering-undecided-beng>

# Additional Current LE Programs (cont.)



- Engineering and International Development Studies
  - Dual degree (BEng and BA)
  - Five years to complete both degrees in any engineering program

<http://lassonde.yorku.ca/engineering-undecided-beng>



# Bethune College (BC):

## Resources

<http://lassonde.yorku.ca/>



# Bethune College Explained



- College affiliation for LE students (Lassondians)
- Offers useful services for both academic and career support
- Offers wide range of clubs and organizations

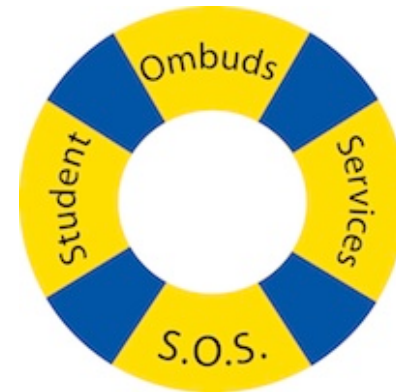


<http://bethune.yorku.ca/>

# Student Ombuds Services (SOS)



- Peer Tutoring
- Peer-Assisted Study Sessions (PASS)
- Class Representatives
- Peer Mentoring
- Peer Advising
- Seminars



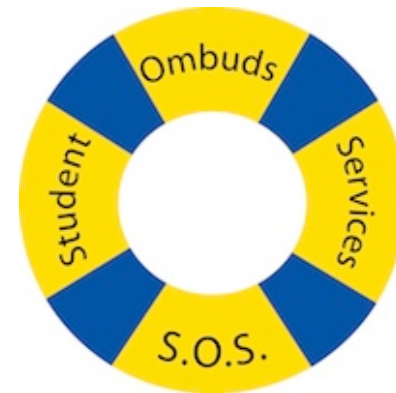
<http://bethune.yorku.ca/sos/>



# SOS – Important Things to Know



- All services are optional but highly recommended
- All services are free



<http://bethune.yorku.ca/sos/>

# SOS Peer Tutoring



- One-on-one assistance
- Offered for core math and science courses including:
  - MATH 1013, 1014, 1019
  - BIOL 1000, 1001
  - CHEM 1000, 1001
  - PHYS 1010, 1410, 1420
  - CSE 1030, 1520

<http://bethune.yorku.ca/tutoring/>

# SOS Peer Tutoring (cont.)



- Peer Tutors are upper-year students who have succeeded in particular courses
- Peer Tutors assist students in learning key concepts and solving problems

<http://bethune.yorku.ca/tutoring/>

# SOS Peer Tutoring (cont.)



- Weekly hours based on course
- Monday-Friday, 2:30-6:30 pm
- Located in Bethune College Study Hall (BC 102F) and Life Sciences Learning Common (LSB 104)
- Contact email: [bctutor@yorku.ca](mailto:bctutor@yorku.ca)

<http://bethune.yorku.ca/tutoring/>

# SOS Peer-Assisted Study Sessions (PASS)



- Group-oriented studying
- Offered for core math and science courses including:
  - MATH 1013, 1014, 1300, 1310
  - BIOL 1000, 1001
  - CHEM 1000, 1001
  - PHYS 1010, 1420
  - CSE 1020, 1030

<http://bethune.yorku.ca/pass/>

# SOS Peer-Assisted Study Sessions (PASS) (cont.)



- PASS leaders are upper-year students who have succeeded in particular courses
- PASS leaders *facilitate* understanding of key concepts, create mock tests, and help students strengthen their study skills

<http://bethune.yorku.ca/pass/>

# SOS Peer-Assisted Study Sessions (PASS) (cont.)



- Scheduled 2 x 90-min sessions per week
- Located in BC 203, BC 230, BC 323
- Contact email: [bcpass@yorku.ca](mailto:bcpass@yorku.ca)

<http://bethune.yorku.ca/pass/>

# SOS Class Representatives



- Students enrolled in core engineering, math, and science courses represent fellow classmates
- Courses offering this initiative include:
  - ENG 1000
  - MATH 1013, 1014
  - BIOL 1000, 1001
  - CHEM 1000, 1001
  - CSE 1020, 1030

<http://bethune.yorku.ca/classreps/>



# SOS



## Class Representatives (cont.)

- Class Reps liaise between course instructors and students
  - Provide general feedback and bring any concerns that arise to the attention of the course instructor

<http://bethune.yorku.ca/classreps/>



# SOS

## Class Representatives (cont.)

- Initiative strengthens professor-student connections
- Vision to improve student learning and performance
- Contact email: [bccr@yorku.ca](mailto:bccr@yorku.ca)

<http://bethune.yorku.ca/classreps/>

# SOS Peer Mentoring



- Helps first-year students transition and adapt to university life
- Peer Mentors are trained and successful upper-year students
- Incoming students matched with a Peer Mentor before September classes begin

<http://bethune.yorku.ca/mentoring/>



# SOS Peer Mentoring (cont.)



- Peer Mentors play important roles during Academic Orientation, including leading campus tours
- Peer Mentors available during school year to answer questions, give advice, and direct students to further assistance
- Contact email: [bcmentor@yorku.ca](mailto:bcmentor@yorku.ca)

<http://bethune.yorku.ca/mentoring/>

# SOS Peer Advising



- Multi-faceted resource centre
- Peer Advisors
  - Direct students to course assistance and campus services
  - Provide help or referrals for course selection and for understanding program requirements

<http://bethune.yorku.ca/advising/>

# SOS Peer Advising (cont.)



- Peer Advisors also
  - Provide information on graduate studies and career pathways, including prerequisites and admission processes
  - Organize career-related seminars
- Located in BC 208, open weekdays 10am-4pm
- Contact email: [bcpa@yorku.ca](mailto:bcpa@yorku.ca)

<http://bethune.yorku.ca/advising/>

# Bethune College Seminars



- Seminars offered by:
  - SOS
  - Career Centre
  - Learning Skills
  - Library



- Offered throughout fall and winter terms on Wednesday afternoons/evenings
- Located in BC 203, BC 320, and LSB 103

<http://bethune.yorku.ca/events/>

# SOS Seminars



- Career-related seminars including:
  - Research & volunteer opportunities
  - Professional schools
  - Future planning including:
    - What to do with a BSc degree
    - What to do with a BEng degree





# Career Centre Seminars



- Seminars on job-related skills including:
  - Resumé and cover letter writing
  - Finding a part-time job

<http://bethune.yorku.ca/events/>

# Learning Skills Seminars



- Seminars aimed to improve academic performance including:
  - Time management
  - Math and science problem solving skills



<http://bethune.yorku.ca/events/>

# Library Seminars



- Seminars aimed to improve written communication and research skills including :
  - Lab report writing
  - Power Searching in Web of Science



# Bethune College on Facebook



- Page called “Bethune College Academic Community”
  - Up-to-date info on academic support programs
  - Notifications for opportunities of involvement and their deadlines, including PASS leader applications



<https://www.facebook.com/BethuneCollegeAcademicCommunity>

# Bethune College on YU Connect



**YU connect** Get Involved. Get Connected. Get Recognized.

- Organization called “Bethune College Peer Team”
  - Info on SOS programs
  - Postings of academic events, including Meet the Profs



<https://yorku.collegiatelink.net/organization/BethunePeerMentoring>

# Bethune College Council (BCC)



- Student government that represents all Bethune students
- Organizes social events and academic programs, and supports affiliated student organizations
- Located in BC 122

<http://lassonde.yorku.ca/clubs-organizations>

# LE Student Organizations



- Computing Student's Hub
- Digital Media Students Association
- Engineering Society
- Geomatics Club
- Institute of Electrical and Electronic Engineers (IEEE) YU Student Branch



<http://lassonde.yorku.ca/clubs-organizations>

# LE Student Organizations (cont.)



- Robo Gals
- Robot Fighting Club
- York Atmospheric Science Club
- York University Rover Team



<http://lassonde.yorku.ca/clubs-organizations>





# Lassonde School of Engineering:

## Resources

<http://lassonde.yorku.ca/>



# Resource Branches



- Lasonde Student Centre
- Academic advising
- Industry connection
- Financial information



<http://lassonde.yorku.ca/advising>

# Lassonde Student Centre



- Academic advising
- Student clubs support
- Recruitment Activities, including Lassonde Ambassador Program
- Faculty Mentoring

[ask@lassonde.yorku.ca](mailto:ask@lassonde.yorku.ca)

416-650-8215



# Lassonde Student Centre (cont.)



- General Inquiries
- Petitions and Appeals
- Location: LAS 1012  
suite of offices
- Hours M, R, F 8:30 – 4
- Hours T & W 8:30 – 6



[ask@lassonde.yorku.ca](mailto:ask@lassonde.yorku.ca)  
416-650-8215

# Academic Advising



- New and continuing students in **Earth and Atmospheric Science**, **Space Science**, and **all engineering programs** should go to Lassonde Student Centre

[ask@lassonde.yorku.ca](mailto:ask@lassonde.yorku.ca)

416-650-8215



# Academic Advising (cont.)



- For **Computer Science, International Computer Science, Computer Security, and Digital Media** majors:
  - *New students* should go to Lassonde Student Centre
  - *Continuing students* should go to Electrical Engineering & Computer Science Office (LAS 1003)

[ask@lassonde.yorku.ca](mailto:ask@lassonde.yorku.ca)

416-650-8215



# Industry Connection



- Technology Internship Program (TIP)
  - LE programs being offered this are:
    - Computer, Geomatics, Software, and Space Engineering
    - Computer Science and Security
    - Digital Media

<http://lassonde.yorku.ca/technology-internship-program>

<http://www.yorku.ca/careers/internships/technology.htm>

# Industry Connection (cont.)



- Details of Technology Internship Program
  - 4, 8, 12, or 16 month paid positions
  - Placement possible for third year full time Honours students
  - Connections to colleagues and employers in particular field
- Career Centre, 202 McLaughlin College

<http://lassonde.yorku.ca/technology-internship-program>

<http://www.yorku.ca/careers/internships/technology.htm>



# Financial Information



- Student Financial Services
  - Scholarships, awards, and bursaries
  - Financial advising
  - Employment on campus
- Appointment bookings at Bennett Centre
  - Click on “Jump the Queue”



<http://sfs.yorku.ca/>



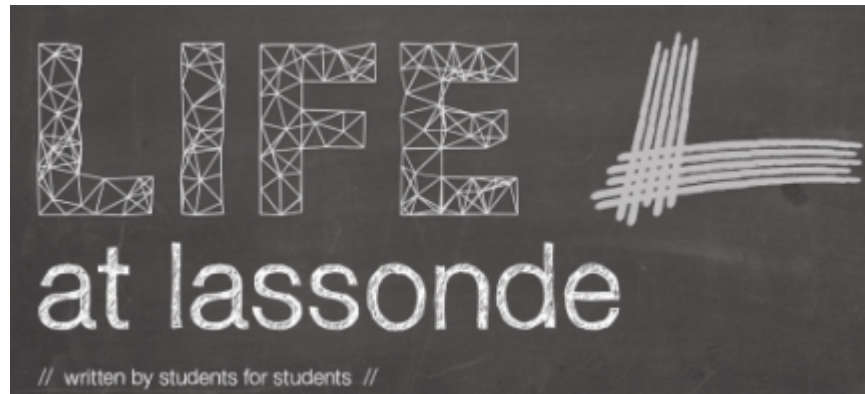
# Lassonde School of Engineering:

## Initiatives

<http://lassonde.yorku.ca/>



# LE Student Perspectives



- Lassondians have shared their experiences on topics including
  - Time management
  - Money

<http://lassonde.yorku.ca/meet-lassondians>

# Faculty-Student Mentorship Program



- Incoming LE students assigned to faculty member who will serve as mentor
- Students have faculty mentor throughout academic years
- Creates a strong connection between students and professors

<http://lassonde.yorku.ca/mentoring>

# Faculty-Student Mentorship Program (cont.)



- Both academic and non-academic assistance
  - Clarification of course expectations
  - Advice on future possibilities (e.g. graduate studies, careers)

<http://lassonde.yorku.ca/mentoring>

# Student Ambassador Program



- Recruitment and engagement initiative
- Opportunity for Lassondians to represent LE at events
  - Ontario Science Centre, Ontario Universities Fair, high school visits, and more
- Opportunity for Lassondians to be mentors for new students

<http://lassonde.yorku.ca/ambassador-program>

<https://yorku.collegiatelink.net/organization/LassondeStudentAmbassadors>

# Student Ambassador Program (cont.)



- Lassondians earn points based on involvement and in return can receive:
  - Certificates of leadership
  - Letters of appreciation
  - Eligibility for financial awards

<http://lassonde.yorku.ca/ambassador-program>

<https://yorku.collegiatelink.net/organization/LassondeStudentAmbassadors>

# Student Ambassador Program (cont.)



- Fantastic for resume-building, gaining experience and building skills
  - Mentoring
  - Team-building
  - Communication
  - Public speaking

<http://lassonde.yorku.ca/ambassador-program>

<https://yorku.collegiatelink.net/organization/LassondeStudentAmbassadors>



# Further Questions



- For additional assistance:
  - Contact your Peer Mentor
  - Drop by SOS PA office (BC 208)
  - Go directly to academic advising location



# Thank You



Thank you for using this module for guidance and enjoy your studies at Lassonde School of Engineering.

