

YU Continuing Studies

ADAPTIVE LEARNING

EDST 4999

April 6, 2023

Professor Celia Popovic

By: Mark, Rubab, Suvenea, & Erica

Our Project Sponsor



Dennis N. Associate Director of
Developing Digital Learning
Strategies for Schools

The York University School of Continuing Studies utilises social and experiential learning experiences on the quest to transform student learning into a more meaningful, flexible and personalised by fostering adaptive learning. “We believe that adaptive learning models can help students pursue their own learning path to mastery.” Concerns have risen regarding how to combine adaptive and cohort- based learning, and for this transformation to be successful, research in **What learning theories and instructional methodologies would you propose for enabling the most personalized adaptive learning scenario possible?** Is required.

What is Adaptive Learning?

Adaptive Learning is a technique that develops personalized learning paths that are actively designed to create effective, efficient and tailored learning experiences for each Learner to engage in.

Our Purpose was to help research:

What Learning Theories & Instructional Methodologies would WE propose for enabling the MOST personalized Adaptive Learning scenario possible?

OUR Greatest Discovery was...

→ Adaptive Learning rectifies “unconscious incompetence”

An Adaptive System will disentangle individuals' prior knowledge that may be incorrect resulting in them not knowing what they do not know (AKA unconscious incompetence). Adaptive learning resolves those issues.

→ Adaptive Learning Advances Long-Term Knowledge Retention

Practice makes perfect, and learning involves extensive practice. To fully absorb knowledge, exposure to “spaced repetition”(Pg5) is essential to develop further understanding and learning. Adaptive Learning Tools are not designed in a linear fashion but are developed to actively expose learners by understanding the learner itself while assisting the learners in the areas of need.

→ 4 Theories Behind Adaptive Learning

Metacognitive Theory, "Deliberate Practice" Theory, Theory Of Fun For Game Design, Ebbinghaus Forgetting Curve

How can WE apply this experience to OUR Life?

(Education Career)

→ Applying Adaptive Learning in Course designs

Because of its Question-Based and Student Specific Learning Objectives. While using adaptive learning to improve course design, the best question to engage in are “difficult to guess, easy to understand, create a context for the learner and enable the adaptive engine to perform optimally” (pg,6).

→ Adaptive Learning allows FASTER delivery of resources to Learners

By Formative Assessment, Adaptive Learning is able to develop an ideology of the learner by actively tracking their engagement, interactions of multiple courses without repetition of content, and essentially focuses on providing what is relevant for the learner.

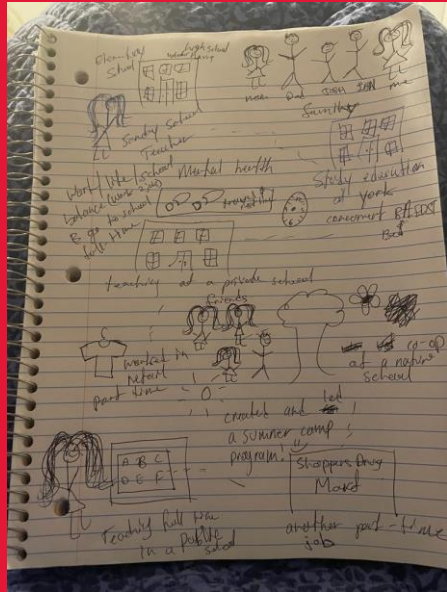
“Imagine the Adaptive Learning content as a MAP: the adaptive engine picks up the learner and places them on a map in a place they have never been before so that the learner so that the learner does not have to start the course again from scratch” (pg, 6)

OUR greatest challenges were...

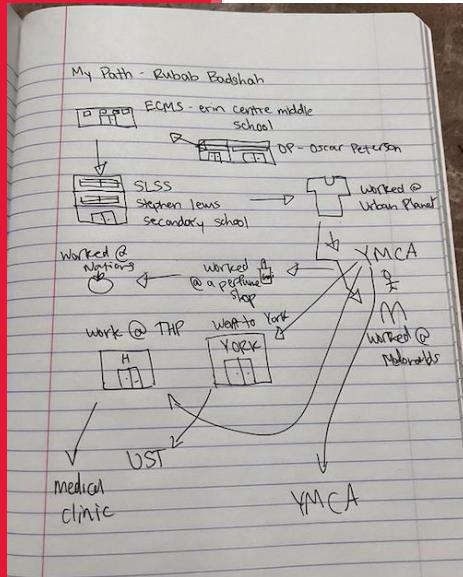
- **Coordinating a time to meet up with Dennis**
- **Research**
- **Readings**
- **Time management**



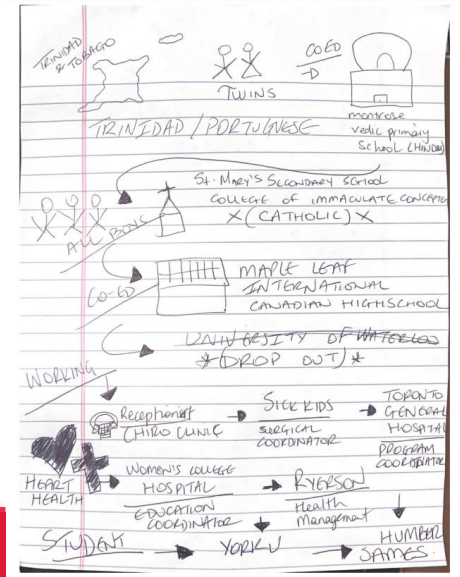
My Path (Suvena)



My Path (Rubab)



My Path (Mark)

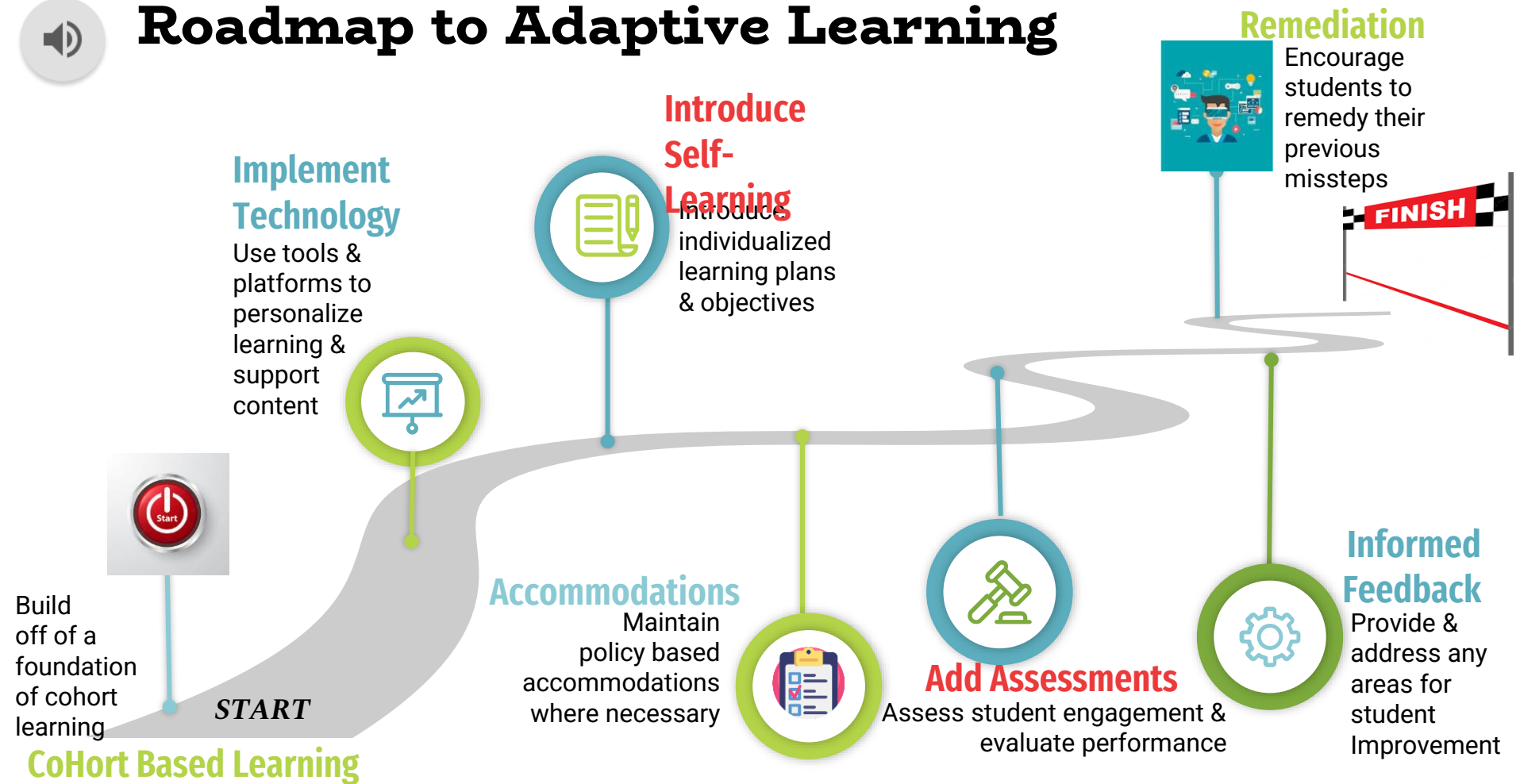


My Path (Erica)





Roadmap to Adaptive Learning



Resources

Area 9 Learning. (2018). What's broken about corporate e-learning and how adaptive learning heals the gap. Retrieved from: <https://trainingindustry.com/content/uploads/2018/04/Corporate-E-Learning-E-Book.pdf>

Neelakandan, N. (2021, May 12). How Adaptive Learning Will Give A Personalized Experience In eLearning. eLearning Industry. <https://elearningindustry.com/how-adaptive-learning-give-personalized-elearning-experience>