

The Use of Day Programs in York Region, Ontario – Lessons from Research and Practice

HUNG NGUYEN, POSTDOCTORAL TRAINEE, YORK UNIVERSITY

ANDREA UBELL, DIRECTOR, PROGRAMS & CLIENT SERVICES,
ALHEIMER SOCIETY OF YORK REGION

MATTHIAS HOBEN, ASSOCIATE PROFESSOR & HELEN CARSWELL
CHAIR IN DEMENTIA CARE

health | YORK U





To the funders, all team members who are supporting this work, and to the persons living with dementia, their caregivers, and care settings who have agreed to participate in the various parts of this research



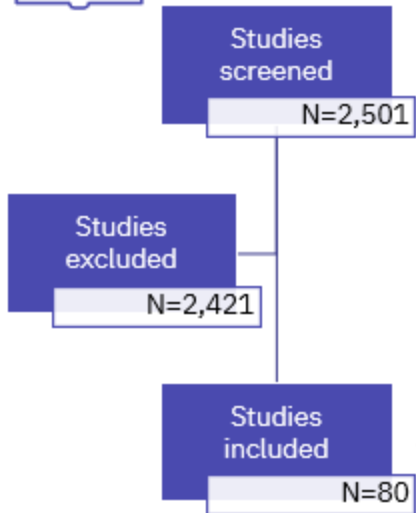
Objective and realist synthesis methods



Develop program theories on how and why day programs do or do not produce positive or negative outcomes for different groups of persons with dementia, and caregivers



Literature review



Focus groups

5 focus groups, total of 31 individuals

- Decision makers
- Day program managers
- Advocates and caregivers
- Day program staff
- Social workers



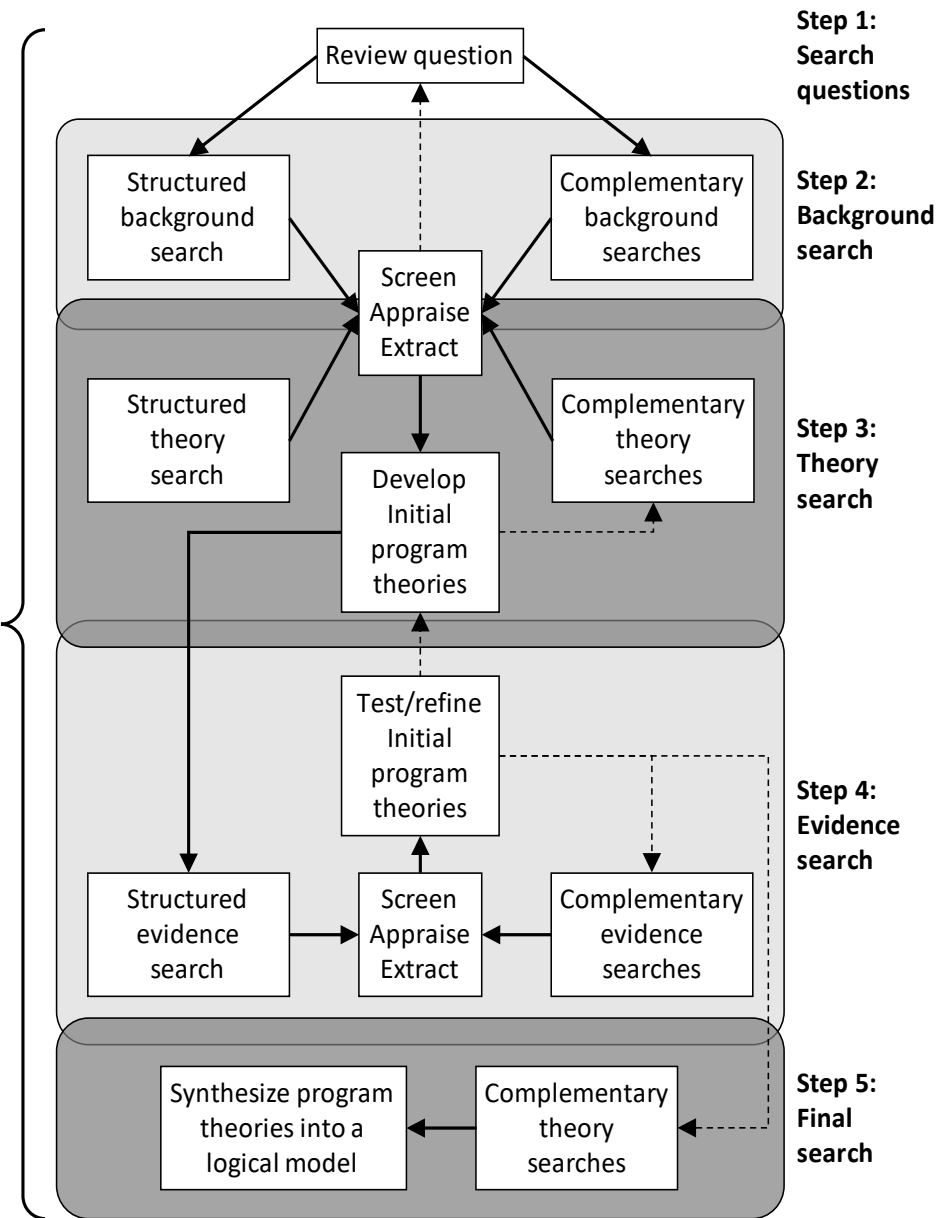
190 CMO statements

Examples of CMO statements:

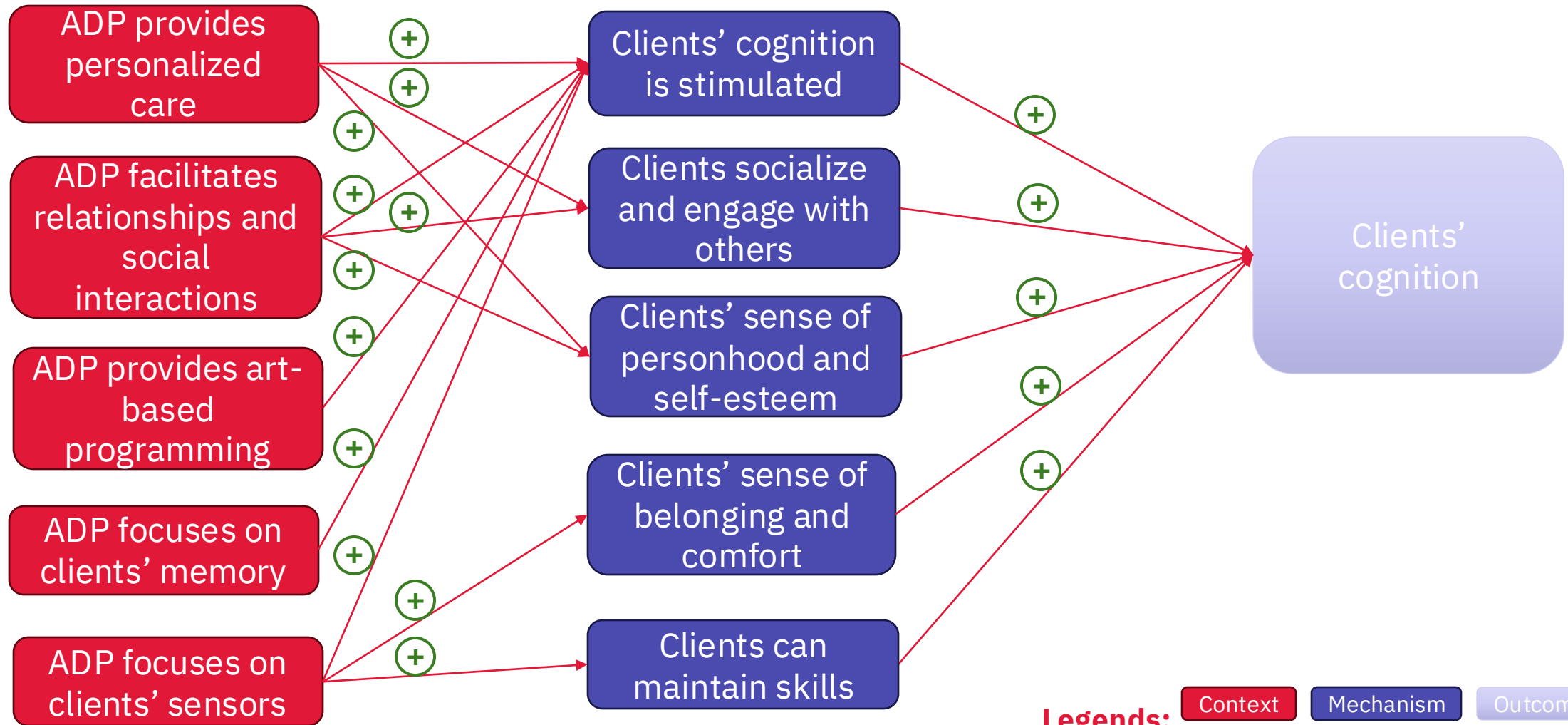
1. In day programs with hospital-like environments (C), clients feel like they are in a place for sick people (M), which makes them feel unsafe and increases their agitation (O)
2. In day programs in which a social worker supports caregivers (C), caregivers feel less overwhelmed with navigating the challenges of caregiving (M), which helps to reduce caregiver distress (O)

Step 6:
Documenting
and reporting

James Lind
priority
setting to
identify
priority CMO
statements
with our
experts



Model of the impact of day programs on cognition of individuals living with dementia



Legends: Context Mechanism Outcome

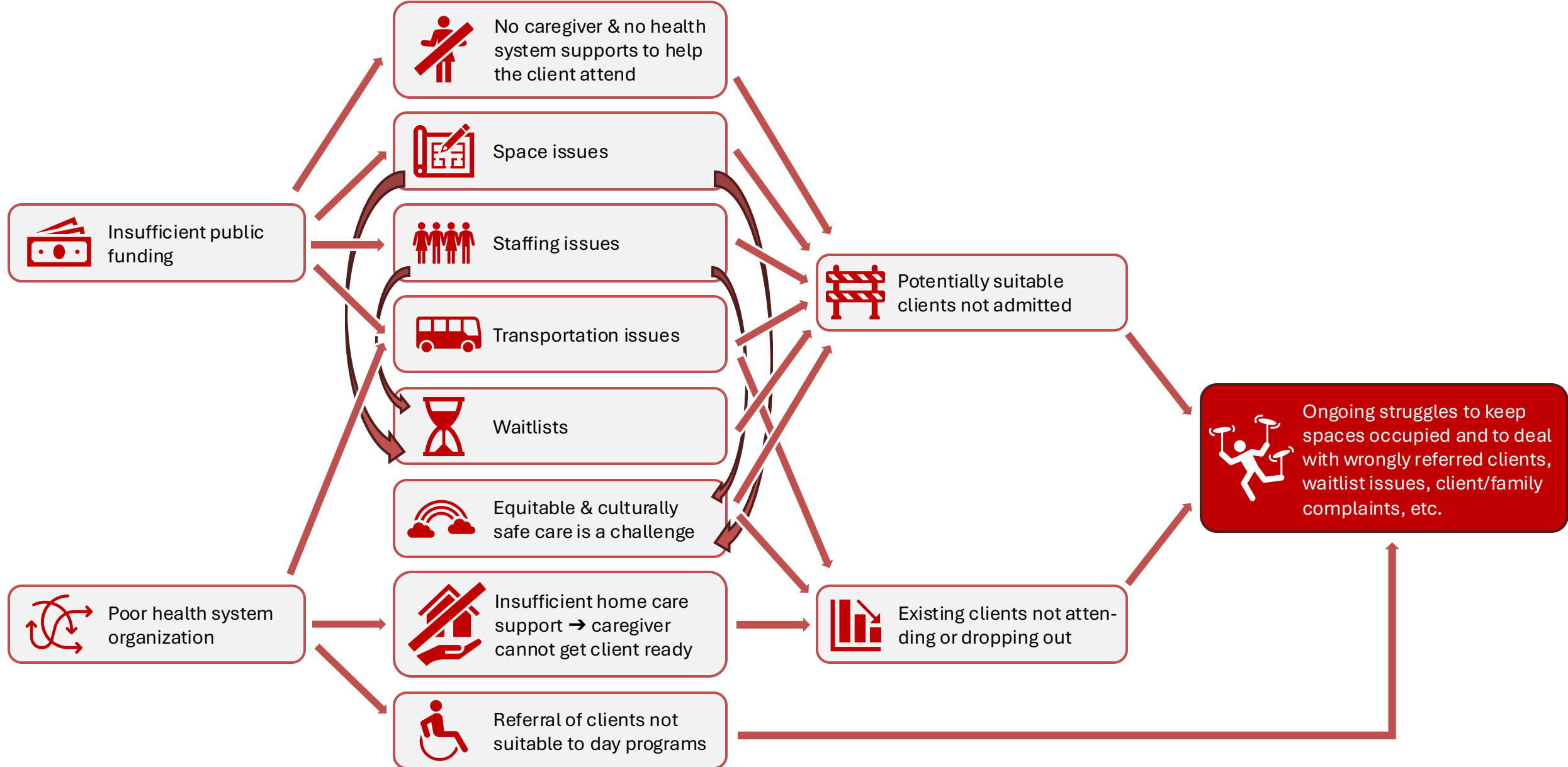
“Care coordinators sometimes refer an individual who clearly falls outside of the eligibility criteria. So then the family are upset, I’ll call the care coordinator and ask them to give me more context, ... It’s just a let-down for the families. And it’s work for us too. I got to phone them, and/or decline.”

Improving Support for Adult Day Programs Caring for Persons Living With Dementia in the York Region

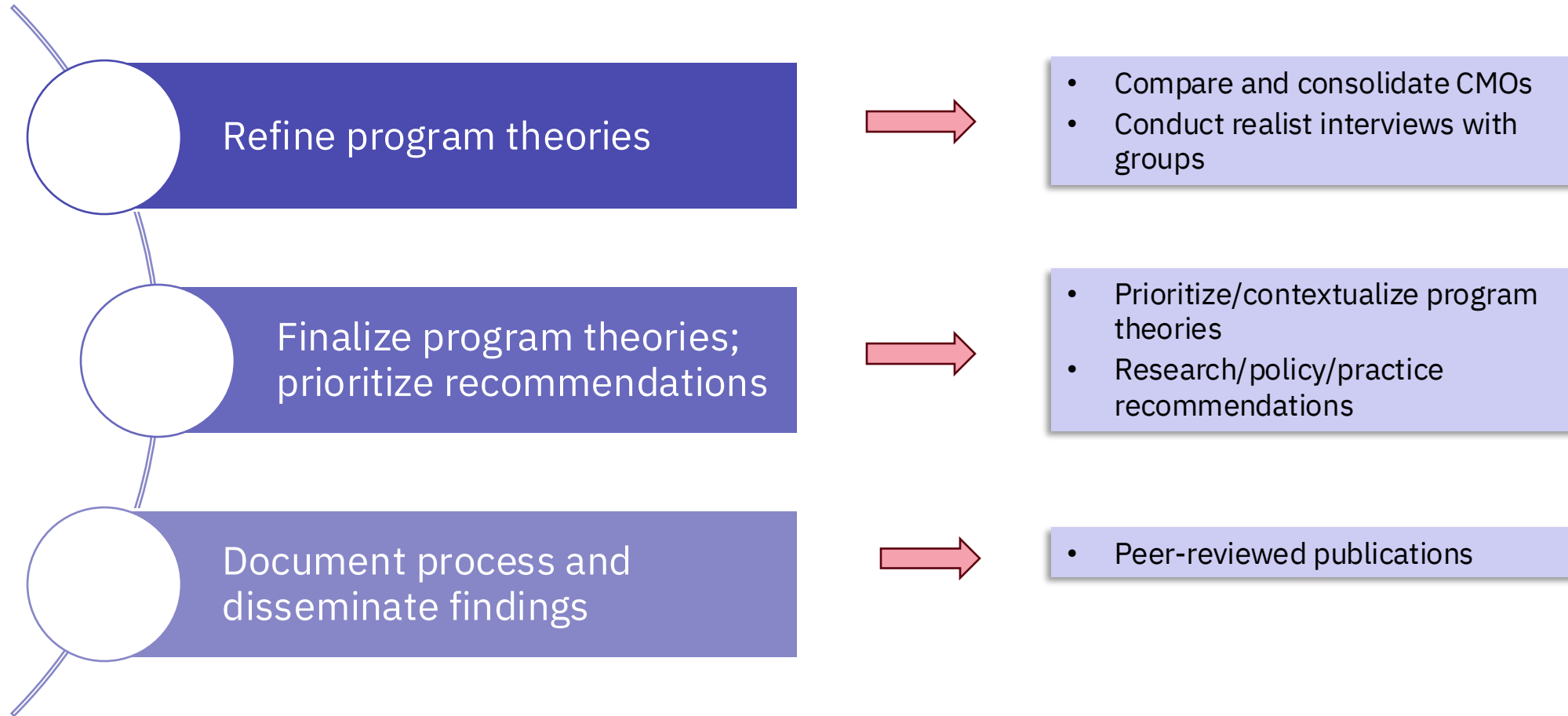
A Policy Brief Targeting Health
Authorities

Matthias Hoben, Manh Hung Nguyen,
Andrea Ubell

Structural and contextual constraints in day program management



Next steps



Thank you!