

WESTERN SYDNEY
UNIVERSITY



Study Abroad

STUDY IN SYDNEY

A thriving metropolis of almost five million people with a third of its population born overseas, Sydney is one of the most multicultural cities in the world.

CONTENTS

STUDY IN SYDNEY	2
WHY STUDY AT WESTERN SYDNEY	8
OUR CAMPUSES	10
MULTI-CAMPUS	12
LIFE ON CAMPUS	14
STUDENT SUPPORT	16
LIVING IN WESTERN SYDNEY	18
ACCOMMODATION	20
LIVING COSTS	22
THINGS YOU SHOULD KNOW	24
STUDY ABROAD FEES AND KEY DATES	26





STUDY IN SYDNEY, SEE AUSTRALIA

Sydney is one of the most liveable and picturesque global cities. With the world's largest natural harbour, 100 kilometres of coastline and beaches to explore, and an abundance of cultural activities year round, it's no wonder that Australia's largest city is consistently ranked internationally as one of the top 12 urban centres to visit or live in.

LANDMARKS

Some of the most famous Australian landmarks are here, including the Sydney Opera House, the Sydney Harbour Bridge, Bondi Beach and the Blue Mountains. Australia is also the proud home of the oldest living culture on earth. Indigenous Australians trace their history back 50,000 years and living in Sydney, you can glimpse their culture through their art, music, dance, stories and historic sites.

FOOD

The people of Sydney, known as "Sydneyiders", trace their collective heritage back to more than 170 countries. The city offers a taste of global cuisine through thousands of cafes and restaurants; from food trucks to five star eateries run by some of the world's most celebrated chefs. Fresh, reasonably-priced, locally-grown produce, meat and seafood is also available year round from grocers and markets.

CULTURE

You won't want to miss the year-round art, music, food, theatre, film and design festivals that put Sydney on the world cultural map. Sydney's Museum of Contemporary Art, the Australian Museum, the Art Gallery of New South Wales, the Sydney Aquarium and Taronga Zoo are all world-class attractions, as is the abundant natural environment that many Sydneyiders enjoy. The city is also home to the Sydney Theatre Company, the Sydney Dance Company and Opera Australia, as well as many other arts organisations.

OUTDOORS

A visit to Sydney is incomplete without enjoying the outdoor activities the city has to offer. Learn how to surf, paddle board or snorkel off the many ocean or harbour beaches. Head off on a walk, cycle or jog in one of the many city or coastal parks where you might stop for a picnic or barbecue to enjoy the view and the abundant bird life.

CLIMATE

Sydney's climate is comfortable and temperate year round. Generally, January and February are warm, while winters are mild. Average temperature (low-high):



SUMMER: December – February
18–29 degrees Celsius



AUTUMN: March – May
11–24 degrees Celsius



WINTER: June – August
9–17 degrees Celsius



SPRING: September – November
11–24 degrees Celsius


TRAVEL CENTRE

With the country's biggest airport, and as the centre of many bus and train transport hubs, Sydney is well-suited as a base to visit the rest of Australia. Take a weekend to shop in Melbourne, visit Canberra – the country's capital for the annual tulip festival Floriade, or make a longer trip to the Great Barrier Reef in Queensland or even Kakadu in the Top End of northern Australia.



UNLIN





MITED.

We believe in a world of unlimited opportunity, where the potential for success is unlimited for those with talent, drive and ambition. **Success starts here.**



WHY STUDY AT WESTERN SYDNEY?

LEADERSHIP IN ONE OF AUSTRALIA'S FASTEST GROWING REGIONS

Greater Western Sydney is Australia's third largest economy and is one of the fastest growing population and employment centres. It is an increasingly important, dynamic and culturally diverse hub of business, industry and innovation. With a large multicultural population of more than two million people from 170 nations, Western Sydney's global links are creating unlimited opportunities for international business, investment, education and cultural exchange.

REPUTATION FOR EXCELLENCE

We're ranked among the top two per cent of universities in the world, with a growing international reputation for research-led, student-centred learning.

OUR STUDENTS SIT AT THE HEART OF EVERYTHING WE DO

Our student-centred approach offers you the choice of on-campus and flexible study options combined with work-integrated learning. Through work experience placements, internships and volunteering opportunities, you'll get the real-life experience, practical skills and knowledge that you need for your future career.

OUR STUDENTS ARE PARTNERS IN LEARNING

Unlike the traditional lecturer-down approach, our pioneering model of co-created learning treats our students as partners in their education. We empower students to share ideas and develop their creativity through a range of degrees.

OUR CURRICULUM PREPARES YOU FOR TODAY'S WORLD

We work with our community, business partners and industry leaders to develop program content that meets the needs of employers and the jobs of the future, and which responds to the challenges of a global workplace.

WE EMBRACE TECHNOLOGY-ENRICHED LEARNING

From our innovative social learning spaces, online learning environments and use of digital technologies to enhance the study experience our on-campus computer laboratories and state-of-the-art library, research and clinical facilities, we adopt new and emerging technologies to provide a richer educational experience.

OUR RESEARCH HAS GLOBAL IMPACT

We see learning and research as connected aspects of the student experience, putting you close to world-leading research that is changing lives in the communities we serve.



**UNI IN THE WORLD
FOR COMMITMENT
TO UNITED NATIONS'
SUSTAINABLE
DEVELOPMENT GOALS**

Times Higher Education Impact Rankings 2022



TOP 2%
OF UNIVERSITIES WORLDWIDE*



130+
CLUBS & SOCIETIES

* Times Higher Education (THE) World University Rankings 2020

OUR CAMPUSES

BANKSTOWN

The Bankstown campus is a warm, friendly, multicultural environment with modern, spacious buildings and landscaped gardens.

The College at Bankstown houses over 1,000 students and features accommodation, a range of lecture theatres, multi-purpose computer labs and a student common room.

Top facilities:

- Early Childhood Centre
- The MARCS Institute for Brain, Behaviour and Development
- Centre for Educational Research (CER)
- Psychology laboratories

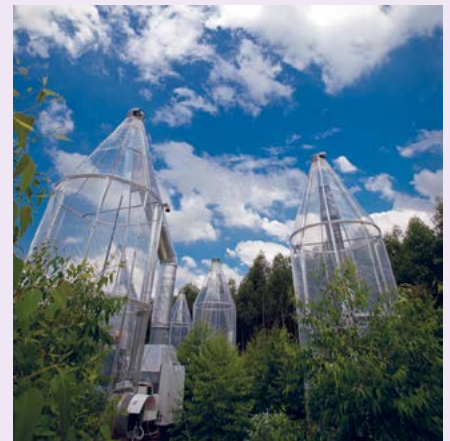


CAMPBELLTOWN

The Campbelltown campus offers a unique balance between city and rural lifestyles.

Top facilities:

- Purpose-built School of Medicine
- National Institute for Complementary Medicine (NICM)
- Transnational Health Institute (THRI)
- The UniClinic, a state-of-the-art clinical training facility for health science students
- Anatomy laboratories
- Nursing clinical practice unit



LIVERPOOL CITY

In the heart of the Liverpool CBD, this purpose-built facility services the needs of more than 1,000 students.

Top facilities:

- 3,000sqm campus
- High-quality, modern, technology-rich and highly-flexible space
- Nursing Clinical Practice Units
- Whole floor library facility
- Home to Launch Pad smart business centre, which brings together government, corporate and University expertise and provides mentorship to start-ups and early stage businesses



HAWKESBURY

This stunning location at the foot of the Blue Mountains is an ideal place to study.

Top facilities:

- Food Processing Pilot Plant
- Dedicated Crime Scene House
- Nursing clinical practice unit
- Hawkesbury Institute for the Environment
- Animal Science facilities – including the reptile house and small marsupial house

PARRAMATTA

This campus offers a combination of heritage and contemporary buildings. The campus spans two sites in Rydalmere.

Top facilities:

- Institute for Culture and Society
- Nursing clinical practice unit
- Moot court
- Computing laboratories
- Science and Psychology building
- Purpose-built production studio, design and creative arts facility
- Engineering precinct
- Advanced Materials Fabrication and Characterisation facilities
- New Industrial Design Centre



PARRAMATTA CITY

State-of-the-art campus located in the heart of the Parramatta CBD at 169 Macquarie St.

Top facilities:

- Sydney Graduate School of Management
- Four interactive, technology-enabled learning studios per level
- More than 120 student PCs available
- Collaborative and quiet study spaces
- Library hub
- Group study rooms with screen sharing and video conferencing
- Free shuttle bus to Parramatta South
- Launch Pad – technology business incubator

The Parramatta City campus at 100 George Street is home to the Western Sydney University International College offering Foundation and Diploma programs.



PENRITH

Penrith campus is renowned for its state-of-the-art facilities and scenic grounds.

Top facilities:

- Centre for Infrastructure Engineering
- Mechatronics and Robotics facility
- World-class music facilities
- Home of the Solar Car
- Advanced Manufacturing and 3D Print Hub
- State-of-the-art Library with world-class facilities
- Psychology clinics
- Launch Pad – technology business incubator



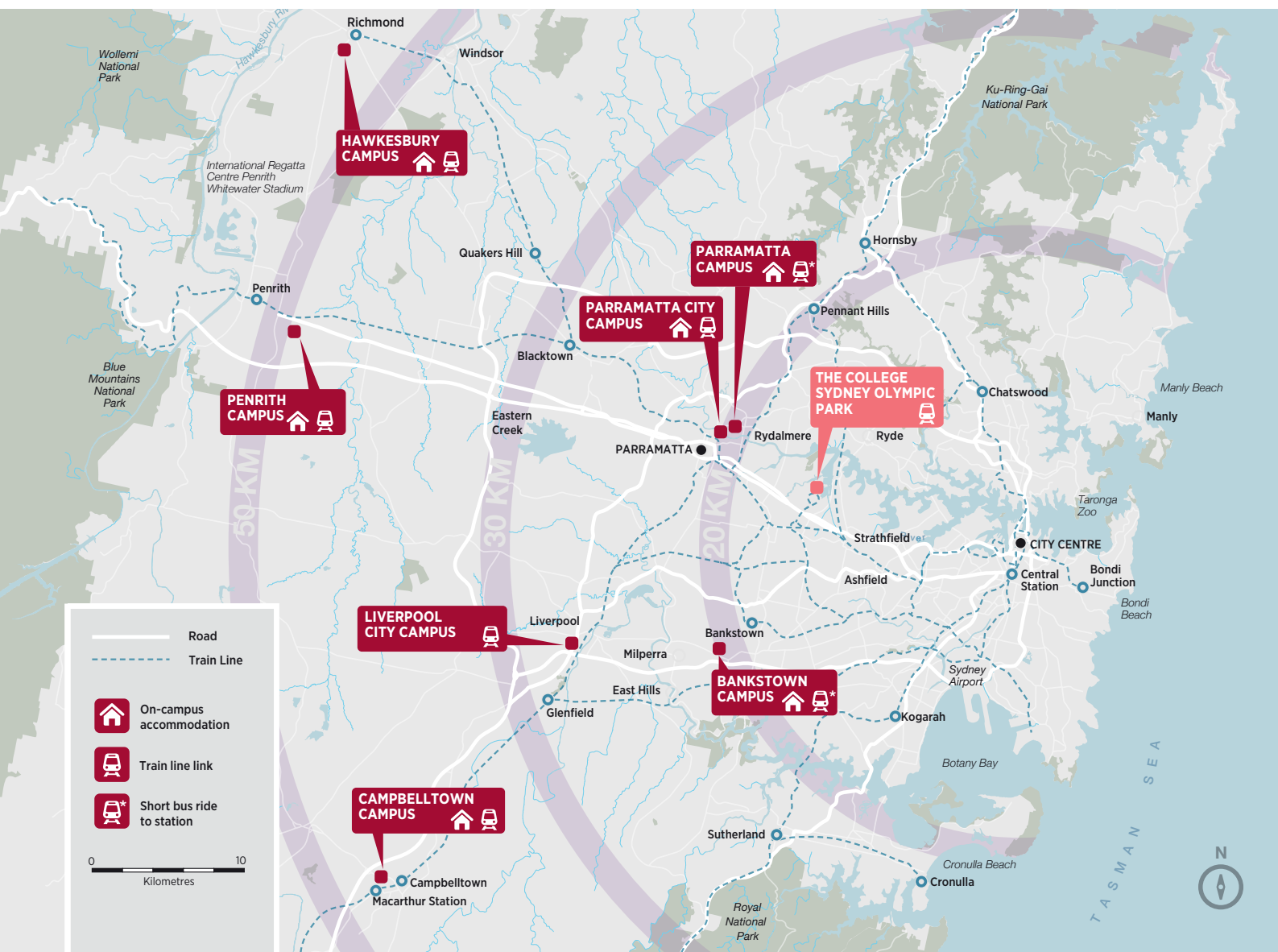
SYDNEY OLYMPIC PARK

The Sydney Olympic Park campus is situated at Level 4, 8 Australia Avenue, Sydney Olympic Park. Home to The College's English Language programs, the Sydney Olympic Park campus is located just 20 minutes from the Sydney CBD and conveniently located next to Sydney Olympic Park train station.

Top facilities:

- English Language program
- English Test Centre (IELTS and Pearson testing)
- Collaborative learning spaces

MULTI-CAMPUS



UNIQUE CAMPUSES

Each campus has its different characteristics but all are inclusive and multicultural. Some have contemporary modern and high-tech buildings, while others have more serene, pastoral environments. On-campus facilities include state-of-the-art research and clinical facilities, libraries, computer laboratories, innovative social learning spaces, wireless internet, cafes, bars, gyms, sporting grounds, tennis courts, and open space to study or just relax.

WHICH CAMPUS WILL I STUDY AT?

As a Study Abroad student, you can study at Parramatta and Parramatta City campuses, Penrith campus, Bankstown campus, Liverpool campus, Campbelltown campus or Hawkesbury campus, depending on your choice of subjects and their availability on the respective campuses. Cross-campus study is not allowed.

TRANSPORT

All Western Sydney University campuses are accessible by public transport. As a Study Abroad student you can purchase an Opal Card – a smart card to use on all buses, trains and ferries so you don't pay cash. Campuses are also linked to local train stations by free University shuttle buses.



WESTERN SYDNEY
UNIVERSITY

169

WESTERN SYDNEY
UNIVERSITY

MAKE SENSE OF
WHO WE ARE.

BACHELOR OF PSYCHOLOGY, WESTERNSYDNEY.EDU.AU

HIGER

BW 00 FO



LIFE ON CAMPUS

One of the best things about life on campus is there's always something happening. From table tennis comps, outdoor chess, sports and Unigames, to one of many social events organised by the University or student clubs, you're bound to find something that's right for you.

WESTERNLIFE

WesternLife is the online platform that will help you stay informed and get involved. As part of the online community, you'll find exciting events and take ownership of your social diary!

Discover exciting Campus Life events, clubs, sports, student representation opportunities and much more. You can even check out where free breakfasts are on campus, browse clubs you'd like to join or even see the calendar of events and plan your week ahead.

UNIVERSITY SPORT

Western Sydney University is actively involved in providing opportunities for students in all forms of sport from social lunchtime Quidditch or dodgeball, to supporting our elite athletes to succeed both on and off the field.

Western Sydney University is the best place to get involved in sport clubs, Elite Athlete programs, representative sport such as University Games, Inter-varsity tournaments and social sport.

OUT & ABOUT

Western Sydney University has developed a program of activities and adventures open to all students. The Out & About trip list includes one bushwalk each month, overnight camps and regular adventure experiences.

Being run and coordinated wholly by Campus Life staff means that Out & About trips and adventures are catered directly to the needs and wants of our students. All trip leaders hold a current Senior First Aid certificate, work in pairs and follow strict safety guidelines and detailed risk assessments to make your experience memorable for the right reasons.

FOOD

Western Sydney University boasts a number of food outlets on each campus including Subway, Oliver Brown, Jamaica Blue and Piccolo Me. For a full list of food outlet trading hours and locations, visit westernsydney.edu.au/campuses

LIBRARY

The Library is for you – on campus and on the go. We offer students access to six libraries across campuses which include 24-hour study hall access with quiet, silent and group study spaces, as well as bookable study rooms. You can also enjoy access to over seventy million digital resources anytime and anywhere with access to material for both study and recreation. We have close to a million items you can borrow and over 700,000 e-books to download instantly. Online and face-to-face study assistance is also available. From computers, free digital newspapers and magazines, printing services and device charging stations, to laptops for loan and sleep pods, you will find it all at the Library.



STUDENT REPRESENTATION AND PARTICIPATION

Western Sydney University student representation aims to invigorate the student body at the University. Student representatives are from a diverse range of backgrounds, cultures and areas of study. Support offered includes strategic advice, financial oversight and facilitation of the student voice. From food prices and parking, to academic teaching quality and student services, to clubs, societies and campus life, the student reps on your campus will be able to listen and help you experience a better life at university. For more information, visit westernsydney.edu.au/students

GYMS AND FITNESS

Western Sydney University offers gyms and fitness facilities on most campuses. Facilities include large, bright and spacious air-conditioned premises. Approachable experienced staff deliver exceptional personal training programs, conduct health tests, offer nutritional guidance and give you appropriate support throughout your fitness and lifestyle journey. Visit gym.westernsydney.edu.au for more information.

TRAVEL OPTIONS

- Public transport – visit transportnsw.info for up-to-date travel information.
- Shuttle buses run regularly between train stations and campuses and the next arrival can be easily tracked on the Western Sydney App or the Shuttle Tracker web page.
- Bike – on-campus bike parking is available. See westernsydney.edu.au/cycling for locations.
- Drive or car pool – for parking permit fees, see westernsydney.edu.au/parking

STUDENT SUPPORT

At Western Sydney University, we provide a wide range of services to help you achieve academic success. These include advice on careers, employment, learning skills, counselling, religious support and support for students with disabilities.

westernsydney.edu.au/services

AIRPORT PICK-UP

The complimentary airport pick-up service is available to all new international students commencing at the University in undergraduate, postgraduate or research programs. Students can arrange to be collected from Sydney airport on arrival and taken to their home campus. Students studying a pathway program (English, Diploma or Foundation Studies) at The College, Western Sydney University will be able to access this service for a fee.

westernsydney.edu.au/airportpickup

INTERNATIONAL ORIENTATION

The International Orientation program is specifically designed for international students to help you prepare for your studies at Western Sydney University. It takes place before classes commence and all international students are required to attend (check your offer letter for dates). Please make sure you arrive in Australia at least one or two days before the commencement of the Orientation program.

westernsydney.edu.au/international/orientation

STUDENT SERVICES HUB

The Student Services Hub is your first point of contact for information, advice, forms and referral to other services. The Student Services Hub team can help you with most of your enquiries and they can put you in touch with the right services or area to resolve your issues. Each campus has a Student Services Hub, where you can get assistance with issues related to student visas, overseas student health cover, enrolment and admission issues.

westernsydney.edu.au/studentcentral

STUDENT WELFARE

The Student Welfare Service provides welfare support to all international students, including advice on financial assistance, accommodation, health related issues and student advocacy needs. This service has professionally trained staff to help you work through unexpected problems and is available at all campuses.

Welfare officers can provide information and advice about your study options, such as reduced study load or leave of absence on compassionate grounds, and can help find the right services to talk to.

The Student Welfare Service also regularly organises information sessions and workshops for international students.

westernsydney.edu.au/internationalstudentsupport

westernsydney.edu.au/welfareservice

STUDY SUPPORT

The teaching styles you will encounter at Western Sydney University and the study skills required might be very different from what you have been used to in your home country. Western Sydney University offers a range of support programs including Academic Literacy Workshops and other services to help you succeed.

westernsydney.edu.au/internationalstudentsupport

ENGLISH CONVERSATION GROUPS

Improve your English speaking skills and build your confidence by participating in English conversation groups. These groups are run by trained volunteers and will provide an opportunity for participants to practice and improve their spoken English in a friendly and social environment.

westernsydney.edu.au/englishconversation

PEER ASSISTED STUDY SESSIONS (PASS)

Peer Assisted Study Sessions (PASS) is a free and voluntary student-centred learning program offered face to face and online. One-hour sessions run weekly throughout the teaching session. In PASS, you will meet and work collaboratively with other students from your subject to understand the subject content and develop study strategies to help improve your academic performance. Sessions are facilitated by senior students who have successfully completed the subject before. They guide students through the program material and facilitate students' learning through planned activities and discussion.

Through actively working together with other students, you will find that you are more engaged and will develop a deeper understanding of the subject content. PASS is an informal and welcoming environment to study, where you can gain a deeper understanding of subject content and meet other students from your program.

PASS sessions run for a large range of subjects and on multiple campuses.

westernsydney.edu.au/pass

MATES

MATES is a peer-mentoring program for students just starting their university study, or returning to study after some time. New students are matched with students in later years of study. This helps you make friends, network with other students and gain knowledge and skills to settle into life at university.

westernsydney.edu.au/mates
mates@westernsydney.edu.au





The Greater Western Sydney region is Western Sydney University's home. The region encompasses the area northwest, southwest and west of Sydney and is Australia's third-largest regional economy. With a population of more than two million people from 170 countries, it is a thriving centre of opportunity, diversity and innovation that welcomes international students.

BUSINESS

Many multinational corporations have operations in Western Sydney, including BHP Billiton, Coca-Cola Amatil, Sony, PricewaterhouseCoopers, Deloitte, and Canon, making it a hub of business development. Because of the University's strong ties to local business, industry and community leadership, our students can access many study, internship, work and volunteer opportunities here.

HISTORY

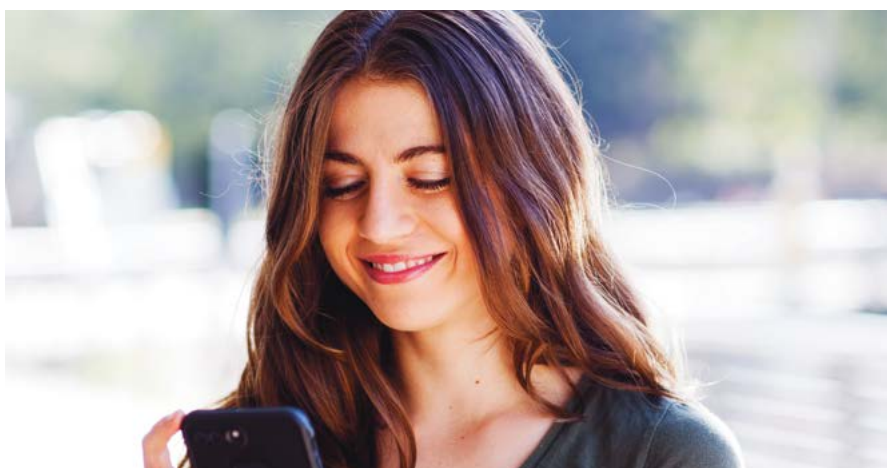
The Greater Western Sydney region was originally inhabited by several Indigenous nations including the Bidiagal and Darug people. Radiocarbon dating shows human activity in the area 30,000 years ago. It is also steeped in colonial history – European settlers arrived here just ten months after landing at what is now the Rocks in the heart of Sydney in 1788.

Old Government House in Parramatta was the 'country' home of ten NSW governors in the first half-century of European settlement in Australia. The World Heritage listed site in Parramatta Park, built between 1799 and 1816, contains furniture and treasures from the 19th century and is open to the public.

THE OUTDOORS

With nature close at hand, including national parks, abundant parklands, the Parramatta, Nepean and Hawkesbury Rivers, Western Sydney is ideal for outdoor and sports enthusiasts. It's easy to find a place to jog, walk, cycle, row, kayak or swim or enjoy a peaceful picnic, barbecue or a friendly game of cricket, soccer or Frisbee with friends.

The region is also close to the World Heritage-listed Blue Mountains, where you can go bushwalking, canyoning, camping, rock climbing and horse riding against the dramatic backdrop of rainforests, mountains, valleys and waterfalls.



SPORT, SHOPPING AND FOOD

Greater Western Sydney also boasts successful football, rugby league, cricket and Australian Football League teams if you want to watch a game or join a community sporting team yourself.

The nearby Sydney Olympic Park at Homebush, site of the 2000 Olympics, offers aquatic and archery centres and cycle tracks open to the public. The Park's Accor stadium and other venues host national and international football, hockey, basketball and tennis tournaments and athletics events, as well as major contemporary music concerts.

Across Greater Western Sydney, if you are keen on shopping, you'll discover a wide selection of department stores, cinemas, restaurants, cafes, local markets and specialty stores. You can explore major retail centres, including Westfield Parramatta, one of Australia's largest shopping centres. With the region's rich multicultural population, you'll find the flavours, foods and spices you're accustomed to at home – or why not be adventurous and sample some new cuisines?

CULTURE

Living in Greater Western Sydney, you'll also have the opportunity to take part in festivals, such as Lunar New Year celebrations and other cultural events, including the annual Sydney Festival Parramatta which has a packed program stretching over ten days.

SAFETY IN AUSTRALIA

Australia is a very safe country compared with other parts of the world. When you arrive in Australia you will find the majority of people open and friendly.

studyinaustralia.gov.au/global/live-in-australia/health-and-safety

WORKING IN AUSTRALIA

As an international student, you may work up to 40 hours per fortnight during each study session (semester) and unlimited hours when your program is not in session.

Permission to work will automatically be included in your student visa. Although you are able to work in Australia, you cannot rely on that income to fund your tuition fees or living costs for the duration of your stay in Australia.

Many international students choose to work part-time during their studies, but it is unrealistic to expect that you will find part-time work as soon as you begin looking for it. You will first need to become familiar with the city and the areas where part-time employment is available. It is also important to understand your study obligations before you commit yourself to part-time work.

studyinaustralia.gov.au/global/live-in-australia/working

The Fair Work Ombudsman provides important information about your employment rights and conditions in Australia.

fairwork.gov.au/internationalstudents



ACCOMMODATION

Living on campus offers great opportunities to make new friends and experience all that university life has to offer.

ON-CAMPUS ACCOMMODATION

Western Sydney University offers high-quality, fully furnished accommodation options for international students on all campuses. Living on campus offers great opportunities to make friends and experience student life to the fullest.

Western Sydney University Village offers students excellent value for money. Staying on campus means you will save money on transport and have access to free shuttle bus services, or you can simply walk to your campus.

FACILITIES

Most Western Sydney Villages include:

- student lounge with communal kitchen
- TV lounge
- computer and study rooms
- BBQ area
- laundry
- free internet for university students
- access to exclusive ResLife program.

TYPES OF ROOMS

There are plenty of options to choose from. Looking to meet new people? Choose a shared townhouse or villa! Room types vary on each campus, but chances are we'll have something for you whether you're looking to live in style or work to a budget.

You can choose from a studio, apartment, villa or townhouse. Accommodation options vary between campuses. The cost of on-campus accommodation depends on the location and the type of room you choose.

Have questions? Give the Village a call on **+61 2 8760 0012** or visit **westernsydney.edu.au/village**

SECURITY AND SUPPORT

Western Sydney University Village provides 24-hour support for residents, with a dedicated team of Resident Assistants, an evening duty manager and nightly security patrols.

Rooms and common areas are only accessible by electronic swipe card and all individual bedrooms are lockable.

LIVING OFF CAMPUS

The Western Sydney region has a vast range of affordable apartments and share housing options. A homestay with an Australian family could also be a suitable option. You get to experience Australian culture and it can help you settle in quickly, providing the opportunity to participate in the daily routine of an Australian family and to practice your English language skills.

westernsydney.edu.au/accommodation



LIVING COSTS

As a student visa holder, you will be required to have approximately AUD\$21,041 per person per year for living expenses, as advised by the Australian Government. However, the actual cost depends on your individual lifestyle and you should budget for approximately \$26,000 per year per adult. Although it is difficult to predict your exact expenses, the cost of living guide below gives you some expected costs plus useful information about general living costs. Costs indicated are a guide only, the actual cost depends on your individual lifestyle.

Further information on financial requirements can be found at:
westernsydney.edu.au/international/applying/fees-and-costs/cost-of-tuition

LIVING EXPENSES PER YEAR

Approximately \$21,041 - \$26,000

studyinaustralia.gov.au/english/live-in-australia/living-costs

SETTLING IN EXPENSES



Airport Transfer \$80-\$150

Based on transport costs from the airport.

\$0 If you are arriving in Australia for the first time, you can be met at the airport as part of the free airport shuttle service arranged by Western Sydney International. The service provides a drop off to your Western Sydney University campus.



Groceries and household items, transport and associated expenses \$300-\$500

To help you set up your home.



Security deposit, rent advance or rental bond \$300-\$900+

On-campus accommodation requires a security deposit (refundable on departure subject to conditions). Rent for your accommodation in advance or a rental bond (a minimum of four weeks rent) is required if you are renting off-campus accommodation.



Bedding, utensils and furnishings \$800+

Varies depending on whether it is provided for you in your accommodation. On-campus accommodation at Western Sydney University is fully furnished, however you will need to purchase your own linen and kitchen utensils. Rental accommodation is mostly unfurnished. Visit westernsydney.edu.au/village for details.



Warm clothing \$50-\$150

Especially in winter (June to August) if you are coming from a tropical climate.



Textbooks \$600+

You can save money by buying second hand books. Check out campus noticeboards or go to secondhandbooks.westernsydney.edu.au

WEEKLY ONGOING EXPENSES



Accommodation \$130-\$520

Cost depends on your style of accommodation on or off-campus.

On-campus accommodation costs can be found at: westernsydney.edu.au/village

Off-campus accommodation: a two-bedroom apartment in Parramatta costs about \$350-\$450 per week to rent.



Electricity, gas, water \$35-\$140

For on-campus accommodation, costs are included. Costs vary for off-campus accommodation depending on share arrangements.



Phone calls and internet \$20-\$200

There are many mobile phone providers and payment options (including prepaid and post-paid plans) available to choose from.

International calling cards (phone cards) to call home are available and are generally a cheaper way to call home.



Groceries \$80-\$180

Based on home cooked food.



Public transport fares \$15-\$55+

Depends on how far you live from a Western campus and how often you use public transport. Free shuttle bus service is available to and from campuses to the nearest train station.



Stationery/photocopying \$15

The library has many books and journals available online so this may reduce photocopying costs. You can also purchase stationery at discount department stores.



Personal items, entertainment etc. \$80+

Eating out with friends.

All prices are quoted in Australian dollars

*Please note these figures are only an indication and may vary



EXCHANGE STUDENT PROFILE

Nicole Macmillan

UK (BACHELOR OF BUSINESS)

“Living here in the Western Sydney University Village in Parramatta, I have really learned how to be independent, living away from home in another country. I have had to buy food for myself, and I am slowly learning how to cook. I was initially a really bad cook but I am going quite well now; I can’t depend on my mum and sisters.

“It is really easy to make friends here – you bump into people at meals and in your classes. It’s such a welcoming environment. I have made so many friends from Australia and also from all over Europe. When I travel in Australia, I will have friends to stay with and also when I go back home to the UK.

“I have already gone travelling in New Zealand with some of the friends I made here. Back home, I have friends I have known for years and never travelled with and now I was travelling with people I had known for only a few months. It was kind of surreal but we really had an amazing time. I especially loved Queenstown.

“I was also quite successful on my exams which was quite a relief, and now I have just got a job as a Residence Assistant which means I will be helping other new students – like me – settle in to the Village. I think that coming to Australia to study has been a great decision for me.”



THINGS YOU SHOULD KNOW

BEFORE UNIVERSITY

WHAT CAN I STUDY?

As a Study Abroad student at Western Sydney University, you can design your own program by selecting subjects from a wide range of study areas. Study Abroad students can take a one or two-semester fulltime study program.

FIELDS OF STUDY INCLUDE:

- Architecture
- Arts and Humanities
- Business
- Computing
- Construction Management
- Creative Industries
- Data Science
- Engineering
- Health and Sport Sciences
- Industrial Design
- Law
- Psychology
- Sciences
- Social Sciences
- Teaching and Education
- TESOL, Interpreting and Translation
- Therapeutic Studies and Counselling
- Tourism and Urban Planning

See westernsydney.edu.au/handbook for full subject details.

ACADEMIC CALENDAR

Western Sydney University Schools operate on a semester system, with Autumn Semester running from March to June and Spring Semester running from June/July to December. The Sydney Graduate School of Management operates on a quarterly system. Please see the Academic Calendar on our website for session dates.

westernsydney.edu.au/dates

HOW CAN I APPLY?

To apply to study at Western Sydney University, Study Abroad students must fulfill English language and academic requirements.

Please go to our website for full eligibility requirements and application instructions.

westernsydney.edu.au/studyabroad

TUITION FEES AND REFUND POLICY

Your Offer of Admission letter will include the tuition fees you need to pay and your compulsory overseas student health cover costs. All required fees must be paid in advance for each session/teaching period. Non-payment of fees may lead to discontinuation of your enrolment which may impact your visa.

Tuition fees are subject to annual increase each calendar year. You will also be required to pay for repeat or additional subjects. Please note tuition fees cover the cost of your tuition only. They do not include other expenses associated with your study, such as books, equipment, accommodation and living expenses.

westernsydney.edu.au/international/applying/fees-and-costs/cost-of-tuition

If you require a refund of your fees, it is important that you notify Western Sydney International in writing as soon as possible. The exact refund you will be entitled to will be assessed according to the Refund Policy. Your copy of the University's Refund Policy will be sent with your Letter of Offer.

westernsydney.edu.au/international/refund

OBTAINING A STUDENT VISA

Before you come to study in Australia, you must obtain a student visa from the Department of Home Affairs (DHA). To apply for your visa you must include your Confirmation of Enrolment that is issued by the University once you have accepted your Offer of Admission and have paid all required fees.

You may not require a student visa to study in Australia if you hold another valid temporary visa that allows you to enter and stay in Australia with no restrictions on study.

Information about how to apply for a student visa can be found on the DHA website.

homeaffairs.gov.au/Trav/Stud

OVERSEAS STUDENT HEALTH COVER (OSHC)

OSHC is compulsory medical cover for student visa holders and their dependants and covers much of the cost of medical and hospital care while in Australia. OSHC by Bupa is the preferred provider for Western Sydney University.

If you do not have valid OSHC, you will be required to pay OSHC when you accept your offer to the University. Your OSHC costs will be included in your Letter of Offer. You must maintain your OSHC while in Australia.

bupa.com.au/health-insurance/oshc

THROUGHOUT UNIVERSITY

VISA CONDITIONS

Your student visa comes with a number of conditions. It is important that you are aware of the rules of your student visa, and you do not breach them, to avoid your visa being cancelled.

westernsydney.edu.au/studentvisa

STUDY REQUIREMENTS

All new students at Western Sydney University will undergo a period of adjustment. This includes adjusting to a new country and to new learning and teaching methods. To be successful at University, it is important that you understand what is required of you in terms of study and assessment tasks.

westernsydney.edu.au/international/studyrequirements

ADDITIONAL FEES AND COSTS

Annual tuition fees only cover the cost of your tuition. They do not include other expenses associated with university study such as accommodation, books, equipment, photocopying, printing, stationery and living expenses.

There is also a Study Services and Amenities Fee that must be paid each semester. Find out more at **westernsydney.edu.au/ssaf**

Some programs will have additional compulsory costs as a requirement for completion of units in the course.

Make sure you find out what additional costs you'll have while studying at Western Sydney University.

westernsydney.edu.au/fees

WORKING IN AUSTRALIA

As an international student, once your course starts you may work 40 hours per fortnight during semester and full time in vacations. Understand your study obligations before you commit yourself to part-time work.

You can also access information about your employment rights, conditions, and the Fair Work Ombudsman at **fairwork.gov.au/how-we-will-help/templates-and-guides/fact-sheets/rights-and-obligations/international-students**



2023 STUDY ABROAD FEES AND KEY DATES

STUDY ABROAD TUITION ONLY FEES

All campuses	Package Total**
3 unit Study Abroad Semester	\$6,930 AUD
4 unit Study Abroad Semester	\$9,240 AUD

**Excluding Student Services and Amenities Fee.
All fees are indicative and subject to change.

SEMESTER DATES

AUTUMN SEMESTER DATES

17 February 2023: International Orientation
6 March 2023: Autumn Semester Commences
19 June – 2 July 2023: Autumn Semester Exams
3 July 2023: Vacation Commences

SPRING SEMESTER DATES

7 July 2023: International Orientation
24 July 2023: Spring Semester Commences
6 November – 19 November 2023: Spring Semester Exams
20 November 2023: Vacation Commences

This dateline, approved by the University's Executive, is subject to change.

SYDNEY GRADUATE SCHOOL OF MANAGEMENT (SGSM)

Only Postgraduate Business programs are available at SGSM. Students study two subjects per Quarter (equivalent to a full study load) and combine two Quarters in order to complete the equivalent of a semester load.

Quarter 1 Study Period: 9 January – 26 March 2023
Quarter 2 Study Period: 3 April – 18 June 2023
Quarter 3 Study Period: 26 June – 10 September 2023
Quarter 4 Study Period: 18 September – 3 December 2023

westernsydney.edu.au/dates



GLOBAL SCOPE PROGRAM

A 3 week Experiential Learning Program

The Global Scope Program is an opportunity for study abroad students to build upon and value-add to their semester abroad experience at Western Sydney University. Running twice per year in February and July before the start of semester, Global Scope is a unique, focused experiential learning program in which students spend 3 weeks working in teams for a NSW Government agency, NGO or private enterprise. Students will participate in real-world business projects: they will create options to address

current business needs, meet their real-world client once a week, be mentored by industry players, enhance their business capabilities, build professional skills and expand their professional networks. This program will combine some online learning with a 2-hour workshop, 5-6 meetings with professionals (clients and industry mentors) and is managed through a world class collaborative platform called Practera. For more information, visit westernsydney.edu.au/globalscope

ACADEMIC AND ENTRY REQUIREMENTS

Academic Requirements

At the time of application, you must be on track to complete one full year or more of study at a recognised institution by the time of commencement of the study abroad program.

English Language Requirements

Study Abroad Tuition Only:

- IELTS (Academic): Overall score of 6.5, with a minimum score of 6.0 in all bands
- TOEFL (IBT): Total score 82, Writing 21, Speaking 18, Reading 13, Listening 13
- Cambridge Certificate of Advanced English: 58
- Common European Framework of Reference for Languages (CEFR): A statement on partner letterhead and signed by a staff member of authority of the partner's English language centre that the applicant has been evaluated to have a CEFR level of B2 or above.
- European senior secondary school qualifications:

→ Denmark Studentereksamen:

Minimum score of 7 in English A or 9 in English B

→ Finland Upper Secondary School Certificate:

Minimum score of 8 in English A or English (Advanced)

→ Germany Abitur:

Minimum score of 3 (7-9)/Satisfactory in Advanced Level English

→ Germany DAAD:

Minimum score of B in all 4 categories of the DAAD certificate (old), or 5 stars in each category of the DAAD certificate

→ Netherlands Voorbereidend

Wetenschappelijk Onderwijs (VWO): Minimum score of 7 in final year English

→ Norway Vitnemal:

Minimum score of 4 in English

→ Sweden Slutbetyg:

Minimum score of 4/VG in English A or B.

Study Abroad Plus English Language:

- IELTS (Academic): Overall score of 6.0, with a minimum score of 5.0 in all areas
- TOEFL (IBT): 75

ABOUT THE COLLEGE

'The College' at Western Sydney University's Sydney Olympic Park campus offers the University's English language programs. Facilities include lecture and tutorial rooms, computer labs, internet access, academic and social support services, sporting facilities, food outlets, student common room and prayer rooms. In addition to new teaching and staff facilities, the chosen site

within the Sydney Olympic Park precinct provides a vibrant environment. The location is home to high profile sport, cultural and entertainment activities, parklands, and a wide range of facilities including food outlets, retail services and accommodation (off-campus) options. Sydney Olympic Park is also well serviced by public transport including train, bus and ferry.

Where to apply: westernsydney.edu.au/studyabroad/apply

Contact information

+61 2 9685 9052
studyabroad@westernsydney.edu.au

Western Sydney University
Locked Bag 1797
Penrith NSW 2751 Australia

Western Sydney University is a registered provider under the Commonwealth Register of Institutions and Courses for Overseas Students (CRICOS). Provider number 00917K.

Western Sydney University The College (CRICOS Code 02851G) is a wholly owned entity of Western Sydney University (CRICOS Code 00917K).



facebook.com/westsyduglobal



instagram.com/wsgoglobal
#WSGoGlobal



WESTERNSYDNEY.EDU.AU