

# Dean's Report to Faculty Council

*October 8<sup>th</sup>, 2020*

J.J. MCMURTRY

liberal arts &  
professional studies | YORK 





## Agenda

- COVID-19/Budget Update
- Enrollment Update
- Research Update
- Going Digital
- Student Support
- Markham Campus
- Questions?

# COVID-19/Budget Update

## Positive trends continue but long term concerns

- Enrollments and retention continue to be strong
- Government policy has opened border to international students starting Oct. 20 if the university has a COVID-19 readiness plan in place
- Challenges with increasing COVID-19 numbers
- Decisions on the summer and fall 2021 semesters likely in February and April
- Risks of long term enrollment decline remain

# Budget Priorities

## Three key priorities

- Faculty complement renewal
- Investment in student support, recruitment, and retention
- Capital investment in our infrastructure for a return in person



## Fall 2020 FFTEs Progression to Target – September 28, 2020

		Fall 2020 Projection to Target				Fall 2020 Projection to Target %			
		Eligible	Ineligible Visa	Ineligible Other	Total	Eligible	Ineligible Visa	Ineligible Other	Total
Total Undergrad									
AMPD		(13.5)	(20.1)	(1.6)	(35.2)	(1.6%)	(9.8%)	(2.9%)	(3.1%)
Education	BEd	44.1	0.3		44.4	7.5%	116.1%		7.5%
	BA	(17.6)	2.9		(14.7)	(9.6%)			(8.1%)
FEUC		(6.2)	(1.7)		(7.9)	(2.8%)	(3.7%)		(3.0%)
Glendon		(56.0)	(17.0)		(73.0)	(8.1%)	(17.6%)		(9.3%)
Health		185.1	(13.4)		171.8	5.7%	(5.1%)		4.9%
Nursing	collab + general	(27.6)	2.2		(25.4)	(5.5%)	37.8%		(5.0%)
Lassonde	Engineering	(58.1)	(23.2)		(81.3)	(8.9%)	(20.3%)		(10.6%)
	Non-Engineering	110.9	30.8		141.7	18.6%	11.4%		16.4%
LAPS		139.2	30.1		169.3	2.4%	1.5%		2.2%
Osgoode		(3.2)	2.9		(0.3)	(0.8%)			(0.1%)
	JD/MBA	0.6			0.6	(0.8%)	38.1%		(0.1%)
Schulich	BBA/IBBA	16.5	(6.0)		10.5	2.0%	(7.4%)		1.1%
Science		46.8	(10.3)		36.5	3.4%	(3.0%)		2.1%
Total Undergrad		361.0	(22.4)	(1.6)	336.9	2.3%	(0.7%)	(2.9%)	1.7%

Total LA&PS FFTEs - 6064.38 Domestic + 2071.40 Visa = 8135.78

# Winter 2021 University-wide Year-Over-Year Applications at October 6, 2020

Term	Home Faculty	Change from LY-Application						Total	Percentage Change from LY-Application						Total
		Choice 1	Choice 2	Choice 3	Choice 4	Choice 5+	Choice Other		Choice 1	Choice 2	Choice 3	Choice 4	Choice 5+	Choice Other	
Winter	AMPD	-41	-8	-1	1	4		-45	-35.34%	-11.27%	-7.69%	14.29%	16.00%		-19.40%
	EUC	16	11			8		35							
	Education														
	Environ. Stud.	-18	-23	-1	-2	-3		-47	-100.00%	-100.00%	-100.00%	-100.00%	-100.00%		-100.00%
	Glendon	-6	-31	5	-3	-8		-43	-5.36%	-36.47%	62.50%	-75.00%	-100.00%		-19.82%
	Health	13	-19	12	-8	-3		-5	5.63%	-13.29%	92.31%	-80.00%	-14.29%		-1.20%
	LA&PS	-478	-424	14	-24	-144		-1056	-28.78%	-33.10%	10.29%	-24.49%	-44.04%		-30.15%
	Lassonde Eng.	-128	-64	16	9	14		-153	-27.47%	-26.23%	88.89%	112.50%	50.00%		-20.03%
	Schulich SB														
	Science	-79	-93	4	-5	-13		-186	-25.99%	-36.05%	18.18%	-31.25%	-30.95%		-28.97%
Winter Total		-721	-651	49	-32	-145	-1	-1501	-24.79%	-30.90%	23.22%	-22.07%	-31.94%	-100.00%	-25.76%

## Current Admission Cycle (Winter 2021)

Term	Home Faculty	TY Application Count						Total	Choice as % of Total						Total
		Choice 1	Choice 2	Choice 3	Choice 4	Choice 5+	Choice Other		Choice 1	Choice 2	Choice 3	Choice 4	Choice 5+	Choice Other	
Winter	AMPD	75	63	12	8	29		187	40.11%	33.69%	6.42%	4.28%	15.51%		100.00%
	EUC	16	11			8		35	45.71%	31.43%			22.86%		100.00%
	Education		1					1		100.00%					100.00%
	Environ. Stud.														
	Glendon	106	54	13	1			174	60.92%	31.03%	7.47%	0.57%			100.00%
	Health	244	124	25	2	18		413	59.08%	30.02%	6.05%	0.48%	4.36%		100.00%
	LA&PS	1183	857	150	74	183		2447	48.34%	35.02%	6.13%	3.02%	7.48%		100.00%
	Lassonde Eng.	338	180	34	17	42		611	55.32%	29.46%	5.56%	2.78%	6.87%		100.00%
	Schulich SB		1					1		100.00%					100.00%
	Science	225	165	26	11	29		456	49.34%	36.18%	5.70%	2.41%	6.36%		100.00%
Winter Total		2187	1456	260	113	309		4325	50.57%	33.66%	6.01%	2.61%	7.14%		100.00%

# Winter 2021 Admissions Summary - October 6, 2020

## Applications

Student type	Winter 2021 at Oct 6 2020	Winter 2020 at Oct. 6 2019	Year over Year Change-Count	Year over year Change %
All	2,447	3,503	-1,056	-30.15%
101 Domestic	6	7	-1	-14.29%
101 International	274	400	-126	-31.50%
105 Domestic	602	734	-132	-17.98%
105 International	1,565	2,362	-797	-33.74%

## Offers

Student type	Winter 2021 at Oct 6 2020	Winter 2020 at Oct. 6 2019	Year over Year Change-Count	Year over year Change %
All	1,391	2,036	-645	-31.68%
101 Domestic	3	3	0	0.00%
101 International	206	309	-103	-33.33%
105 Domestic	256	287	-31	-10.80%
105 International	926	1,437	-511	-35.56%

## Acceptances

Student type	Winter 2021 at Oct 6 2020	Winter 2020 at Oct. 6 2019	Year over Year Change-Count	Year over year Change %	Winter 2021 Target	Winter 2021 Heads to Target	Winter 2021 % of Target
All	591	898	-307	-34.19%	1220	-629	48.44%
101 Domestic	2	2	0	0.00%	60	-58	3.33%
101 International	91	132	-41	-31.06%	135	-44	67.41%
105 Domestic	105	119	-14	-11.76%	450	-345	23.33%
105 International	393	645	-252	-39.07%	575	-182	68.35%

# LA&PS Year over Year Applications By Program

Term: **Winter 2021** vs. **Winter 2020**

As of: **2020-10-06** vs. **2019-10-06**

Change In Application Count From Last Year

Subject1 Subject Desc	Change from LY-Application					Total
	Choice 1	Choice 2	Choice 3	Choice 4	Choice 5+	
Anthropology	-3	2	2		1	2
Business Economics	-29	-19	-2	-5	-11	-66
Business and Society	-1	2	12	4	-1	16
Children, Childhood and Youth	2	4	1	2		9
Classical Studies	-2	0				-2
Cognitive Science	0	-1	-5			-6
Commerce	-173	-108	-3	-3	-42	-329
Communication Studies	-22	-4	-5	-9	-5	-45
Criminology	3	-1			-1	1
Culture and Expression	-1	-2				-3
Disaster and Emergency Management	-4	1	1	1		-1

Current Application Count

Subject1 Subject Desc	TY Application Count					Total
	Choice 1	Choice 2	Choice 3	Choice 4	Choice 5+	
Anthropology	2	6	2		1	11
Business Economics	100	94	10	10	21	235
Business and Society	81	66	19	8	16	190
Children, Childhood and Youth	3	5	1	2		11
Classical Studies		2				2
Cognitive Science	13	10				23
Commerce	360	184	21	21	42	628
Communication Studies	51	39	4		11	105
Criminology	3	1				4
Culture and Expression	2	1				3
Disaster and Emergency Management	7	3	1	2		13



# LA&PS Year over Year Applications By Program

Term: **Winter 2021** vs. **Winter 2020**

As of: **2020-10-06** vs. **2019-10-06**

Change In Application Count From Last Year

East Asian Studies	0	-1			0	-1
Economics	-67	-97	-8	-7	-22	-201
English	3	-13	0	-1	-2	-13
English and Professional Writing	-5	3	-1		-1	-4
Financial and Business Economics	-28	-28	6	0	-15	-65
French Studies	-3	-4				-7
Gender and Women's Studies	0	0	1			1
Geography	-1	-2			-1	-4
Geography and Urban Studies	-4	-5	-1		0	-10
Global Political Studies	2	-6	3	-1		-2
Health and Society	5	0	2		-2	5
Hellenic Studies	1	-1				0
History	-6	-9	2	1	-2	-14
Human Resources Management	-15	-13	1	-3	-24	-54

Current Application Count

East Asian Studies	4	2			2	8
Economics	102	99	12	8	27	248
English	21	5	1		1	28
English and Professional Writing	5	8				13
Financial and Business Economics	75	71	18	9	22	195
French Studies	2	1				3
Gender and Women's Studies	3	4	2			9
Geography						
Geography and Urban Studies					1	1
Global Political Studies	9	3	4			16
Health and Society	10	9	2			21
Hellenic Studies	2					2
History	13	7	2	1		23
Human Resources Management	42	28	11	5	11	97

# LA&PS Year over Year Applications By Program

Term: **Winter 2021** vs. **Winter 2020**

As of: **2020-10-06** vs. **2019-10-06**

Change In Application Count From Last Year

Human Rights and Equity Studies	-9	-4	2			-11
Humanities	-3	1	-1		0	-3
Indigenous Studies	0	-3				-3
Individualized Studies	1					1
Information Technology	-33	-21	1	-3	-9	-65
Interdisciplinary Social Science	0	2	1		2	5
International Development Studies	-3	-4	-2	-1	-2	-12
Italian Studies	-1	1				0
Jewish Studies		-1				-1
Law and Society	-17	1	1	-1	-1	-17
Linguistics	1	0	-1			0
Philosophy	-4	0	1		1	-2
Political Science	-11	-8	1	1	2	-15

Current Application Count

Human Rights and Equity Studies	7	5	2			14
Humanities	5	7	1		1	14
Indigenous Studies	1					1
Individualized Studies	1					1
Information Technology	80	63	7		6	156
Interdisciplinary Social Science	6	5	1		2	14
International Development Studies	8	8	1	1		18
Italian Studies		1				1
Jewish Studies						
Law and Society	22	21	4		3	50
Linguistics	9	1				10
Philosophy	5	8	1		1	15
Political Science	14	14	3	2	2	35

# LA&PS Year over Year Applications By Program

Term: **Winter 2021** vs. **Winter 2020**

As of: **2020-10-06** vs. **2019-10-06**

Change In Application Count From Last Year

Professional Writing	-1	0				-1
Public Administration	1	-4	-2		0	-5
Religious Studies	-1	-2	1			-2
Sexuality Studies	0	-1				-1
Sociology	-1	-16	5	0	0	-12
Spanish	-1	-3				-4
Undecided Major	-24	-59	1	0	-8	-90
Urban Studies	0	-2	0		0	-2
Work and Labour Studies	2	1		1	-1	3
{To Be Announced}	-26					-26
	-478	-424	14	-24	-144	-1056

Current Application Count

Professional Writing		2				2
Public Administration	7	5			2	14
Religious Studies			1			1
Sexuality Studies	1	2				3
Sociology	16	17	9	2	5	49
Spanish		1				1
Undecided Major	41	42	9	2	3	97
Urban Studies	6	4	1		3	14
Work and Labour Studies	3	3		1		7
{To Be Announced}	41					41
	1183	857	150	74	183	2447

# Research Achievements 2019-20

## > Tri-Agency Results (LA&PS), 2019-20 FY

- SSHRC: \$3,705,207
- NSERC: \$660,000
- CIHR: \$1,114,160
- CRC: \$600,000 (embargoed)
- **Total Tri-Agency (FY 2019-20): \$5,479,667**

## > Non Tri-Agency Funding (LA&PS), 2019-20 FY

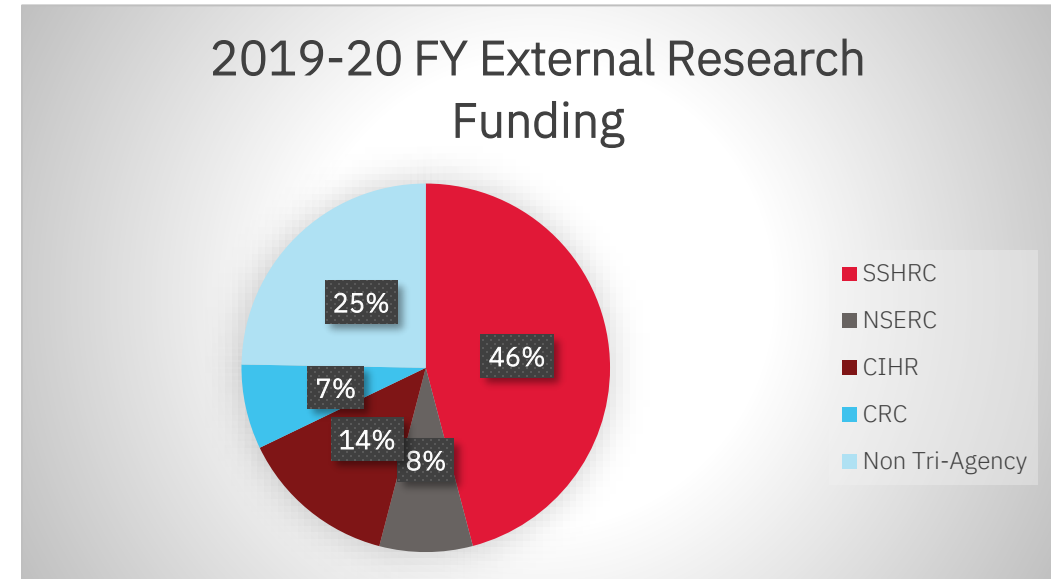
- \$1,995,406

## > Dean's Award for Research Excellence (DARE)

- Awarded 100% of project application (48).
- Online Celebration of student projects and research posters planned for **Nov. 16, 2021**

## > Research Chairs and Fellowships

- Fellows of the Royal Society of Canada (FRSC): **Molly Ladd-Taylor** (History) and **William Wicken** (History)
- York Research Chair (Tier 2) in Linguistic Diversity and Community Vitality, **Eve Haque** (DLLL)
- Canada Research Chairs: 4 submitted, 1 awarded (\$600,000, embargoed), 3 under review (December)



# Going Digital

## Supports for Faculty, Staff and Faculty

- [Going Digital](#)



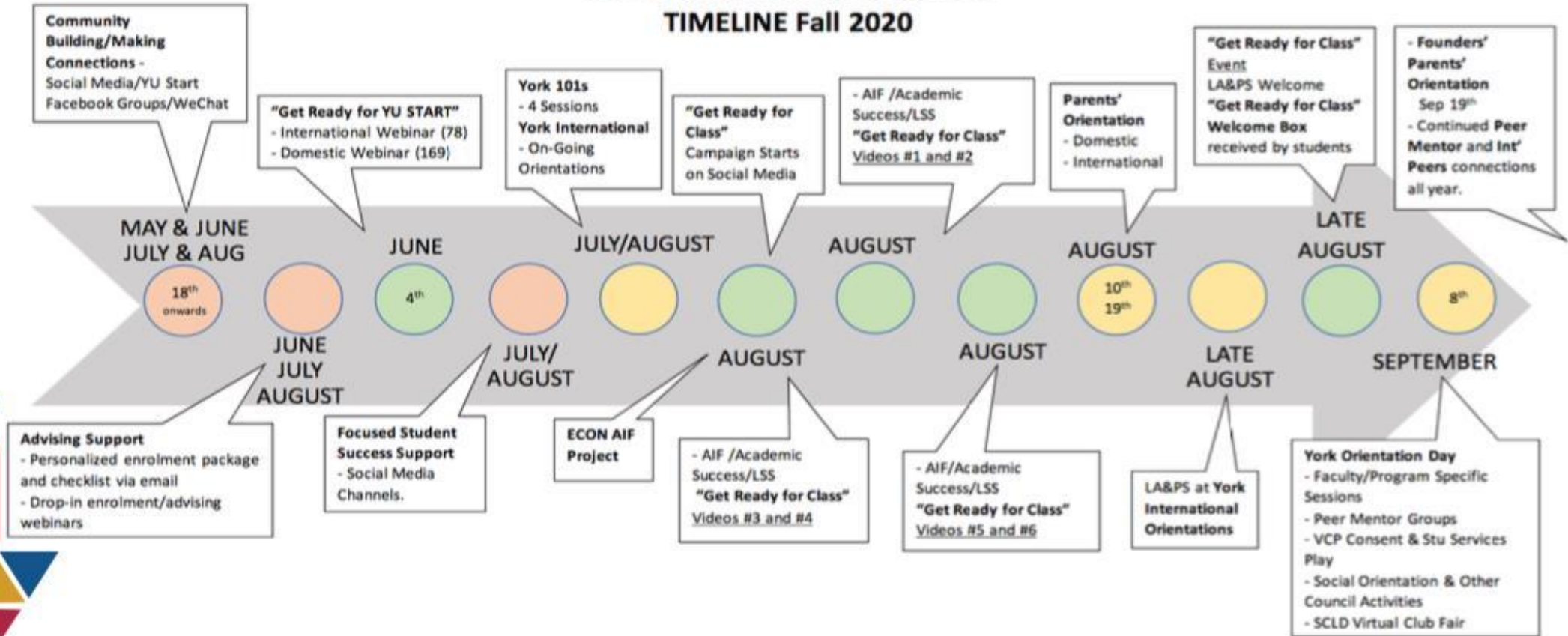
Welcome to LA&PS Going Digital website! On these webpages, we've prepared an assortment of resources to assist faculty members, students, and staff as we navigate through a time of change at York University. With many of our services transitioning to the digital format, members of the LA&PS community can find the information and materials they need by exploring the links below. Please check back often, as additional resources will be added as they become available.



# Student Supports

## The Faculty of Liberal Arts & Professional Studies Summer Transition Events at a Glance

### LA&PS New Student Transition TIMELINE Fall 2020



## Student Supports

# ENROLMENT & ADVISING



**4,657** INCOMING LA&PS  
STUDENTS



**856**

STUDENTS JOINED THEIR  
INCOMING COLLEGE  
FACEBOOK GROUP



**4,402**

ENROLMENT  
APPOINTMENTS



**334**

TRANSFER CREDIT  
WEBINAR ATTENDEES



**103**

YU START WEDNESDAY  
& FRIDAY ATTENDEES



**137**

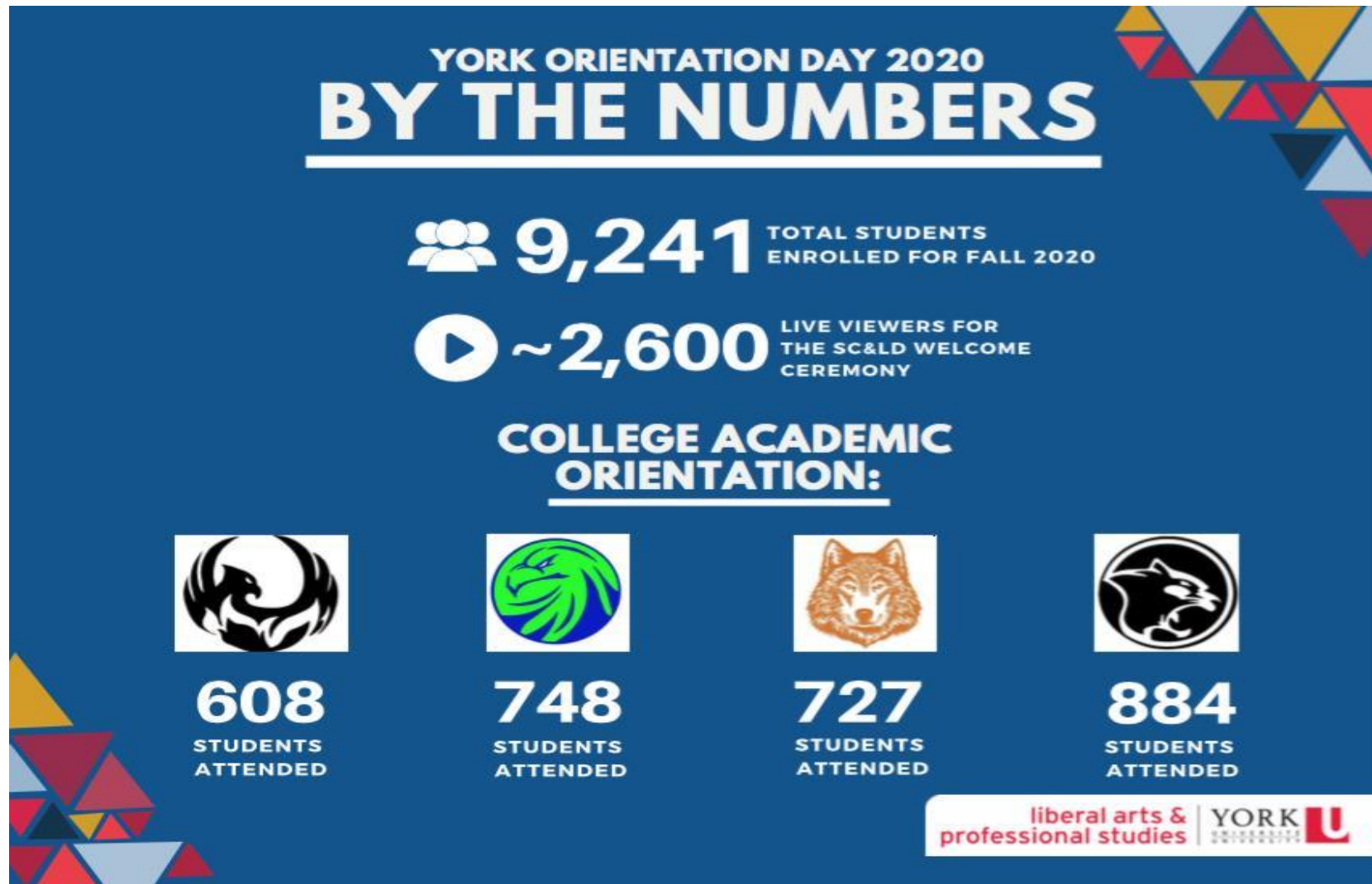
CALLS MADE TO 101  
STUDENTS FOR YU  
START CALL CAMPAIGN

# Student Supports





# Student Orientation



# Markham Campus

YORK 

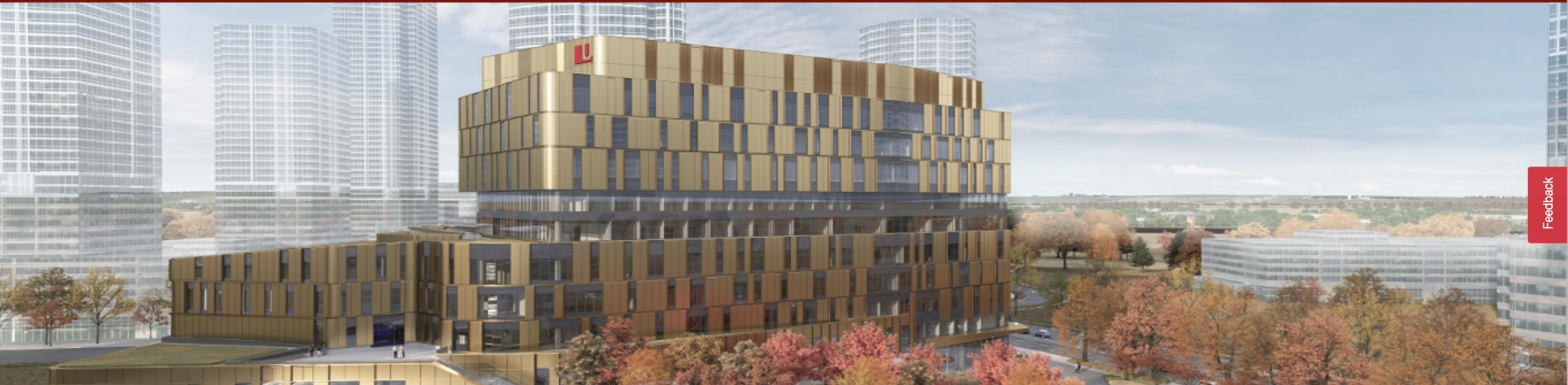
Popular Links ▾



Markham Centre Campus

Partners & Innovation Community Benefits

APPLY CONTACT



Feedback

## Discover

### York University's Bold Dream is Becoming an Exciting Reality Opening Fall 2023

York University is moving forward with construction of its long-awaited Markham Centre Campus (MCC) to welcome our first students in the Fall of 2023. Once open, the new campus will create positive change in the York Region and City of Markham community, accommodating up to 4,200 students in Phase 1, with the flexibility to respond to future growth demands.



# Questions?

Reach us as [lapsdo@yorku.ca](mailto:lapsdo@yorku.ca)

---

liberal arts &  
professional studies | YORK 

