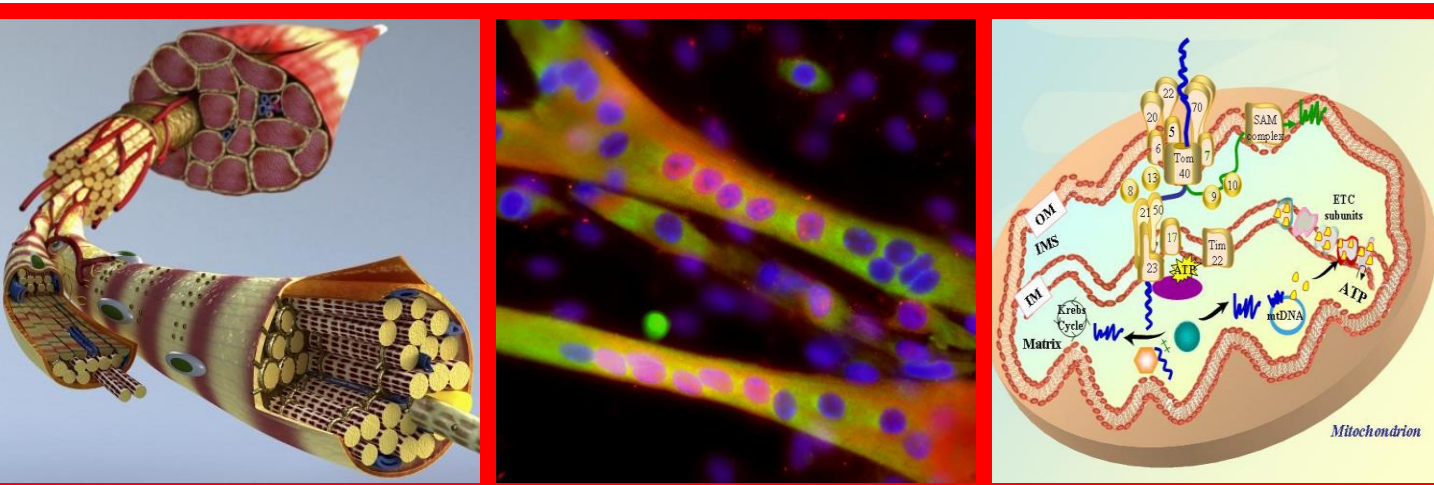


The Muscle Health Research Centre (MHRC) *Colloquium Series*



Dr. Mazen Hamadeh, Associate Professor , School of Kinesiology & Health Science

Title: "Nutrition interventions in a mouse model of amyotrophic lateral sclerosis".

Dr. Robert Tsushima, Associate Professor, Department of Biology

Title: "Protecting the Heart from Ischemic Injury"

Location: CSE-B

Date: Wed. Oct. 13, 2010 at 3:30 pm

All are welcome

Refreshments will be served