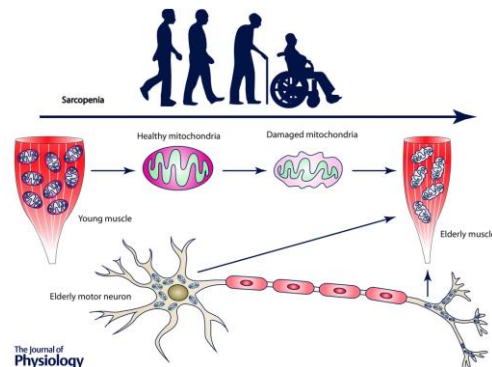
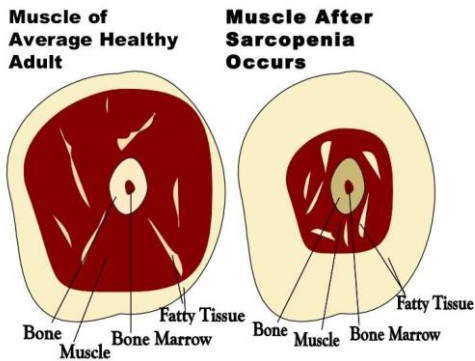


## *Seminar Series*



## **Dr. Susan Brooks**

University of Michigan, Christin Carter-Su Collegiate  
Professor of Physiology

Molecular and Integrative Physiology, Biomedical Engineering

### **Presentation Title:**

The contribution of both pre- and post-synaptic changes in the initiation and progression of sarcopenia

**Online via Zoom**

**Date: Friday February 12, 2021 at 3:00pm**

**All are welcome!**

For updates and more  
information, please visit:



[mhrc.info.yorku.ca](http://mhrc.info.yorku.ca)



[facebook.com/MuscleHealthResearchCentre](https://facebook.com/MuscleHealthResearchCentre)



@MHRC\_YorkU