

Introduction to TIEDI

Dr Philip Kelly
Principal Investigator, TIEDI
Associate Professor, Department of Geography, York University

Metropolis Conference
March 1, 2012



License:

- There is no cost to use the figures included in this file. We ask however that you acknowledge TIEDI and use the figures for non-commercial purposes only.
- For comments or questions, contact the TIEDI Principal Investigator, Dr Philip Kelly (pfkelly@yorku.ca), or the TIEDI Project Coordinator, Stella Park (pstella@yorku.ca).



What is TIEDI?



Social Sciences and Humanities
Research Council of Canada

Conseil de recherches en
sciences humaines du Canada

Canada

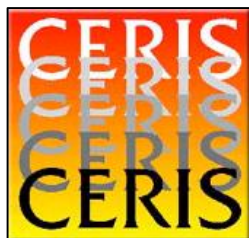
+



+



+



=





OCCASI
Ontario Council of Agencies Serving Immigrants



TRIEC

Toronto Region Immigrant
Employment Council



World Education Services

What is TIEDI?



Social Sciences and Humanities
Research Council of Canada

Conseil de recherches en
sciences humaines du Canada

Canada

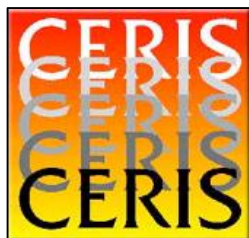
+



+



+



=



TIEDI Output: Analytical Reports (~30)



TIEDI
Toronto Immigrant Employment
DATA INITIATIVE

YORK
UNIVERSITÉ
UNIVERSITY
redefine THE POSSIBLE.

TORONTO IMMIGRANT EMPLOYMENT DATA INITIATIVE

Home
What is TIEDI ?
The TIEDI team
Events
Publications
Reports
Fact sheets
Labour Force Update
Newsletter
How to participate
Media room
Contact

TIEDI Analytical Report 23- August 2011

Language Use in the Workplace for Immigrants in Toronto: Which groups are most likely to use a non-official language at work and how is this reflected in labour market outcomes? What are the effects of using a non-official language at work on income?

by Lucia Lo, Jeanette Chua, Stella Park, Philip Kelly

- [Graphs](#) (PPT)

OMNI TV News- Interview with Lucia Lo, August 23, 2011.

LATEST NEWS

TIEDI Forum- Fri, October 7, 2011

8am-12:30pm in Osgoode Professional Development Centre

[Click here for more information](#)

and

New Report 26! [How Profile of Provincial Nominee Program \(PNP\) Immigrants to Canada, 1996-2009](#)

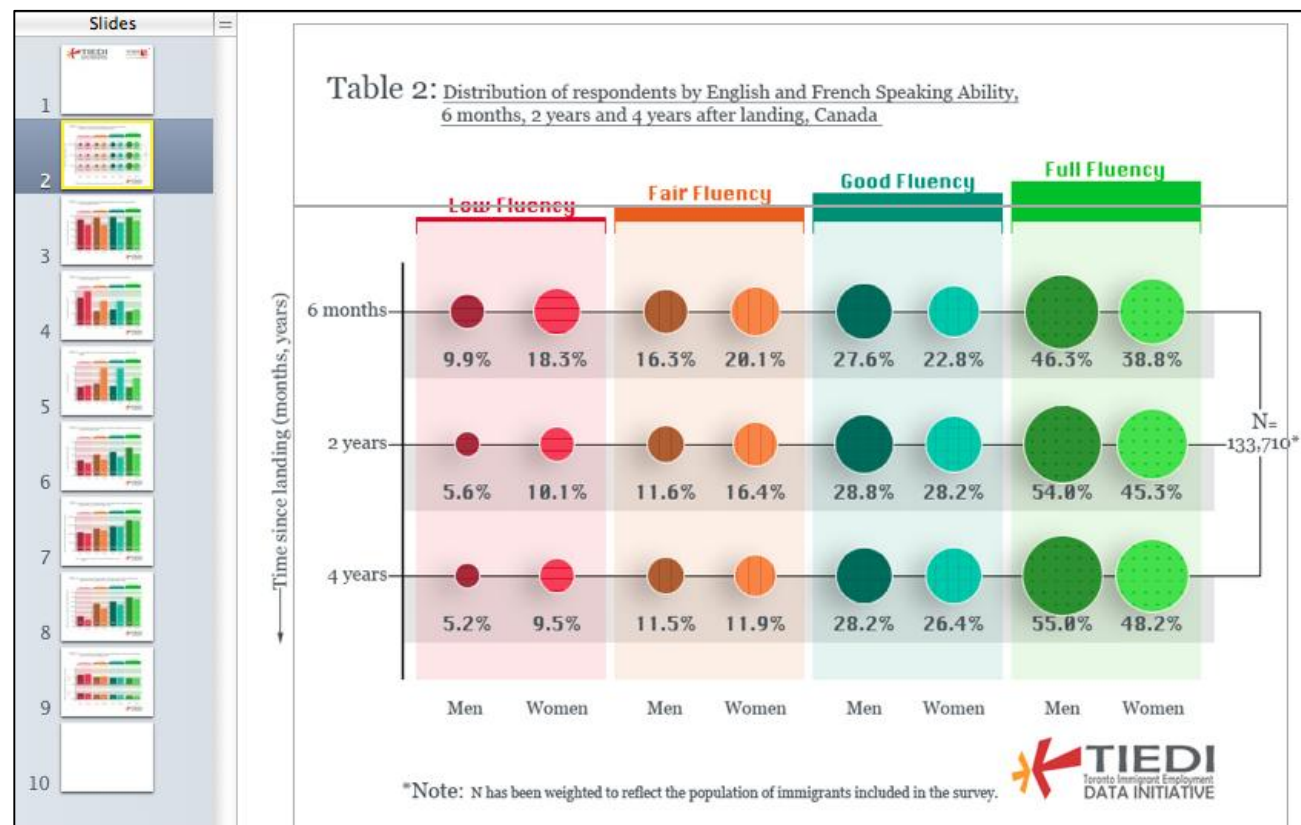
NEWSLETTER SIGN-UP

Enter your e-mail address to receive TIEDI announcements or join the TIEDI LISTSERV

Go!

LUCIA LO
PRINCIPAL AUTHOR

Powerpoint slides/notes



TIEDI Output: Rapid Data / Factsheets

March 2011

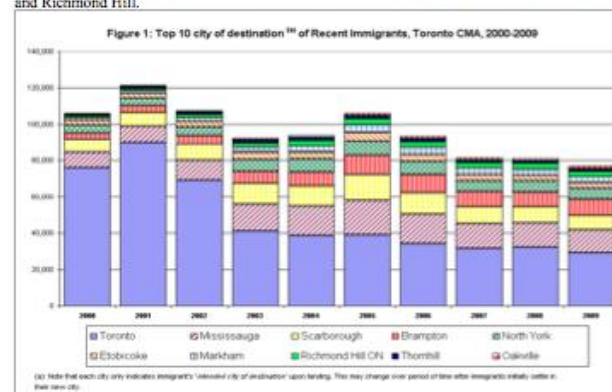
QUESTIONS:

1. Where do recent immigrants settle in Toronto CMA? What are the top 10 cities of destination for recent immigrants?
2. What is the category of immigrants landing in Toronto CMA? Has there been change in the type of immigrants arriving to Toronto?

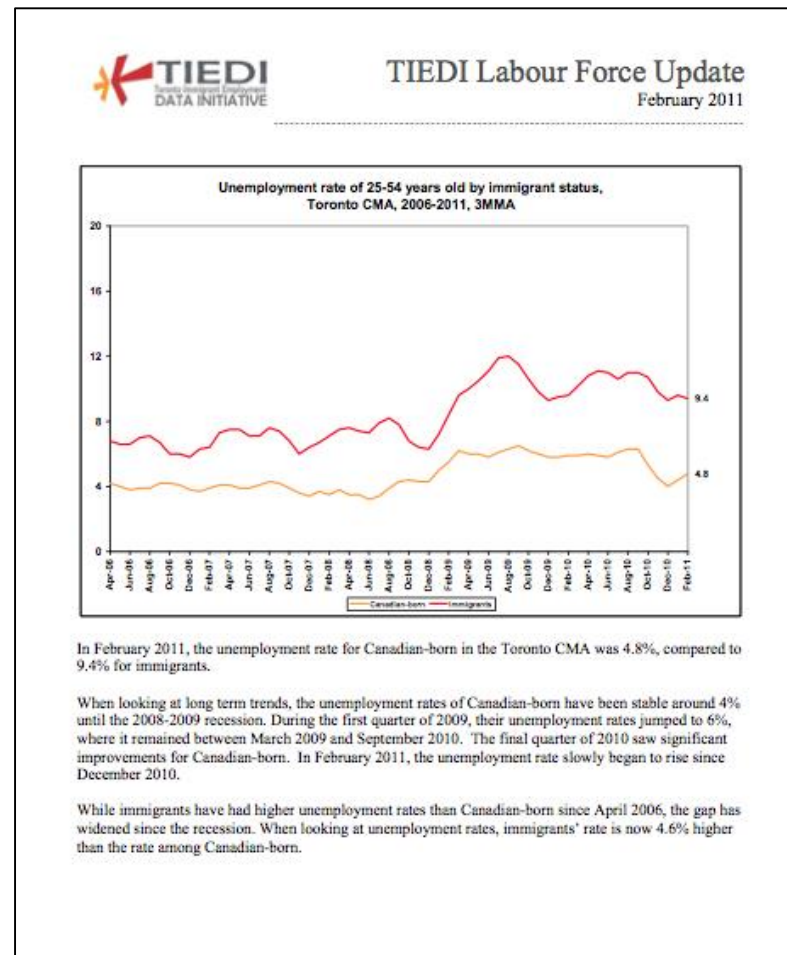
ANSWERS:

1. Immigrants were asked on arrival to Canada what was their *intended city of destination*. Therefore, data do not take into account secondary migration to or from cities.

Figure 1 below shows that majority of recent immigrants, arriving between 2000-2009, have indicated Toronto as their top city of destination when they land in Toronto CMA. The next three popular cities of destination include Mississauga, Scarborough and Brampton. However, the figure below also shows that the number of immigrants arriving in Toronto has decreased since 2000 as more immigrants have recently indicated other intended destinations such as Etobicoke and Richmond Hill.



TIEDI Output: Labour Force Update



Datasets used:

- **Census, 2006**
- **Ethnic Diversity Survey (EDS), 2002**
- **International Adult Literacy and Skills Survey (IALSS), 2003**
- **Longitudinal Survey of Immigrants to Canada (LSIC), 2001-2004**
- **Workplace and Employee Survey (WES), 1999-2005**
- **Labour Force Survey (LFS), Monthly, 2006-current**
- **Permanent Resident Data System (PRDS), 1980-2009**



www.yorku.ca/tiedi